

WAAS CH 82103 W28A	APP CRS 280°	Rwy Idg TDZE Apt Elev	6600 598 606
--	------------------------	-----------------------------	---

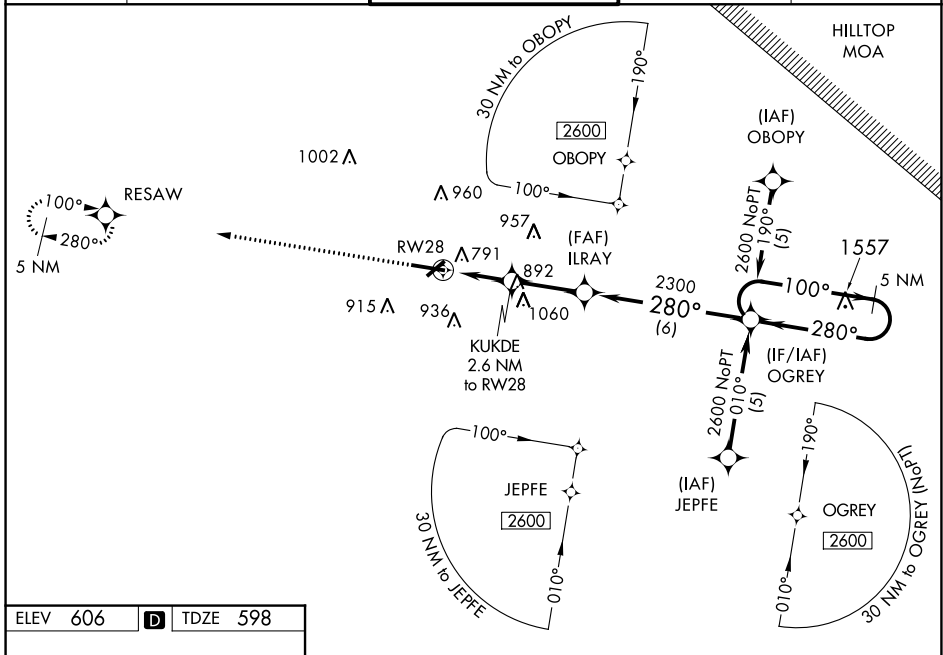
RNAV (GPS) RWY 28

PURDUE UNIVERSITY (LAF)

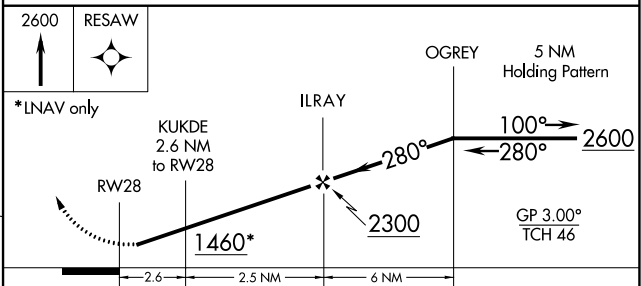
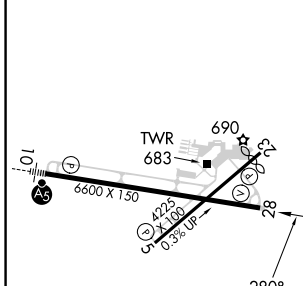
▼ When local altimeter setting not received, use Vermilion Rgnl altimeter setting: increase LPV DA to 945 feet; increase LNAV/VNAV DA to 1214 feet; increase all MDAs 100 feet and LNAV Cats C/D visibility ¼ SM and Circling Cat C visibility ½ SM, Cat D visibility ¼ SM. Baro-VNAV NA when using Vermilion Rgnl altimeter setting. For uncompensated Baro-VNAV systems, LNAV/VNAV NA below -1.6°C (4°F) or above 47°C (116°F).
▲ DME/DME RNP-0.3 NA. Rwy 28 helicopter visibility reduction below ¾ SM NA. Circling Rwy 23 NA at night.

MISSED APPROACH: Climb to 2600 direct RESAW and hold.

ATIS 127.75	GRISSOM APP CON ★ 123.85 291.675	LAFAYETTE TOWER ★ 119.6 (CTAF) 343.625	GND CON 121.9 343.625	UNICOM 122.95
-----------------------	--	--	---------------------------------	-------------------------



ELEV 606	D	TDZE 598
----------	----------	----------



CATEGORY	A	B	C	D
LPV DA		856-1	258 (300-1)	
LNAV/VNAV DA		1125-1¾	527 (600-1¾)	
LNAV MDA	1060-1	462 (500-1)	1060-1¾	462 (500-1¾)
CIRCLING	1160-1	554 (600-1)	1320-2 714 (800-2)	1420-2¾ 814 (900-2¾)

HIRL Rwy 10-28
 REIL Rwys 5, 23 and 28
 MIRL Rwy 5-23

EC-2, 26 DEC 2024 to 23 JAN 2025

EC-2, 26 DEC 2024 to 23 JAN 2025