

WAAS CH <b>97613</b> <b>W08A</b>	APP CRS <b>081°</b>	Rwy Idg <b>6849</b> TDZE <b>4229</b> Apt Elev <b>4229</b>
--	------------------------	---

# RNAV (GPS) RWY 8

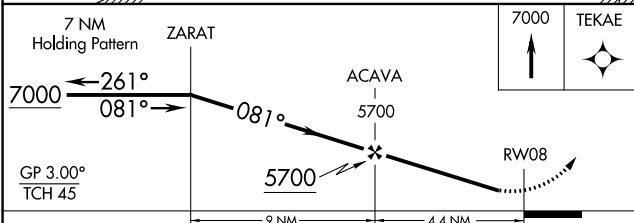
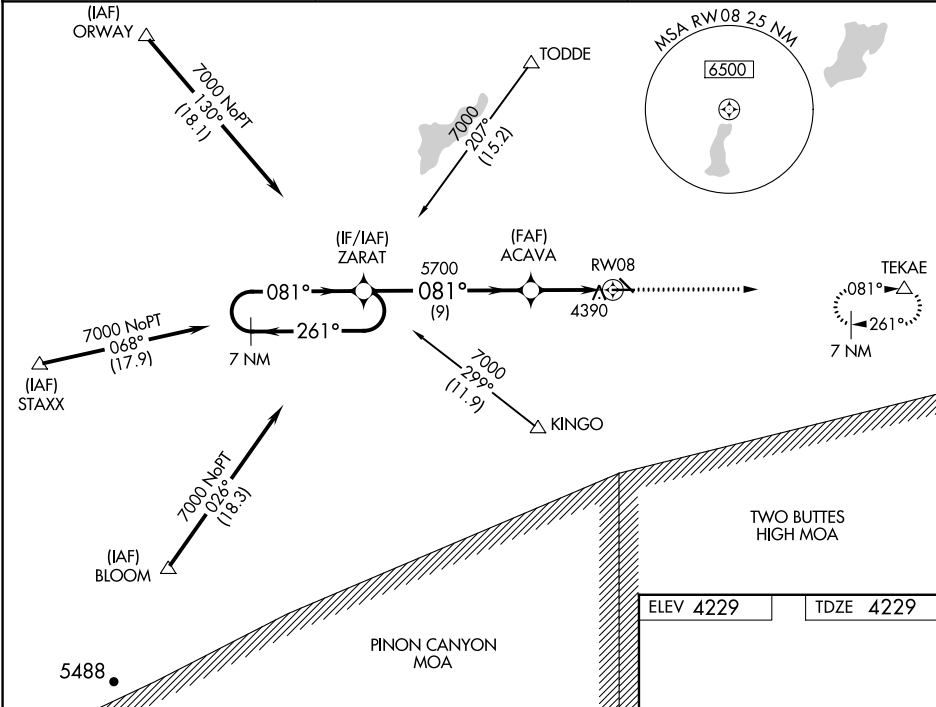
LA JUNTA MUNI (LHX)

RNP APCH - GPS

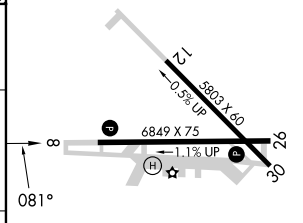
Baro-VNAV NA when using Lamar altimeter setting. For uncompensated Baro-VNAV systems, LNAV/VNAV NA below -23°C or above 40°C. When local altimeter setting not received, use Lamar altimeter setting; increase LPV DA to 4694 feet and all visibilities ½ SM; increase LNAV/VNAV DA to 4904 feet and all visibilities ½ SM; increase all MDAs 180 feet and visibility LNAV Cats C and D ½ SM and Circling Cat C ½ SM and Cat D ¾ SM. Circling Rwy 12, 30 NA at night.

MISSED APPROACH:  
Climb to 7000 direct  
TEKAE and hold.

ASOS <b>135.525</b>	DENVER CENTER <b>128.375 379.95</b>	UNICOM <b>123.0 (CTAF)</b>
------------------------	--	-------------------------------



ELEV 4229	TDZE 4229
-----------	-----------



CATEGORY	A	B	C	D
LPV DA	4528-7/8		299 (300-7/8)	
LNAV/VNAV DA	4738-13/8		509 (600-13/8)	
LNAV MDA	4700-1 471 (500-1)		4700-13/8 471 (500-13/8)	
CIRCLING	4740-1 511 (600-1)		4740-1 1/2 511 (600-1 1/2) 4860-2 631 (700-2)	

REIL Rwy 8 and 26  
MIRL Rwy 8-26

SW-1, 26 DEC 2024 to 23 JAN 2025

SW-1, 26 DEC 2024 to 23 JAN 2025