

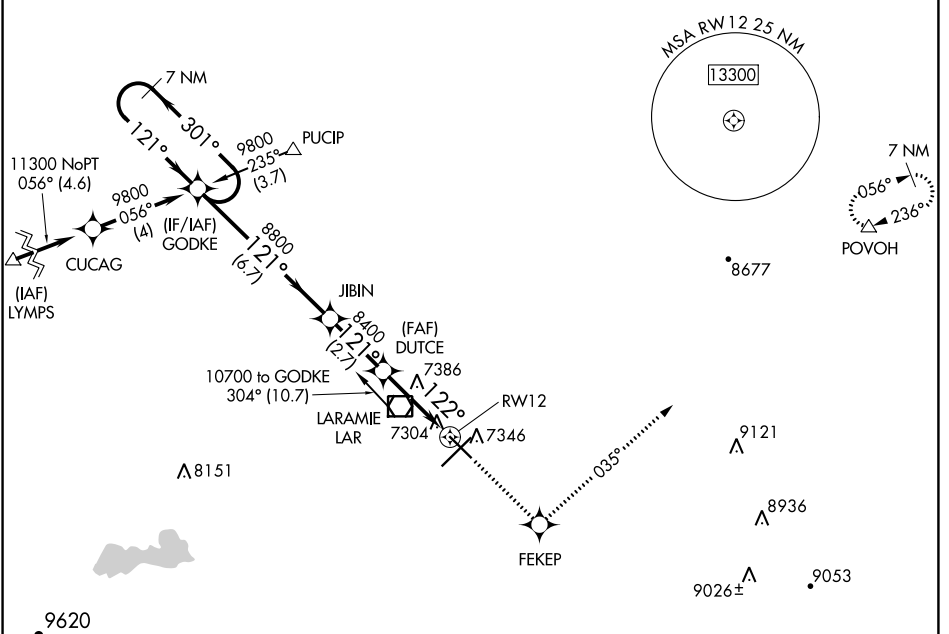
WAAS CH 70600 W12A	APP CRS 122°	Rwy Idg TDZE Apt Elev 6301 7275 7284
--	------------------------	--

RNAV (GPS) RWY 12

LARAMIE RGNL (LAR)

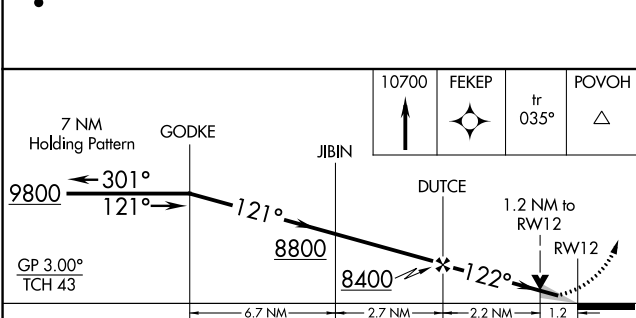
RNP APCH-GPS.	MISSED APPROACH: Climb to 10700 direct FEKEP and via 035° track to POVOH and hold.
▼ For uncompensated Baro-VNAV systems, LNAV/VNAV NA below -29°C or above 34°C.	

ASOS 135.475	DENVER CENTER 125.9 284.7	UNICOM 123.05 (CTAF) 0
------------------------	-------------------------------------	----------------------------------

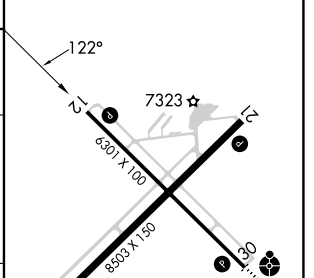


NW-1, 26 DEC 2024 to 23 JAN 2025

NW-1, 26 DEC 2024 to 23 JAN 2025



ELEV 7284	TDZE 7275
-----------	-----------



CATEGORY	A	B	C	D
LPV DA		7525-3/4	250 (300-3/4)	
LNAV/VNAV DA		7622-1	347 (400-1)	
LNAV MDA	7700-1	425 (500-1)	7700-1 1/4	425 (500-1 1/4)
CIRCLING	7700-1 416 (500-1)	7760-1 476 (500-1)	7880-1 1/2 596 (600-1 1/2)	7920-2 636 (700-2)

REIL Rwy 3, 12 and 21 0
MIRL Rwy 3-21 and 12-30 0