

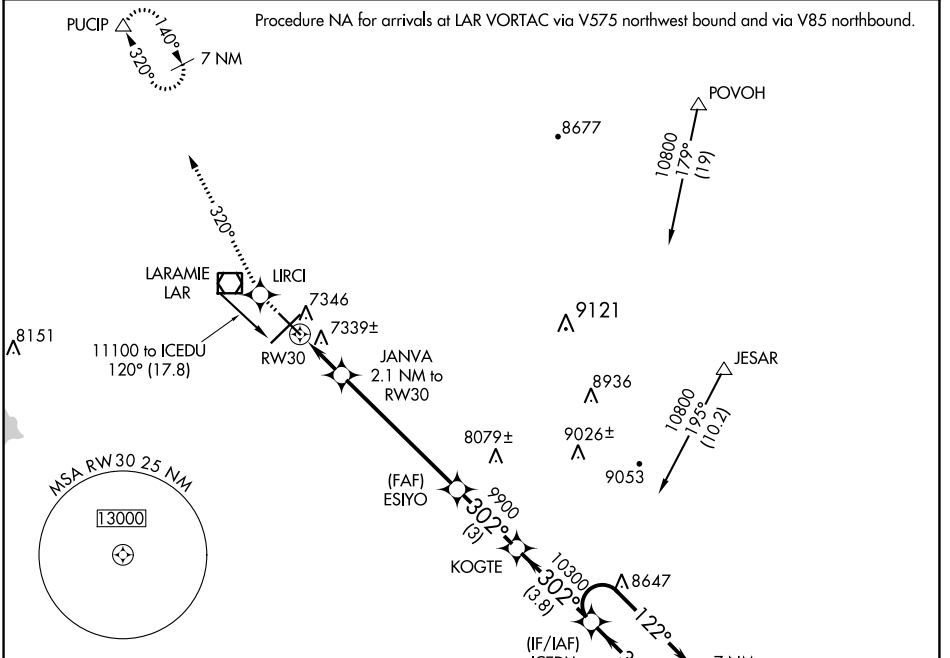
WAAS CH <b>53600</b> W30A	APP CRS <b>302°</b>	Rwy Idg TDZE Apt Elev <b>6301</b> <b>7278</b> <b>7284</b>
---------------------------------	------------------------	--

# RNAV (GPS) RWY 30

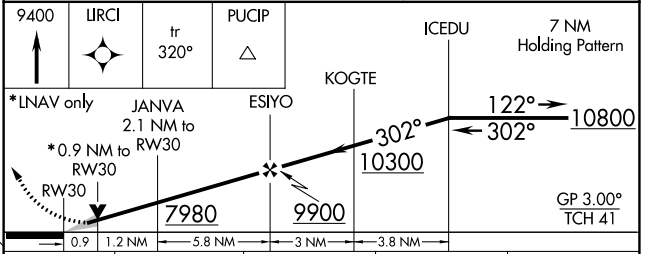
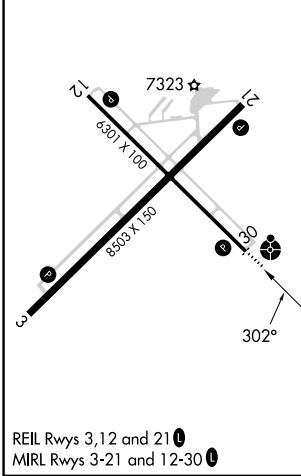
LARAMIE RGNL (L.A.R.)

<p><b>▽</b> Inop table does not apply. DME/DME RNP-0.3 NA. For uncompensated Baro-VNAV systems, LNAV/VNAV NA below -29°C (-20°F) or above 35°C (95°F).</p>	<p><b>ODALS</b></p>	<p>MISSED APPROACH: Climb to 9400 direct LIRCI and via 320° track to PUCIP and hold.</p>
--	---------------------	--

<p>ASOS <b>135.475</b></p>	<p>DENVER CENTER <b>125.9 284.7</b></p>	<p>UNICOM <b>123.05</b> (CTAF) <b>0</b></p>
--------------------------------	---	---



ELEV 7284	<b>D</b>	TDZE 7278
-----------	----------	-----------



CATEGORY	A	B	C	D
LPV DA	7528-1 250 (300-1)			
LNAV/VNAV DA	7629-1¼ 351 (400-1¼)			
LNAV MDA	7600-1 322 (400-1)			
CIRCLING	7660-1¼ 376 (400-1¼)	7760-1¼ 476 (500-1¼)	7880-1½ 596 (600-1½)	7920-2 636 (700-2)

NW-1, 26 DEC 2024 to 23 JAN 2025

NW-1, 26 DEC 2024 to 23 JAN 2025