


LOC/DME I-LRD 111.9 Chan 56	APP CRS 178°	Rwy Idg 8743 8236	18R 504 499	18L 508 508
		TDZE 508		
		Apt Elev 508		

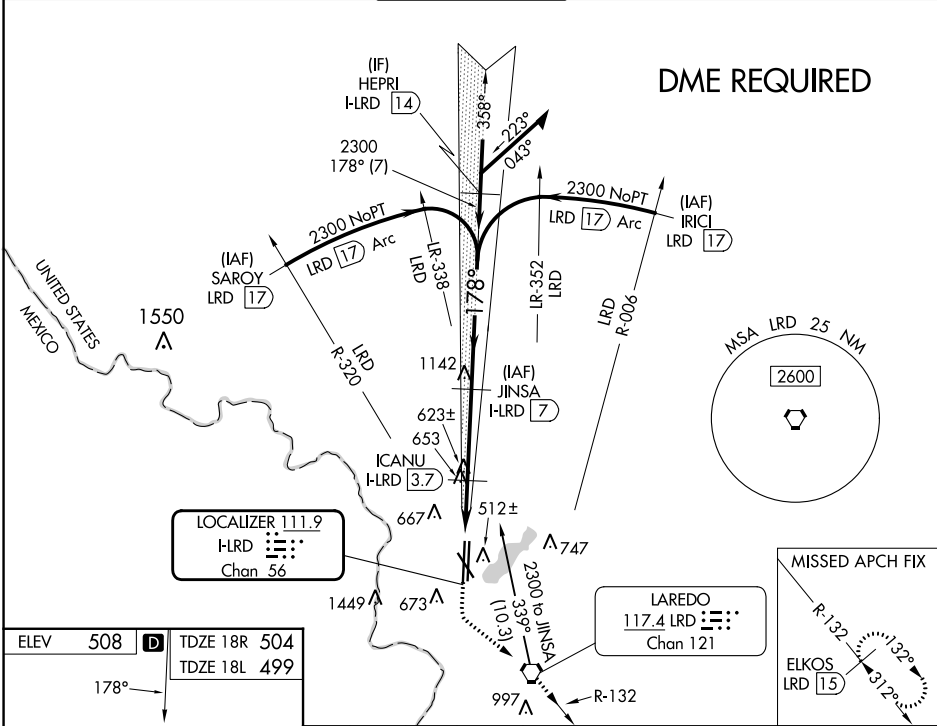
ILS or LOC RWY 18R

LAREDO INTL (L.R.D)

⚠ Circling NA west of Rwy 14 and 36L.
⚠ DME required.
 For inop ALS, increase S-ILS 18R Cat E visibility to ¾ SM and increase S-LOC 18R Cat C/D/E visibility to 1½ SM.

MALSR

MISSED APPROACH: Climb to 1100 then climbing left turn to 2500 direct LRD VORTAC and on LRD VORTAC R-132 to ELKOS/LRD 15 DME and hold.

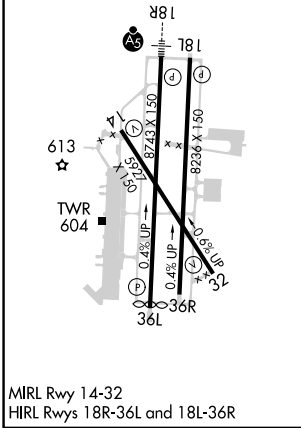
ATIS 125.775	HOUSTON CENTER 127.8 307.2	LAREDO TOWER ★ 120.1(CTAF) 0 257.9	GND CON 121.8	UNICOM 122.95
------------------------	--------------------------------------	--	-------------------------	-------------------------



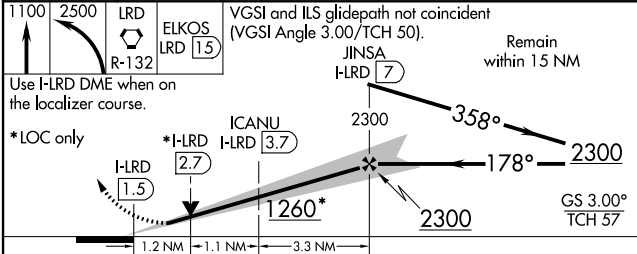
SC-3, 26 DEC 2024 to 23 JAN 2025

SC-3, 26 DEC 2024 to 23 JAN 2025

ELEV 508	D	TDZE 18R 504	TDZE 18L 499
178°			



MIRL Rwy 14-32
 HIRL Rwy 18R-36L and 18L-36R



CATEGORY	A	B	C	D	E
S-ILS 18R	704-½ 200 (200-½)				
S-LOC 18R	920-½	416 (500-½)	920-¾	416 (500-¾)	
SIDESTEP 18L	920-1	421 (500-1)	920-1½	920-2	421 (500-2)
			421 (500-1½)		
C CIRCLING	940-1	980-1	1100-1½	1200-2¼	1200-2½
	432 (500-1)	472 (500-1)	592 (600-1½)	692 (700-2¼)	692 (700-2½)