

WAAS CH 86633 W32A	APP CRS 322°	Rwy Idg TDZE 494 Apt Elev 508	5927
--	------------------------	---	-------------

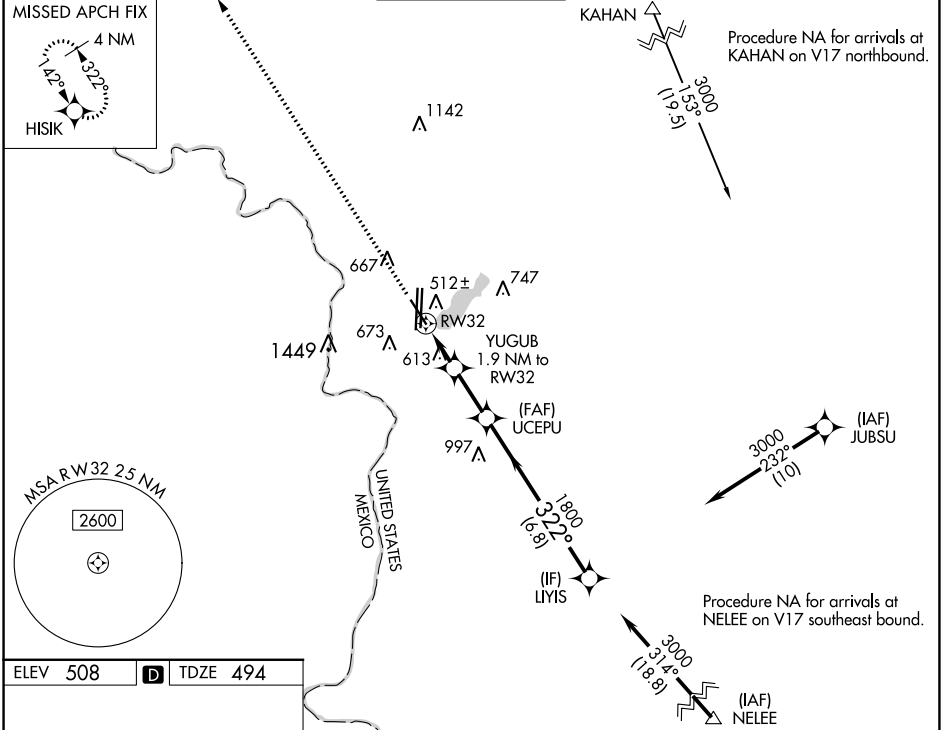
RNAV (GPS) RWY 32

LAREDO INTL (L.R.D)

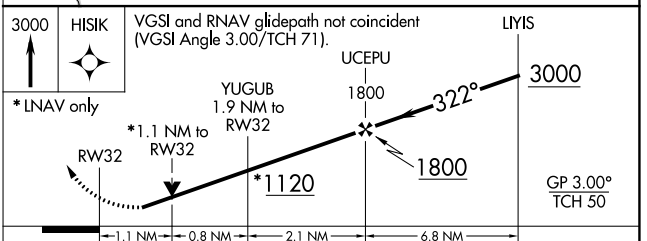
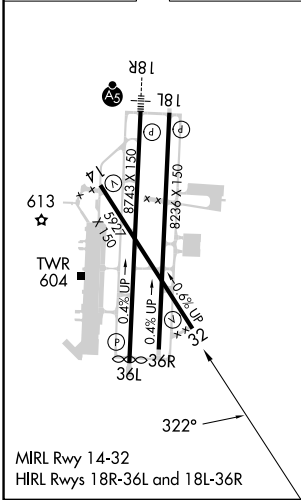
⚠ For uncompensated Baro-VNAV systems, LNAV/VNAV NA below 1°C (34°F) or above 54°C (130°F). Circling NA west of Rwy 14 and 36L. Rwy 32 helicopter visibility reduction below 3/4 SM NA. DME/DME RNP-0.3 NA.

MISSED APPROACH: Climb to 3000 direct HISIK and hold.

ATIS 125.775	HOUSTON CENTER 127.8 307.2	LAREDO TOWER ★ 120.1(CTAF) 257.9	GND CON 121.8	UNICOM 122.95
------------------------	--------------------------------------	--	-------------------------	-------------------------



ELEV 508	D	TDZE 494
-----------------	----------	-----------------



CATEGORY	A	B	C	D	E
LPV DA		744-3/4	250 (300-3/4)		
LNAV/VNAV DA		826-1	332 (400-1)		
LNAV MDA	880-1	386 (400-1)	880-1 1/8	386 (400-1 1/8)	
C CIRCLING	940-1 432 (500-1)	980-1 472 (500-1)	1100-1 1/2 592 (600-1 1/2)	1200-2 1/4 692 (700-2 1/4)	1200-2 1/2 692 (700-2 1/2)

SC-3, 26 DEC 2024 to 23 JAN 2025

SC-3, 26 DEC 2024 to 23 JAN 2025