

VORTAC LRD 117.4 Chan 121	APP CRS 139°	Rwy Idg TDZE Apt Elev 5927 508 508
---	------------------------	--

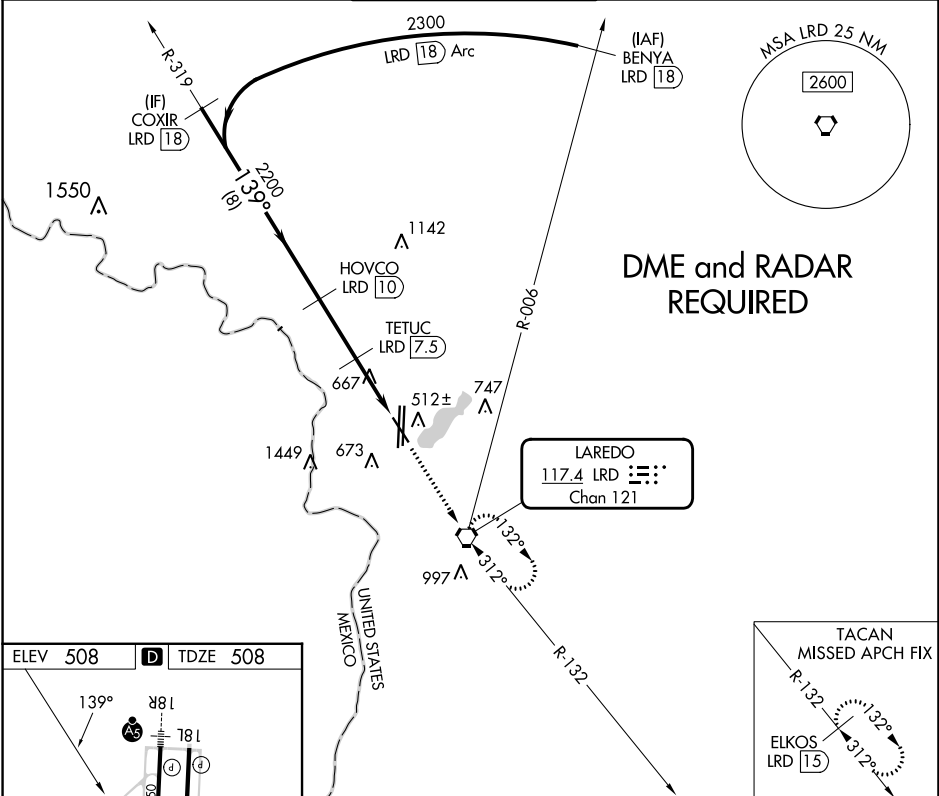
VOR or TACAN RWY 14

LAREDO INTL (LRD)

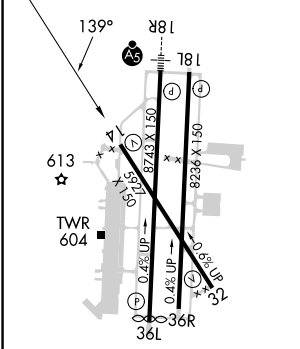
⚠ Circling NA west of Rwy 14 and 36L. DME required.

MISSED APPROACH: Climb to 2500 direct LRD VORTAC and hold, continue climb-in-hold to 2500 (TACAN aircraft continue on LRD VORTAC R-132 to ELKOS/15 DME and hold SE, 312° inbound).

ATIS 125.775	HOUSTON CENTER 127.8 307.2	LAREDO TOWER ★ 120.1 (CTAF) 0 257.9	GND CON 121.8	UNICOM 122.95
------------------------	--------------------------------------	---	-------------------------	-------------------------



ELEV 508	D	TDZE 508
----------	----------	----------



MIRL Rwy 14-32	HIRL Rwy 18R-36L and 18L-36R
----------------	------------------------------

The profile view shows the missed approach fix with altitudes of 2300, 2200, 1280, and 2500. Distances from the station are 8 NM, 2.5 NM, 1.4 NM, and 1.1 NM. A 3.08° climb gradient is indicated for the 2200-1280 segment. The chart also shows the LRD VORTAC station and the ELKOS LRD 15 station.

CATEGORY	A	B	C	D	E	
S-14	920-1	412 (500-1)	920-1¼	412 (500-1¼)	920-1½	412 (500-1½)
C CIRCLING	940-1	980-1	1100-1½	1200-2¼	1200-2½	692 (700-2½)
	432 (500-1)	472 (500-1)	592 (600-1½)	692 (700-2¼)	692 (700-2½)	

SC-3, 26 DEC 2024 to 23 JAN 2025

SC-3, 26 DEC 2024 to 23 JAN 2025