

LAS VEGAS, NEVADA

# ILS or LOC X RWY 21L

LOC I-DIQ <b>109.1</b>	APCH CRS <b>209°</b>	Rwy ldg TDZE Arpt Elev	21L <b>10,051</b> <b>1865</b> <b>1869</b>	21R <b>10,120</b> <b>1869</b>
---------------------------	-------------------------	------------------------------	--	-------------------------------------

AL-227 (USAF)

NELLIS AFB (KLSV)

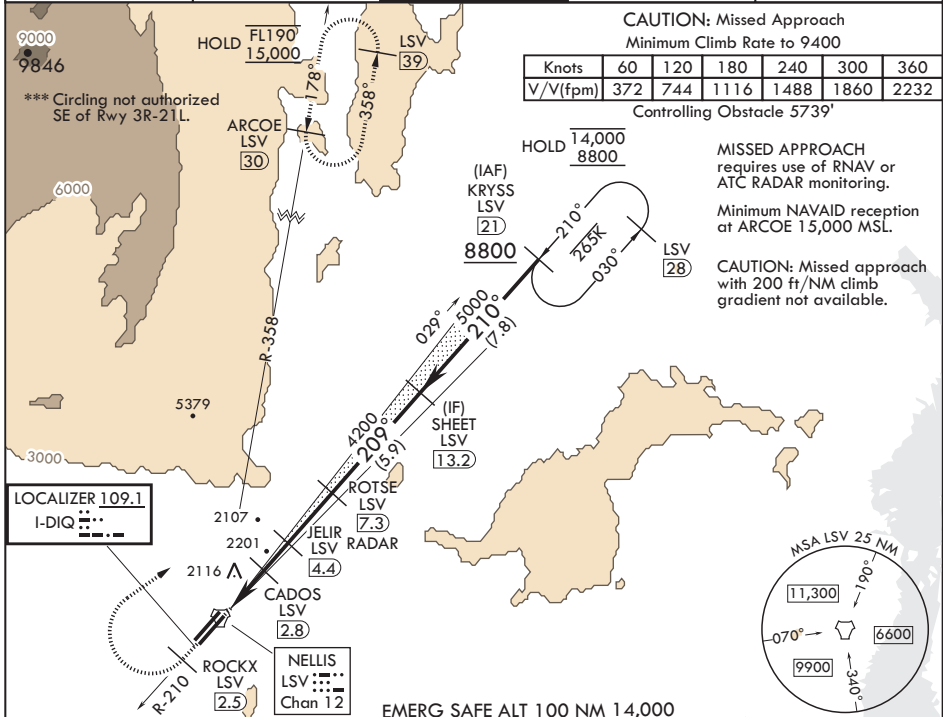
DME or RADAR required.

▲ \* When ALS inop, increase RVR to 40, vis to 3/4 mile.  
 \*\* When ALS inop, increase CAT AB RVR to 55, vis to 1 mile, CAT CDE vis to 1 3/8 miles.

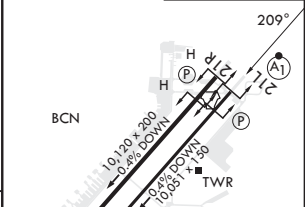
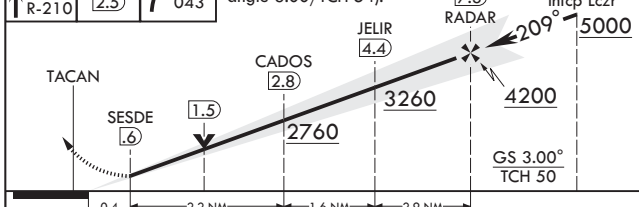


MISSED APPROACH: Climb to 15,000, intercept LSV TACAN R-210 to 2.5 DME (ROCKX), then climbing right turn heading 043° to intercept LSV R-358 to ARCOE and hold, climb in hold to 15,000. Missed approach not for civil use.

ATIS <b>270.1</b>	APP CON <b>124.95 273.55</b>	TOWER <b>132.55 327.0</b>	GND CON <b>121.8 275.8</b>	CLNC DEL <b>120.9 289.4</b>
----------------------	---------------------------------	------------------------------	-------------------------------	--------------------------------



15,000 LSV R-210	ROCKX LSV (2.5)	hdg 043°	VGSI and ILS glidepath not coincident (VGSI angle 3.00/TCH 54).	ROTSE (7.3) RADAR	SHEET (13.2) Intep Lczt	ELEV 1869	TDZE 21L 1865 TDZE 21R 1869
------------------	-----------------	----------	---	-------------------	-------------------------	-----------	--------------------------------



CATEGORY	A	B	C	D	E
S-ILS 21L*	2065/24		200	(200-1/2)	
S-LOC 21L**	2360/24	495 (500-1/2)	2360/50	495 (500-1)	
SIDESTEP 21R	2380-1	511 (600-1)	2380-1 1/8	511 (600-1 1/8)	
▲ CIRCLING***	2400-1 531 (600-1)	2460-1 591 (600-1)	2560-2 691 (700-2)	2840-3 971 (1000-3)	3140-3 1271 (1300-3)

FAF to MAP 6.7 NM					
Knots	60	90	120	150	180
Min:Sec	6:42	4:28	3:21	2:41	2:14

LAS VEGAS, NEVADA 36°14'N - 115°02'W NELLIS AFB (KLSV)

# ILS or LOC X RWY 21L

SW-4, 26 DEC 2024 to 23 JAN 2025

SW-4, 26 DEC 2024 to 23 JAN 2025