

# RNAV (GPS) RWY 20

LAS VEGAS MUNI (LVS)

APP CRS	Rwy Idg	<b>5006</b>
<b>202°</b>	TDZE	<b>6867</b>
	Apt Elev	<b>6877</b>

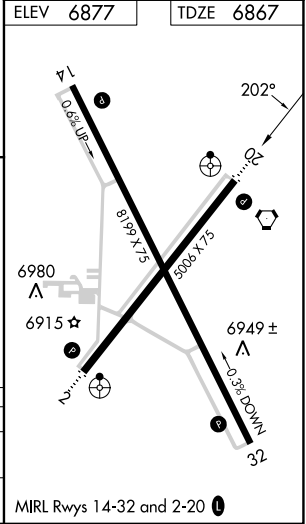
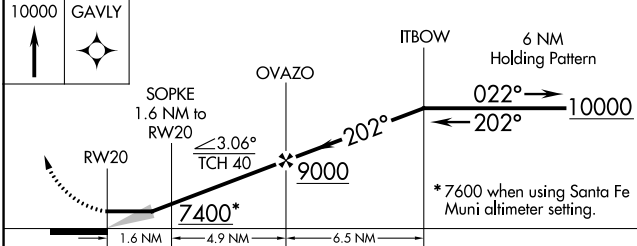
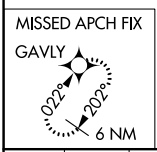
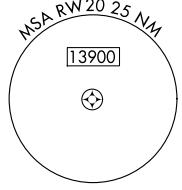
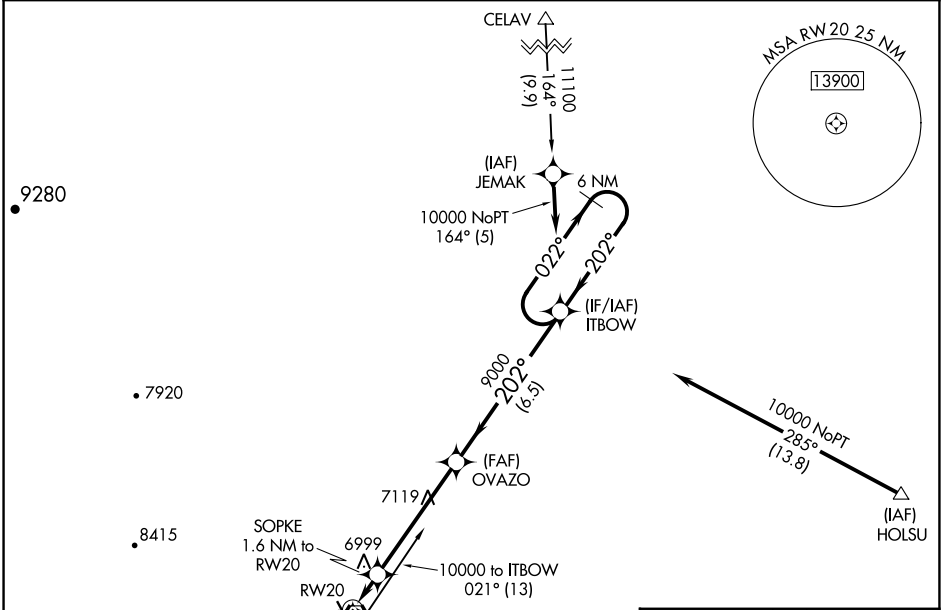
RNP APCH-GPS.

⚠ When local altimeter setting not received, use Santa Fe Rgnl altimeter setting and increase all MDAs 200 feet; increase LNAV Cat C visibility to 1½ SM and Circling Cat C visibility to 2¼ SM. Straight-in minimums NA when using Santa Fe Muni altimeter setting.

ODALS

MISSED APPROACH: Climb to 10000 direct GAVLY and hold.

ASOS <b>118.525</b>	ALBUQUERQUE CENTER <b>132.8 346.35</b>	UNICOM <b>122.8 (CTAF) 0</b>
------------------------	---	---------------------------------



CATEGORY	A	B	C	D
LNAV MDA	7260-¾ 393 (400-¾)			NA
CIRCLING	7420-1	543 (600-1)	7420-1½ 543 (600-1½)	NA

SW-1, 26 DEC 2024 to 23 JAN 2025

SW-1, 26 DEC 2024 to 23 JAN 2025