

FORT SILL, OKLAHOMA

RNAV (GPS) RWY 36

APCH CRS 356°	Rwy Idg TDZE Arprt Elev	5002 1187 1188
-------------------------	-------------------------------	---

(- USA)

HENRY POST AAF (KFSI)

▼ * When ALS inop, increase RVR to 45, vis to 7/8 mile.
 ** When ALS inop, increase CAT AB RVR to 55, vis to 1 mile; CAT CD vis to 1 3/8 miles.

SALS MISSED APPROACH: Climb to 4000 direct NICIR and hold. Radar required for MA to avoid active airspace.

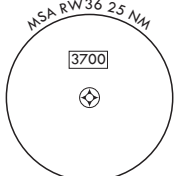
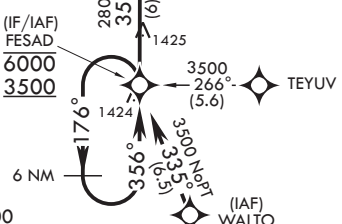
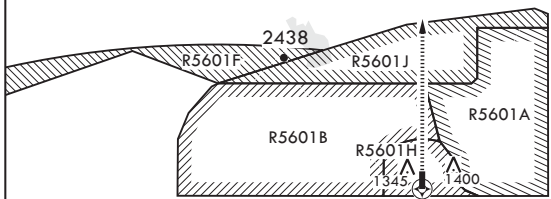
ATIS 135.425 354.025	FORT SILL APP CON/DEP CON 120.55 322.4	CLNC DEL 121.7 279.575	CTAF 124.95	ASR
--------------------------------	--	----------------------------------	-----------------------	-----



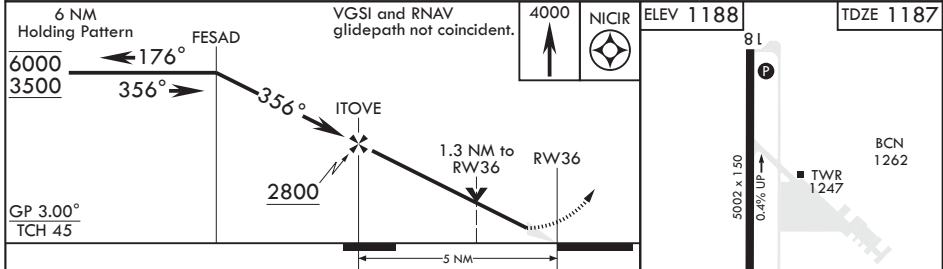
When local altimeter setting not received, use Lawton-Fort Sill RGNL altimeter setting.

For uncompensated Baro-VNAV systems, Procedure NA below -17°C or above 54°C.

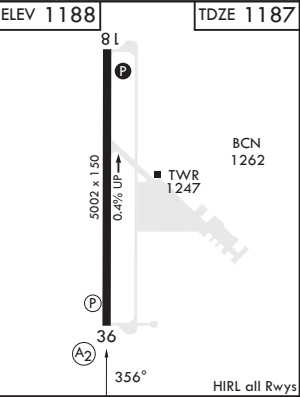
RADAR or ATC coordination required to avoid active special use airspace.



EMERG SAFE ALT 100 NM 4500



CATEGORY	A	B	C	D
LNAV/VNAV DA*	1490/40		303	(400-¾)
LNAV MDA**	1640/40	453 (500-¾)	1640/55	453 (500-1)
C CIRCLING	1680-1 492 (500-1)	1760-1 572 (600-1)	1820-1¾ 632 (700-1¾)	1920-2¼ 732 (800-2¼)



FORT SILL, OKLAHOMA
Amdt 3 30NOV23

34°39'N - 98°24'W

HENRY POST AAF (KFSI)

RNAV (GPS) RWY 36

SC-1, 26 DEC 2024 to 23 JAN 2025

SC-1, 26 DEC 2024 to 23 JAN 2025