

FORT SILL, OKLAHOMA

VOR RWY 18

VOR/DME LAW 116.85 Chan 115(Y)	APCH CRS 174°	Rwy ldg TDZE 1188 Arprt Elev 1188
--	-------------------------	---

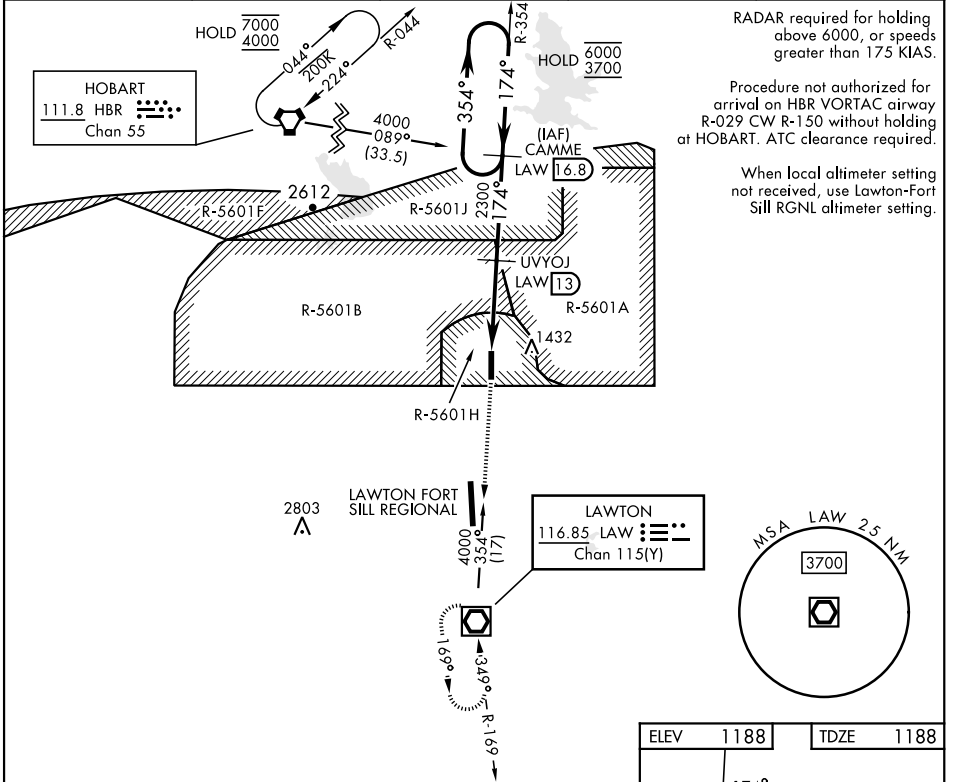
[USA]

HENRY POST AAF (KFSI)

DME required

MISSED APPROACH: Climb straight ahead to 3000 direct to LAW VOR/DME and hold.

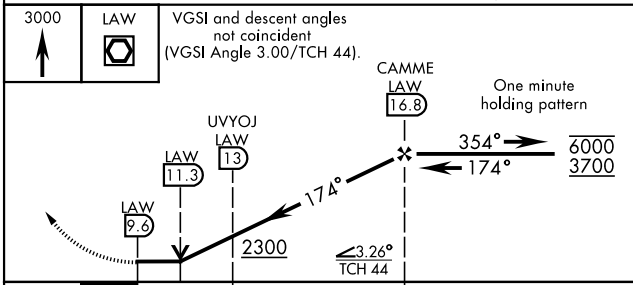
ATIS 135.425 354.025	FORT SILL APP/DEP CON 120.55 322.4	CTAF 124.950	CLNC DEL 121.7 279.575	ASR
--------------------------------	--	------------------------	----------------------------------	-----



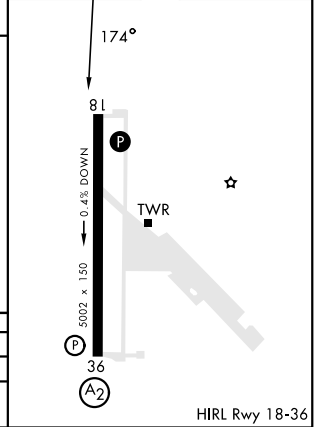
RADAR required for holding above 6000, or speeds greater than 175 KIAS.

Procedure not authorized for arrival on HBR VORTAC airway R-029 CW R-150 without holding at HOBBART. ATC clearance required.

When local altimeter setting not received, use Lawton-Fort Sill RGNL altimeter setting.



ELEV	1188	TDZE	1188
------	------	------	------



CATEGORY	A	B	C	D
S-18	1760/55 572 (600-1)		1760-1½ 572 (600-1½)	
CIRCLING	1760-1 572 (600-1)		1820-1¾ 632 (700-1¾) 1920-2¼ 732 (800-2¼)	

FORT SILL, OKLAHOMA
Amdt 3 31OCT24

34° 39' N-98° 24' W

HENRY POST AAF (KFSI)

VOR RWY 18

SC-1, 26 DEC 2024 to 23 JAN 2025

SC-1, 26 DEC 2024 to 23 JAN 2025