

FORT SILL, OKLAHOMA

VOR RWY 36

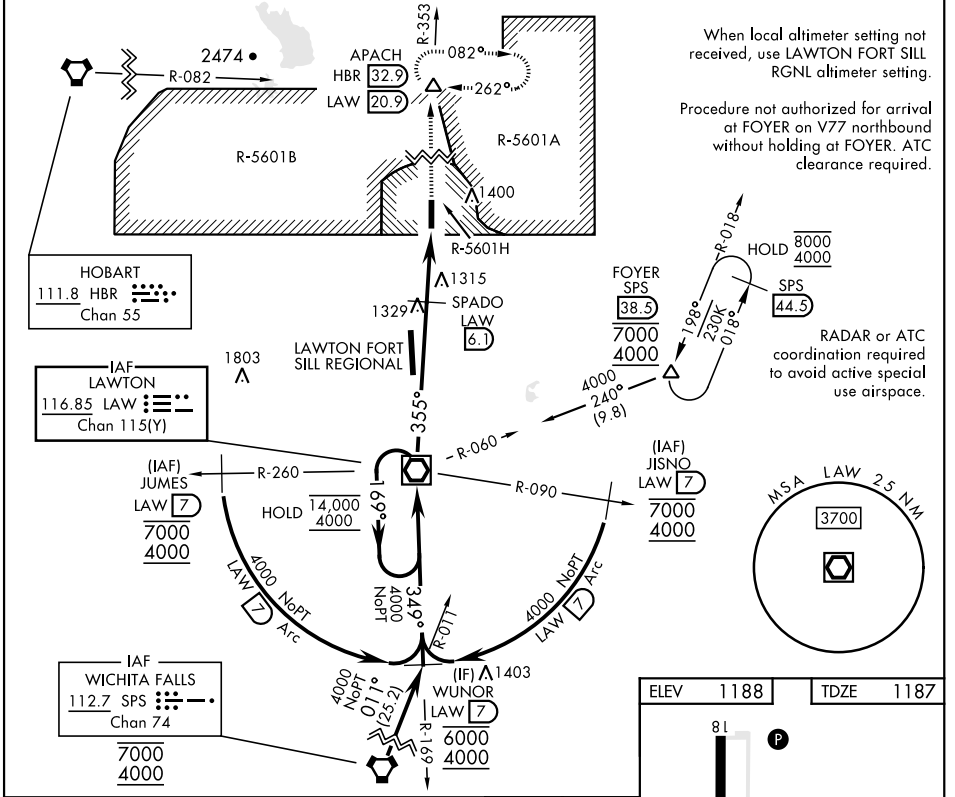
VOR/DME LAW 116.85 Chan 115(Y)	APCH CRS 355°	Rwy Idg TDZE 1187 Arprt Elev 1188
--	-------------------------	---

[USA]

HENRY POST AAF (KFSI)

DME, RADAR required.	SALS (A2)	MISSED APPROACH: Climb to 4000 on LAW VOR/DME R-353 to APACH INT/LAW 20.9 DME and hold.
----------------------	---------------------	---

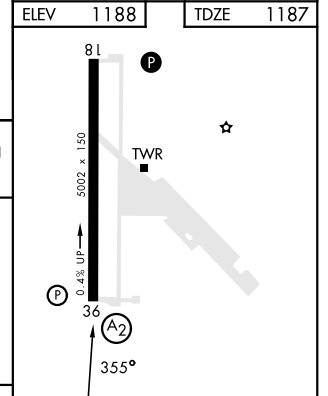
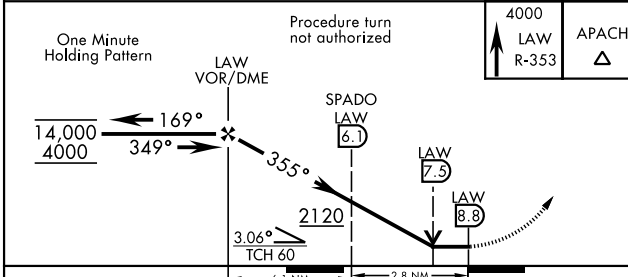
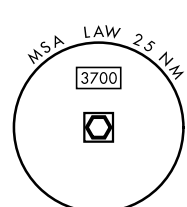
ATIS 135.425 354.025	FORT SILL APP/DEP CON 120.55 322.4	CTAF 124.950	CLNC DEL 121.7 279.575	ASR
--------------------------------	--	------------------------	----------------------------------	-----



When local altimeter setting not received, use LAWTON FORT SILL RGNL altimeter setting.

Procedure not authorized for arrival at FOYER on V77 northbound without holding at FOYER. ATC clearance required.

RADAR or ATC coordination required to avoid active special use airspace.



CATEGORY	A	B	C	D
S-36 *	1640/40	453 (500-3/4)	1640/55	453 (500-1)
CIRCLING	1680-1	1760-1	1820-1 3/4	1920-2 1/4
	492 (500-1)	572 (600-1)	632 (700-1 3/4)	732 (800-2 1/4)

HIRL Rwy 18-36					
FAF to MAP 8.8 NM					
Knots	60	90	120	150	180
Min:Sec	8:48	5:52	4:24	3:31	2:56

FORT SILL, OKLAHOMA
Amdt 16 31OCT24

34° 39' N-98° 24' W

HENRY POST AAF (KFSI)

VOR RWY 36

SC-1, 26 DEC 2024 to 23 JAN 2025

SC-1, 26 DEC 2024 to 23 JAN 2025