

LITTLE ROCK, ARKANSAS

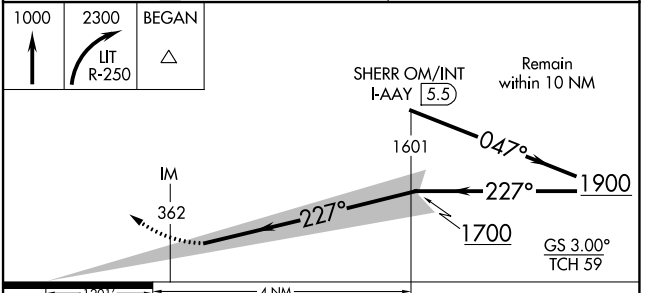
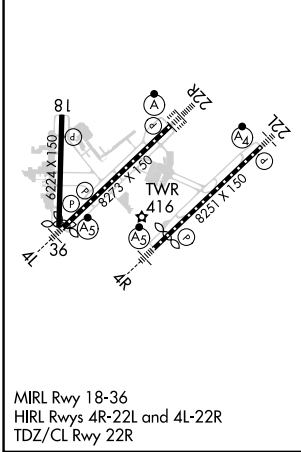
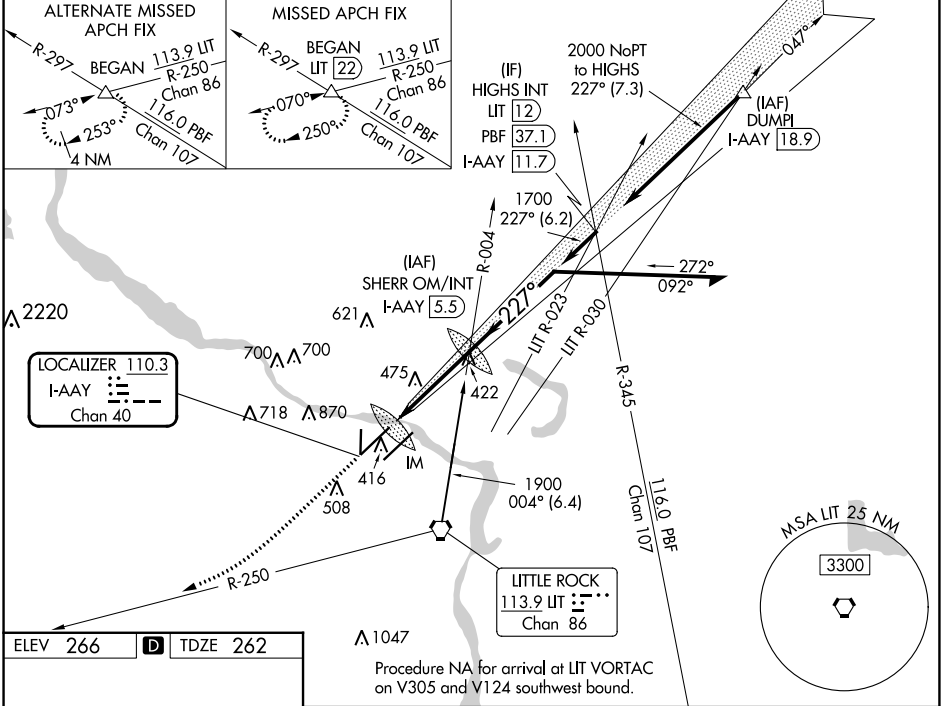
AL-233 (FAA)

24193

LOC/DME I-AAY <b>110.3</b> Chan 40	APP CRS <b>227°</b>	Rwy Idg TDZE Apt Elev	<b>8273</b> <b>262</b> <b>266</b>
--	------------------------	-----------------------------	---

**ILS RWY 22R (SA CAT I)**  
BILL AND HILLARY CLINTON NTL/ADAMS FLD (LIT)

DME required.		ALSF-2	MISSED APPROACH: Climb to 1000 then climbing right turn to 2300 on LIT VORTAC R-250 to BEGAN INT/LIT 22 DME and hold.	
<p>Simultaneous approach authorized with Rwy 22L. Requires specific OPSPEC, MSPEC, or LOA approval and use of HUD to DA.</p>				
D-ATIS <b>125.65</b>	LITTLE ROCK APP CON <b>135.4 353.6</b>	ADAMS TOWER <b>118.7 257.8</b>	GND CON <b>121.9 339.8</b>	CLNC DEL <b>118.95</b>



CATEGORY	A	B	C	D
S-ILS-22R	RA 182/14 150 DA 412			

**SA CATEGORY I ILS - SPECIAL AIRCREW & AIRCRAFT CERTIFICATION REQUIRED**

LITTLE ROCK, ARKANSAS  
Amdt 3B 15JUN23

BILL AND HILLARY CLINTON NTL/ADAMS FLD (LIT)  
34°44'N-92°13'W  
**ILS RWY 22R (SA CAT I)**

SC-1, 26 DEC 2024 to 23 JAN 2025

SC-1, 26 DEC 2024 to 23 JAN 2025