

LOC/DME I-AAY 110.3 Chan 40	APP CRS 227°	Rwy Idg 8273 TDZE 262 Apt Elev 266
--	------------------------	---

ILS or LOC RWY 22R

BILL AND HILLARY CLINTON NTL/ADAMS FLD (LIT)

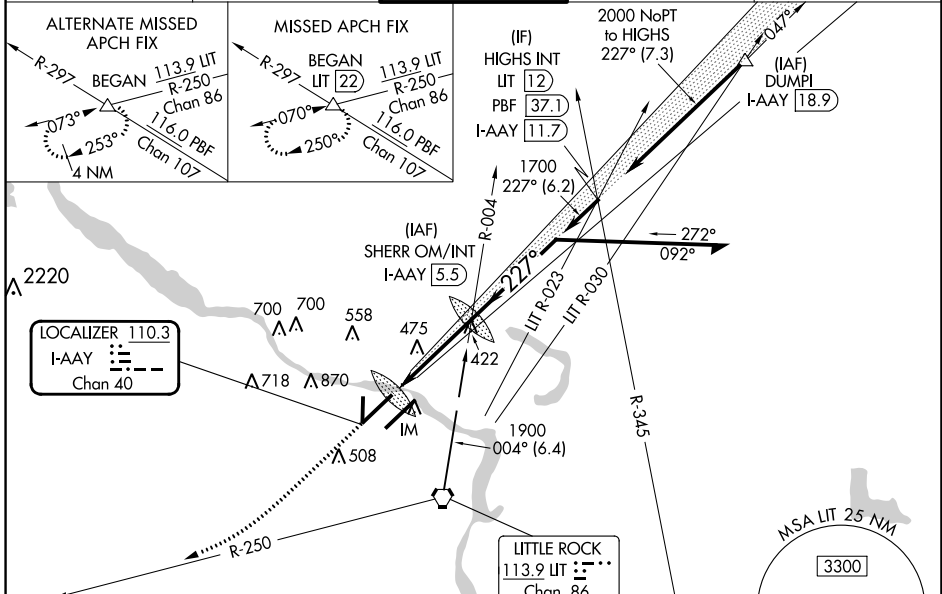
DME required.

Simultaneous approach authorized with Rwy 22L.
For inop ALS, increase S-LOC Cat C/D visibility to RVR 6000.

ALS-2

MISSED APPROACH: Climb to 1000 then climbing right turn to 2300 on LIT VORTAC R-250 to BEGAN INT/LIT 22 DME and hold.

D-ATIS 125.65	LITTLE ROCK APP CON 135.4 353.6	ADAMS TOWER 118.7 257.8	GND CON 121.9 339.8	CLNC DEL 118.95
-------------------------	---	-----------------------------------	-------------------------------	---------------------------



ELEV 266	D TDZE 262
----------	------------

Procedure NA for arrival at LIT VORTAC on V305 and V124 southwest bound.

1000, 2300, BEGAN, SHERR OM/INT I-AAY 5.5, Remain within 10 NM.

I-AAY 1.5, IM, I-AAY 2.5, 1601, 1700, 1900, GS 3.00° TCH 59.

0.1, 1 NM, 2.9 NM

CATEGORY	A	B	C	D
S-ILS 22R	462/18 200 (200-½)			
S-LOC 22R	680/24	418 (500-½)	680/40	418 (500-¾)
CIRCLING	820-1 554 (600-1)	1000-1 734 (800-1)	1180-2¾ 914 (1000-2¾)	1180-3 914 (1000-3)

MIRL Rwy 18-36
HIRL Rws 4R-22L and 4L-22R
TDZ/CL Rwy 22R

FAF to MAP 4 NM

Knots	60	90	120	150	180
Min:Sec	4:00	2:40	2:00	1:36	1:20

SC-1, 26 DEC 2024 to 23 JAN 2025

SC-1, 26 DEC 2024 to 23 JAN 2025