

LOC/DME I-LIT 110.3 Chan 40	APP CRS 047°	Rwy Idg 7976 TDZE 258 Apt Elev 266
--	------------------------	---

ILS or LOC RWY 4L

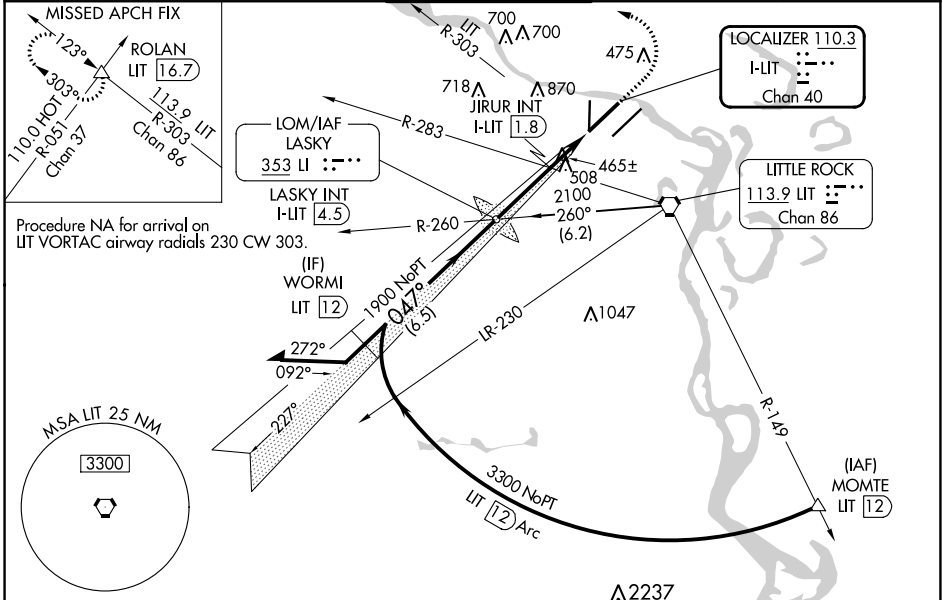
BILL AND HILLARY CLINTON NTL/ADAMS FLD (LIT)

⚠ Simultaneous approach authorized. Rwy 4L helicopter visibility reduction below RVR 4000 NA. Inop table does not apply to S-ILS 4L all Cats. LOC minimums: For inop ALS, increase S-LOC 4L Cats A/B visibility to 1 SM and Cats C/D visibility to 2 SM. JIRUR fix minimums: For inop ALS, increase S-LOC 4L Cats A/B visibility to 1 SM and Cats C/D visibility to 1 1/2 SM.

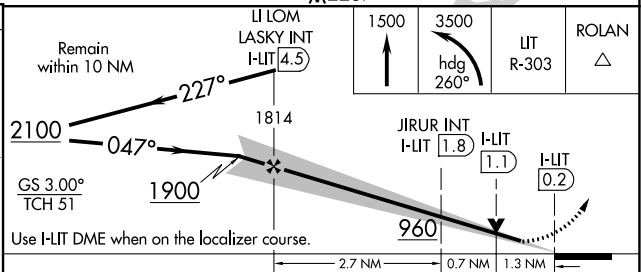
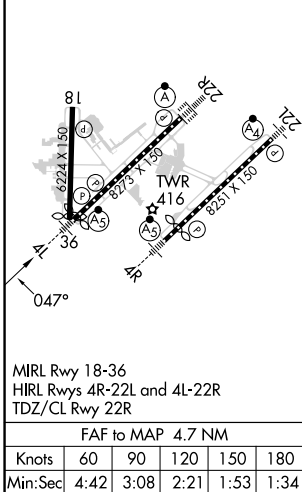
MALSR
AS

MISSED APPROACH: Climb to 1500 then climbing left turn to 3500 on heading 260° and on LT VORTAC R-303 to ROLAN INT/LIT 16.7 DME and hold.

D-ATIS 125.65	LITTLE ROCK APP CON 135.4 353.6	ADAMS TOWER 118.7 257.8	GND CON 121.9 339.8	CLNC DEL 118.95
-------------------------	---	-----------------------------------	-------------------------------	---------------------------



ELEV 266	D	TDZE 258
----------	----------	----------



CATEGORY	A	B	C	D
S-ILS 4L	508/40 250 (300-3/4)			
S-LOC 4L	960/40	702 (700-3/4)	960-1 1/2	702 (700-1 1/2)
C CIRCLING	960-1 694 (700-1)	1000-1 734 (800-1)	1180-2 3/4 914 (1000-2 3/4)	1180-3 914 (1000-3)
JIRUR FIX MINIMUMS (DUAL VOR RECEIVERS OR DME REQUIRED)				
S-LOC 4L	720/40	462 (500-3/4)	720/50	462 (500-1)
C CIRCLING	820-1 554 (600-1)	1000-1 734 (800-1)	1180-2 3/4 914 (1000-2 3/4)	1180-3 914 (1000-3)

SC-1, 26 DEC 2024 to 23 JAN 2025

SC-1, 26 DEC 2024 to 23 JAN 2025