

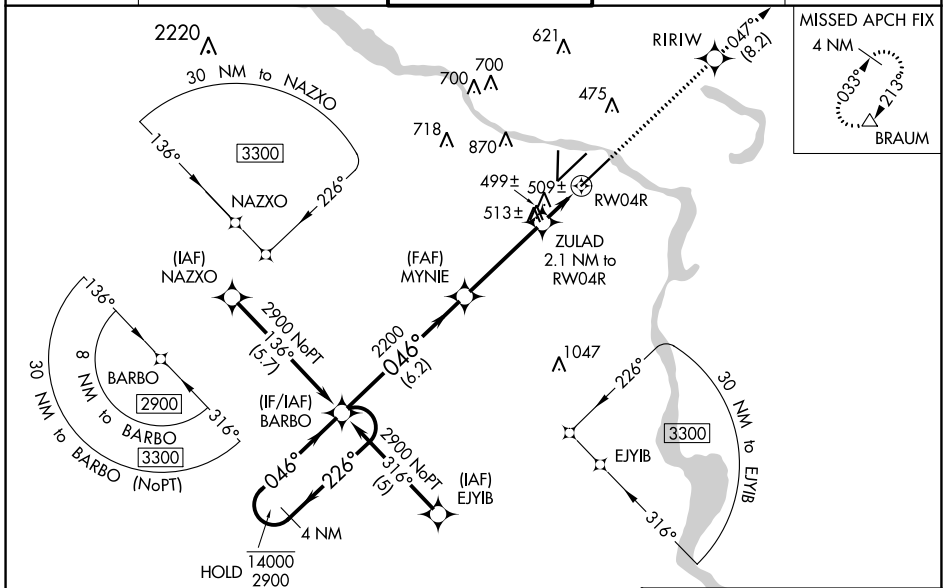
WAAS CH <b>70611</b> W04B	APP CRS <b>046°</b>	Rwy Idg <b>7200</b> TDZE <b>260</b> Apt Elev <b>266</b>
---------------------------------	------------------------	---

# RNAV (GPS) RWY 4R

BILL AND HILLARY CLINTON NTL/ADAMS FLD (LIT)

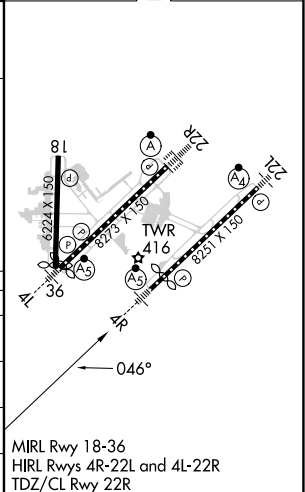
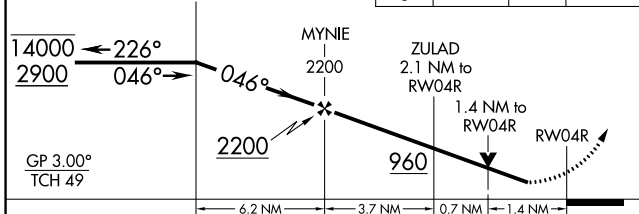
RNP APCH-GPS.	MALSR	MISSED APPROACH: Climb to 2900 direct RIRIW and on track 047° to BRAUM and hold.
---------------	-------	---

D-ATIS <b>125.65</b>	LITTLE ROCK APP CON <b>135.4 353.6</b>	ADAMS TOWER <b>118.7 257.8</b>	GND CON <b>121.9 339.8</b>	CLNC DEL <b>118.95</b>
-------------------------	---	-----------------------------------	-------------------------------	---------------------------



ELEV 266	<b>D</b> TDZE 260
----------	-------------------

4 NM Holding Pattern BARBO	2900	RIRIW	tr 047°	BRAUM
----------------------------	------	-------	---------	-------



CATEGORY	A	B	C	D
LPV DA		574/40	314 (400-¾)	
LNAV/VNAV DA		756/50	496 (500-1)	
LNAV MDA	760/40	500 (500-¾)	760/50	500 (500-1)
<b>C</b> CIRCLING	820-1 554 (600-1)	1000-1 734 (800-1)	1180-2¾ 914 (1000-2¾)	1180-3 914 (1000-3)

SC-1, 26 DEC 2024 to 23 JAN 2025

SC-1, 26 DEC 2024 to 23 JAN 2025