

LOC/DME I-LNR	APP CRS	Rwy Idg	<b>5000</b>
<b>108.35</b>	<b>270°</b>	TDZE	<b>717</b>
Chan <b>20(Y)</b>		Apt Elev	<b>717</b>

# LOC RWY 27

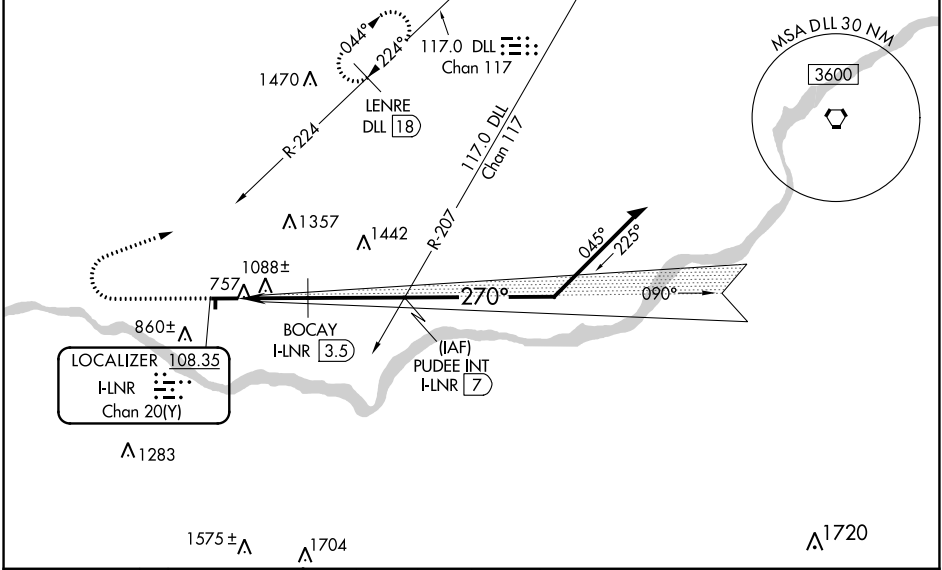
TRI-COUNTY RGNL (LNR)

DME required. RADAR required for procedure entry.

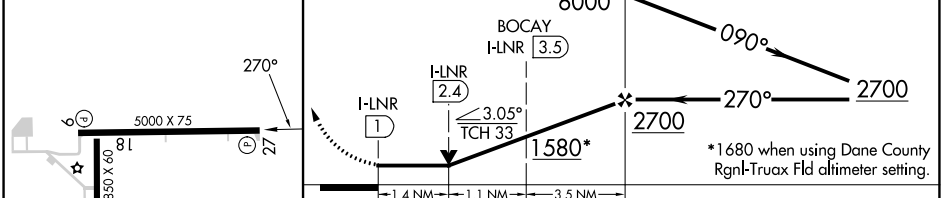
NA  
 -30°C  
 Circling Rwy 18, 36 NA at night. Rwy 27 helicopter visibility reduction below 3/4 SM NA. If local altimeter setting not received, use Dane County Rgnl-Truox fld altimeter setting and increase all MDA 120 feet. Increase S-27 visibility Cat A/B 1/4 SM, Cat C 1/2 SM, Circling visibility Cat B 1/4 SM, Cat C 1/2 SM. Increase BOCAV fix minimums S-27 visibility Cat C 1/4 SM, Circling Cat A/B 1/4 SM, Cat C 1/2 SM.

**MISSED APPROACH:**  
 Climb to 2200 then climbing right turn to 3300 on heading 070° and on DLL R-224 to LENRE/DLL VORTAC 18 DME and hold.

ASOS <b>119.425</b>	MADISON APP CON ★ <b>135.45 343.7</b>	UNICOM <b>123.0 (CTAF) 0</b>
------------------------	--	---------------------------------



ELEV 717	TDZE 717	2200	3300	DLL R-224	LENRE DLL 18	VGSI and descent angles not coincident (VGSI Angle 4.00/TCH 35).	PUDEE INT I-LNR 7	Remain within 10 NM
----------	----------	------	------	-----------	--------------	--	-------------------	---------------------



CATEGORY	A	B	C	D
S-LOC 27	1580-1 863 (900-1)	1580-1¼ 863 (900-1¼)	1580-2½ 863 (900-2½)	NA
<b>C</b> CIRCLING	1580-1¼ 863 (900-1¼)	863 (900-1¼)	1580-2½ 863 (900-2½)	NA
BOCAV FIX MINIMUMS				
S-LOC 27	1360-1 643 (700-1)	643 (700-1)	1360-1¾ 643 (700-1¾)	NA
<b>C</b> CIRCLING	1520-1 803 (900-1)	803 (900-1)	1560-2½ 843 (900-2½)	NA

REIL Rwy 9 and 27 **0**  
 MIRL Rwys 9-27 and 18-36 **0**  
 FAF to MAP 6 NM  

Knots	60	90	120	150	180
Min:Sec	6:00	4:00	3:00	2:24	2:00

EC-3, 26 DEC 2024 to 23 JAN 2025

EC-3, 26 DEC 2024 to 23 JAN 2025