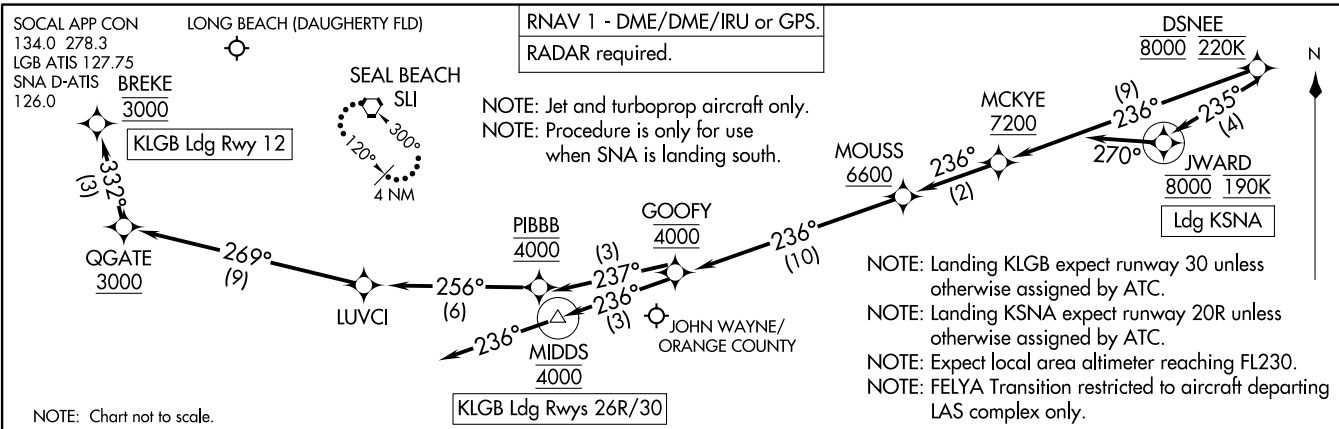


DSN66
 (DSN66.DSN66) 055F24

DSN66 SIX ARRIVAL (RNAV) Arrival Routes

LONG BEACH, CALIFORNIA



ARRIVAL ROUTE DESCRIPTION

LANDING KLGB RUNWAY 12: From DSN66 on track 236° to cross MCKYE at or above 7200, then on track 236° to cross MOUSS at or above 6600, then on track 236° to cross GOOFOY at 4000, then on track 237° to cross PIBBB at 4000, then on track 256° to LUVCI, then on track 269° to cross QWATE at or above 3000, then on track 332° to cross BREKE at 3000. Expect RNAV (RNP) RWY 12 approach.

LANDING KLGB RUNWAYS 26R, 30: From DSN66 on track 236° to cross MCKYE at or above 7200, then on track 236° to cross MOUSS at or above 6600, then on track 236° to cross GOOFOY at 4000, then on track 236° to cross MIDDS at 4000, then on track 236°. Expect RADAR vectors for the ILS or RNAV RWY 26R, 30 approaches.

LANDING KSNA: From DSN66 on track 235° to cross JWARD at 8000 and at 190K, then on heading 270°. Expect RADAR vectors for ILS or RNAV RWY 20R approach.

LOST COMMUNICATIONS:

LANDING LGB RUNWAYS 26R/30: After MIDDS proceed on the RNAV (RNP) Y RWY 30 or ILS or LOC RWY 30 approach.

LANDING LGB RUNWAY 12: After BREKE proceed on the RNAV (RNP) RWY 12 approach, if unable to conduct approach, after BREKE proceed to SLI VORTAC and hold.

LANDING SNA: After DSN66 proceed on the RNAV (RNP) Z RWY 20R approach. If unable to conduct approach, after DSN66 maintain 6000 proceed to SLI VORTAC and hold.

(DSN66.DSN66) 24249
 DSN66 SIX ARRIVAL (RNAV) Arrival Routes
 A1-236 (FAA)

LONG BEACH, CALIFORNIA