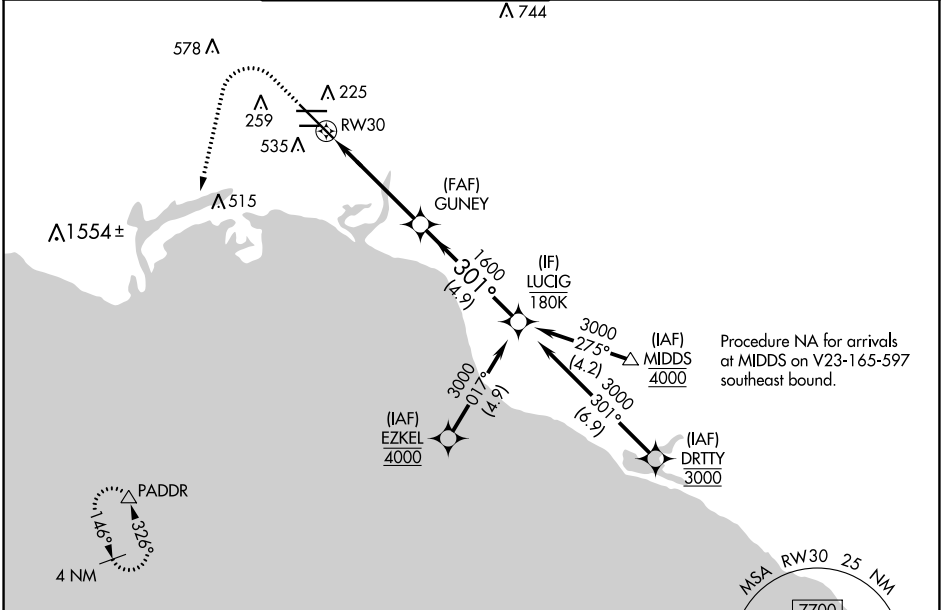


APP CRS	Rwy Idg	7414
301°	TDZE	38
	Apt Elev	60

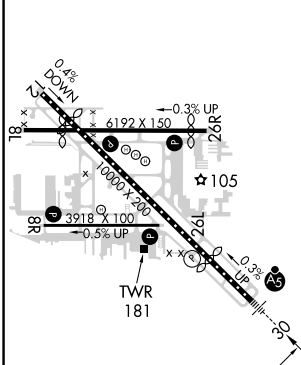
RNAV (RNP) Y RWY 30

LONG BEACH (DAUGHERTY FLD) (LGB)

RNP AR APCH.		MALSR		MISSED APPROACH: Climb to 800 then climbing left turn to 3000 direct PADDR and hold.	
<p>For uncompensated Baro-VNAV systems, procedure NA below 4° C or above 54° C.</p>					
ATIS	SOCAL APP CON	LONG BEACH TOWER*	GND CON	CLNC DEL	UNICOM
127.75	125.35 316.125	120.5 257.6 (Rwy 12) 119.4 (CTAF) 257.6 (Rwy 30)	133.0 257.6	118.15	122.95

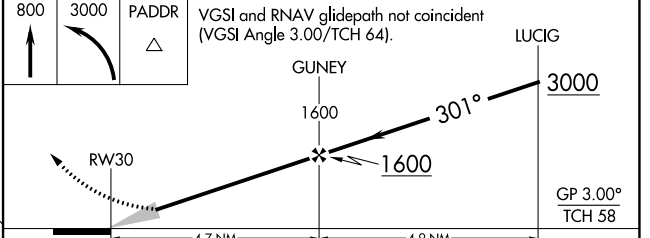


ELEV 60	D	TDZE 38
---------	----------	---------



TDZ/CL Rwy 30
 HIRL Rwy 12-30
 HIRL Rwy 8R-26L
 MIRL Rwy 8L-26R
 REL Rwy 8R, 12, 26L, and 26R

800	3000	PADDR	VGSI and RNAV glidepath not coincident (VGSI Angle 3.00/TCH 64).



CATEGORY	A	B	C	D
RNP 0.30 DA		384/30	346 (400-5%)	

AUTHORIZATION REQUIRED

SW-3, 26 DEC 2024 to 23 JAN 2025

SW-3, 26 DEC 2024 to 23 JAN 2025