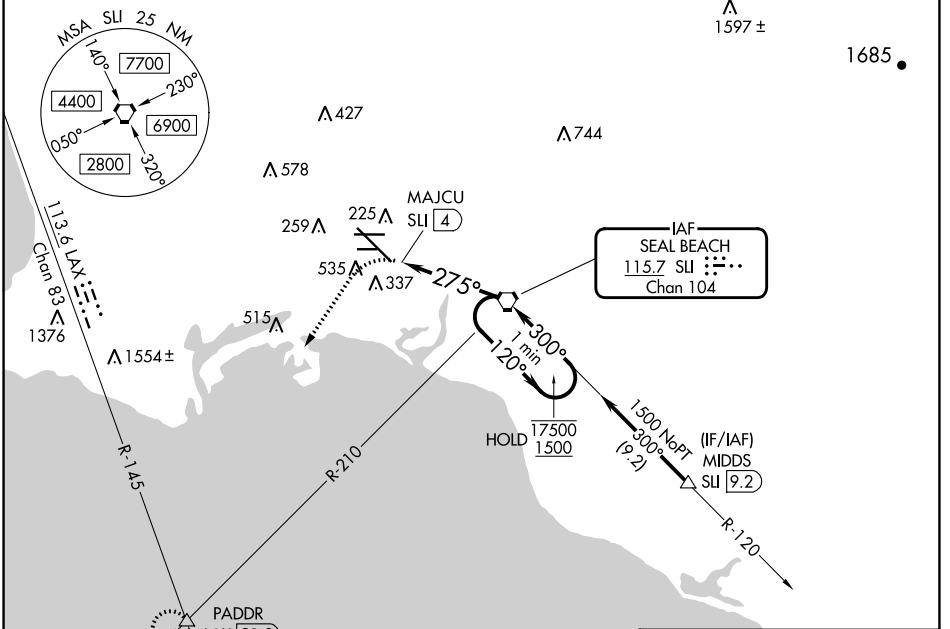


VORTAC SU 115.7 Chan 104	APP CRS 275°	Rwy ldg TDZE 38 Apt Elev 60	7414
----------------------------------------------	------------------------	-------------------------------------------------	-------------

VOR or TACAN RWY 30

LONG BEACH (DAUGHERTY FLD) (LGB)

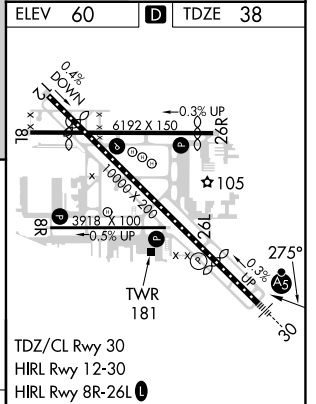
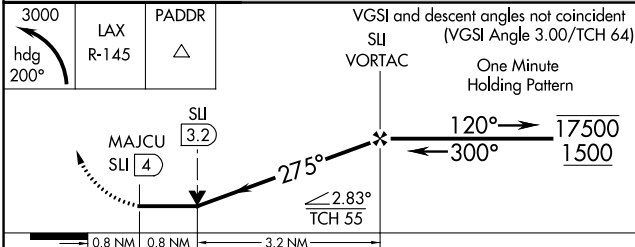
▽ Rwy 30 helicopter visibility reduction below RVR 4000 NA. △ Inop table does not apply.	MALSR 	MISSED APPROACH: Climbing left turn to 3000 on heading 200° and LAX VORTAC R-145 to PADDR INT/LAX 21.8 DME and hold.			
		ATIS 127.75	SOCAL APP CON 125.35 316.125	LONG BEACH TOWER* 120.5 257.6 (Rwy 12) 119.4 (CTAF) 0 257.6 (Rwy 30)	GND CON 133.0 257.6



SW-3, 26 DEC 2024 to 23 JAN 2025

SW-3, 26 DEC 2024 to 23 JAN 2025

ELEV 60	D TDZE 38
----------------	-------------------------



CATEGORY	A	B	C	D
S-30	600/55 562 (600-1)		600-1 5/8 562 (600-1 1/8)	
C CIRCLING	840-1 780 (800-1)		840-2 1/4 780 (800-2 1/4)	840-2 1/2 780 (800-2 1/2)

FAF to MAP 4 NM					
Knots	60	90	120	150	180
Min:Sec	4:00	2:40	2:00	1:36	1:20