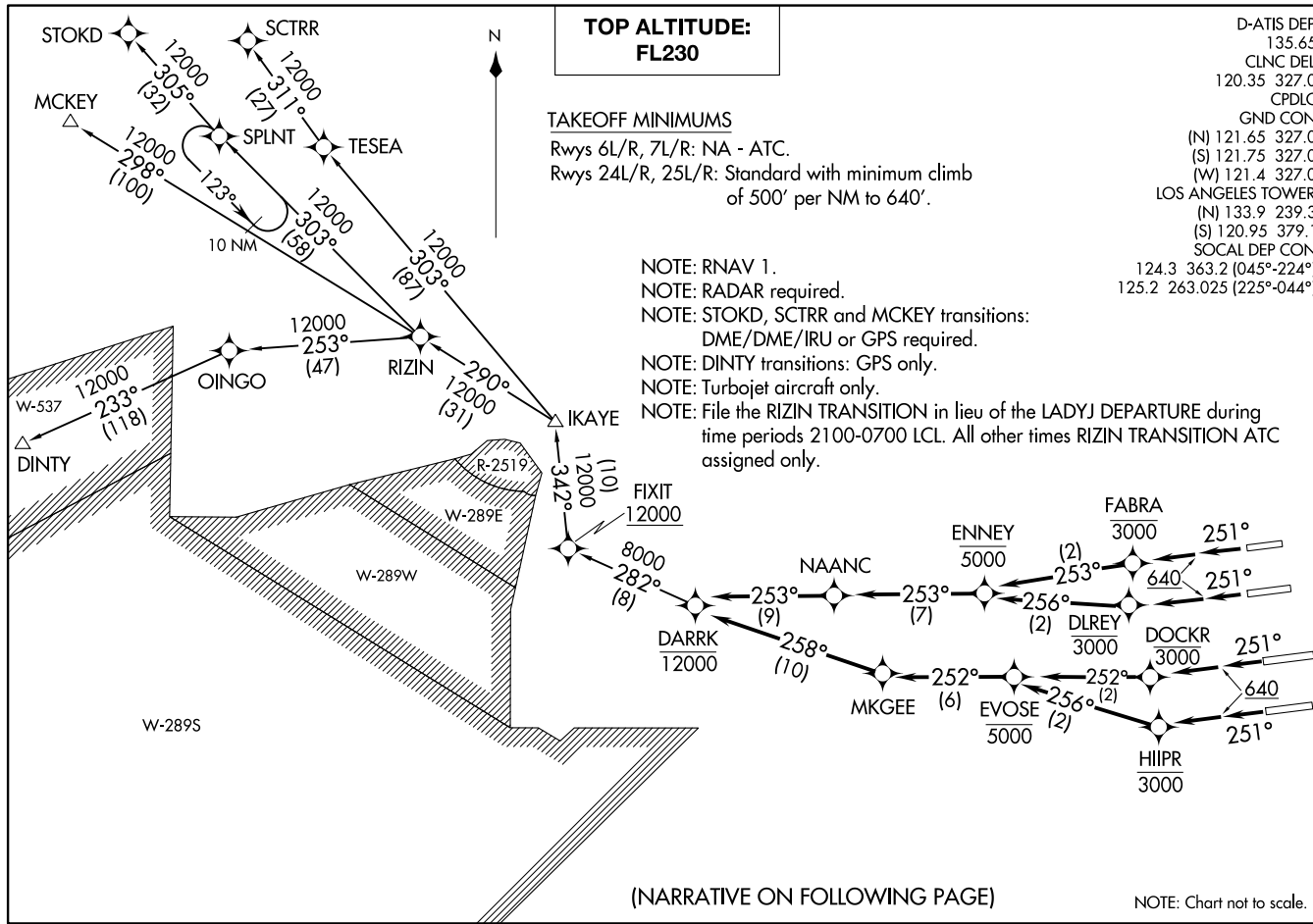


DARRK THREE DEPARTURE (RNAV)
(DARRK3.DARRK) 100CT19

LOS ANGELES, CALIFORNIA
LOS ANGELES INTL (LAX)



TOP ALTITUDE:
FL230

TAKEOFF MINIMUMS

Rwys 6L/R, 7L/R: NA - ATC.
Rwys 24L/R, 25L/R: Standard with minimum climb
of 500' per NM to 640'.

- NOTE: RNAV 1.
- NOTE: RADAR required.
- NOTE: STOKD, SCTRR and MCKEY transitions:
DME/DME/IRU or GPS required.
- NOTE: DINTY transitions: GPS only.
- NOTE: Turbojet aircraft only.
- NOTE: File the RIZIN TRANSITION in lieu of the LADYJ DEPARTURE during
time periods 2100-0700 LCL. All other times RIZIN TRANSITION ATC
assigned only.

D-ATIS DEP	135.65
CLNC DEL	120.35 327.0
CPDLC	
GND CON	
(N)	121.65 327.0
(S)	121.75 327.0
(W)	121.4 327.0
LOS ANGELES TOWER	
(N)	133.9 239.3
(S)	120.95 379.1
SOCAL DEP CON	
	124.3 363.2 (045°-224°)
	125.2 263.025 (225°-044°)

(NARRATIVE ON FOLLOWING PAGE)

NOTE: Chart not to scale.

(DARRK3.DARRK) 19288
DARRK THREE DEPARTURE (RNAV)

AL-237 (FAA)

LOS ANGELES INTL (LAX)
LOS ANGELES, CALIFORNIA



DEPARTURE ROUTE DESCRIPTION

TAKEOFF RUNWAY 24L: Climb heading 251° to 640, then climb direct to cross DLREY at or below 3000, then on track 256° to cross ENNEY at or below 5000, then on track 253° to NAANC, then on track 253° to cross DARRK at or below 12000, thence. . . .

TAKEOFF RUNWAY 24R: Climb heading 251° to 640, then climb direct to cross FABRA at or below 3000, then on track 253° to cross ENNEY at or below 5000, then on track 253° to NAANC, then on track 253° to cross DARRK at or below 12000, thence. . . .

TAKEOFF RUNWAY 25L: Climb heading 251° to 640, then climb direct to cross HIIPR at or below 3000, then on track 256° to cross EVOSE at or below 5000, then on track 252° to MKGEE, then on track 258° to cross DARRK at or below 12000, thence. . . .

TAKEOFF RUNWAY 25R: Climb heading 251° to 640, then climb direct to cross DOCKR at or below 3000, then on track 252° to cross EVOSE at or below 5000, then on track 252° to MKGEE, then on track 258° to cross DARRK at or below 12000, thence. . . .

. . . .on (transition) maintain FL230. Expect filed altitude 5 minutes after departure.

DINTY TRANSITION (DARRK3.DINTY)

MCKEY TRANSITION (DARRK3.MCKEY)

RIZIN TRANSITION (DARRK3.RIZIN)

SCTRR TRANSITION (DARRK3.SCTRR)

STOKD TRANSITION (DARRK3.STOKD)

SW-3, 26 DEC 2024 to 23 JAN 2025

SW-3, 26 DEC 2024 to 23 JAN 2025