

DIRBY TWO ARRIVAL (RNAV)

AL-237 (FAA)

LOS ANGELES INTL (LAX)
LOS ANGELES, CALIFORNIA

SW-3, 26 DEC 2024 to 23 JAN 2025

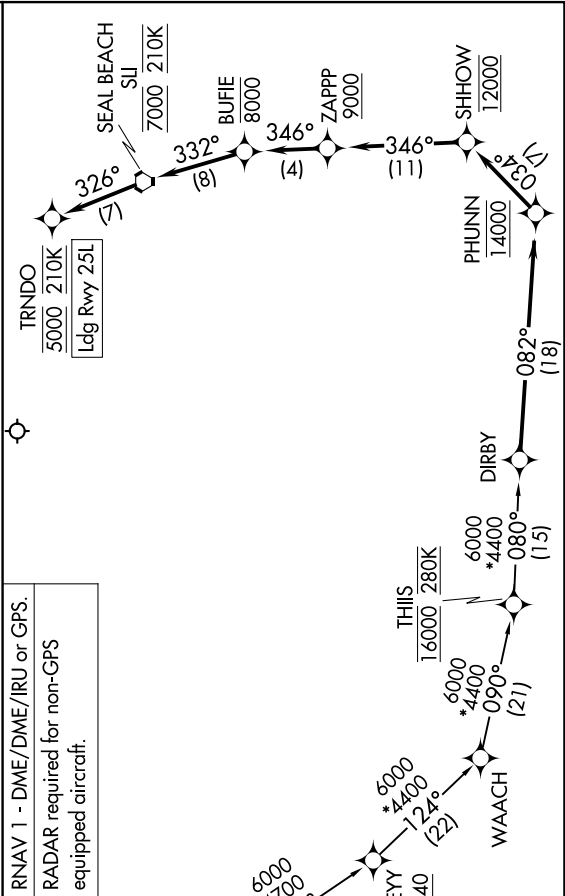
ARRIVAL ROUTE DESCRIPTION

RDHOT TRANSITION (RDHOT.DIRBY2)
TCUPS TRANSITION (TCUPS.DIRBY2)
TILLT TRANSITION (TILLT.DIRBY2)

From DIRBY on track 082° to cross PHUNN at 14000, then on track 034° to cross SHHOW at 12000, then on track 346° to cross ZAPPP at or above 9000, then on track 346° to cross BUJIE at or below 8000, then on track 332° to cross SLI VORTAC at 7000 and at 210K, then on track 326° to cross TRNDO at 5000 and at 210K. Expect ILS or LOC RWY 25L or RNAV (RNP) Z RWY 25L.

LOST COMMUNICATIONS

In the event of lost communications: RNP arrivals proceed on the RNAV (RNP) Z RWY 25L approach. All other aircraft proceed on the ILS or LOC RWY 25L.



RNAV 1 - DME/DME/IRU or GPS.

RADAR required for non-GPS equipped aircraft.

SOCAL APP CON
127.4 387.025
D-ATIS 133.8

LOS ANGELES TOWER
133.9 239.3 (N)
120.95 379.1 (S)

NOTE: Jet aircraft only.
NOTE: Do not file - to be assigned by ATC.
NOTE: Expect runway 25L unless otherwise assigned by ATC.
NOTE: Chart not to scale.

SW-3, 26 DEC 2024 to 23 JAN 2025

DIRBY TWO ARRIVAL (RNAV)

LOS ANGELES, CALIFORNIA
LOS ANGELES INTL (LAX)