

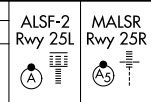
LOC/DME I-LAX	APP CRS	Rwy ldg	25L	25R
<b>109.9</b>	<b>251°</b>	<b>11095</b>	<b>11134</b>	
Chan <b>36</b>		TDZE	<b>104</b>	<b>104</b>
		Apt Elev	<b>128</b>	<b>128</b>

# ILS or LOC RWY 25L

LOS ANGELES INTL (LAX)

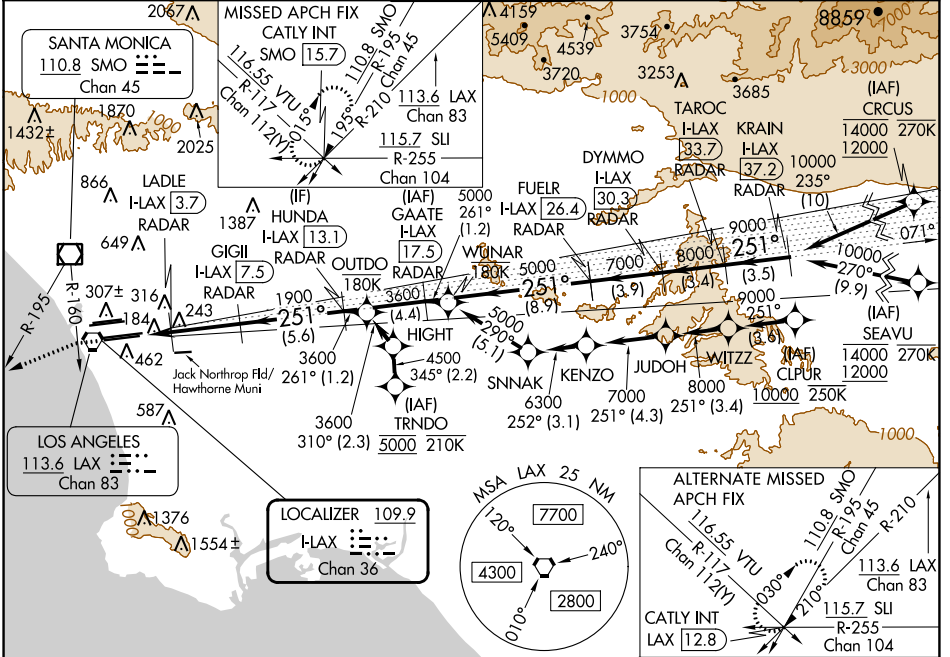
RNP APCH - GPS. From CLIPUR or CRUCU or SEAVU or TRNDO. DME or RADAR required.

Simultaneous approach authorized. Simultaneous approach authorized with HHR.

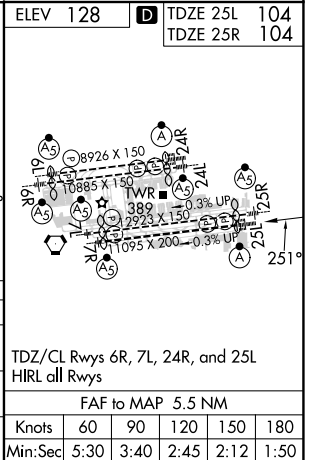


MISSED APPROACH: Climb to 2000 on heading 251° until crossing the SMO R-160, then left turn on heading 236° and on the SMO R-195 to CATLY INT/ SMO 15.7 DME and hold.

D-ATIS	SOCAL APP CON	LOS ANGELES TOWER	GND CON	CLNC DEL	CPDLC
ARR <b>133.8</b>	<b>124.3 363.2</b> (APCH FM WEST)	<b>124.9 269.0</b> (090°-224°)	<b>N 121.65 327.0</b> <b>S 121.75 327.0</b> <b>W 121.4 327.0</b>	<b>120.35</b> <b>327.0</b>	
DEP <b>135.65</b>	<b>124.5 235.975</b> (225°-044°)	<b>128.5 360.7</b> (045°-089°)			



2000	SMO	SMO	CATLY	TAROC	KRAIN
hdg 251°	R-160	R-195	INT	I-LAX	I-LAX
				33.7	37.2
				RADAR	RADAR
	LADLE	GIGLI	HUNDA	FUFLR	DYMMO
	I-LAX	I-LAX	I-LAX	I-LAX	I-LAX
	3.7	7.5	13.1	17.5	26.4
	RADAR	RADAR	RADAR	RADAR	RADAR
					25.1
					10000
					9000
					7000
					8000
					5000
					3600
					1900
					700
					1900
					3600
					5000
					7000
					8000
					10000
					GS 3.00°
					TCH 54
					1 NM 0.8
					3.7 NM
					5.6 NM
					4.4 NM
					8.9 NM
					3.9 NM
					3.4 NM
					3.5 NM
CATEGORY	A	B	C	D	
S-ILS 25L	304/18		200 (200-1/2)		
S-LOC 25L	480/24		376 (400-1/2)		
			480/35		376 (400-3/4)
SIDESTEP 25R	480/55		376 (400-1)		
					480-1 1/2
					376 (400-1 1/2)



SW-3, 26 DEC 2024 to 23 JAN 2025

SW-3, 26 DEC 2024 to 23 JAN 2025