

ORCA FIVE DEPARTURE (RNAV)  
(ORCA5,ORCA) 10SEP20

LOS ANGELES CALIFORNIA  
LOS ANGELES INTL (LAX)

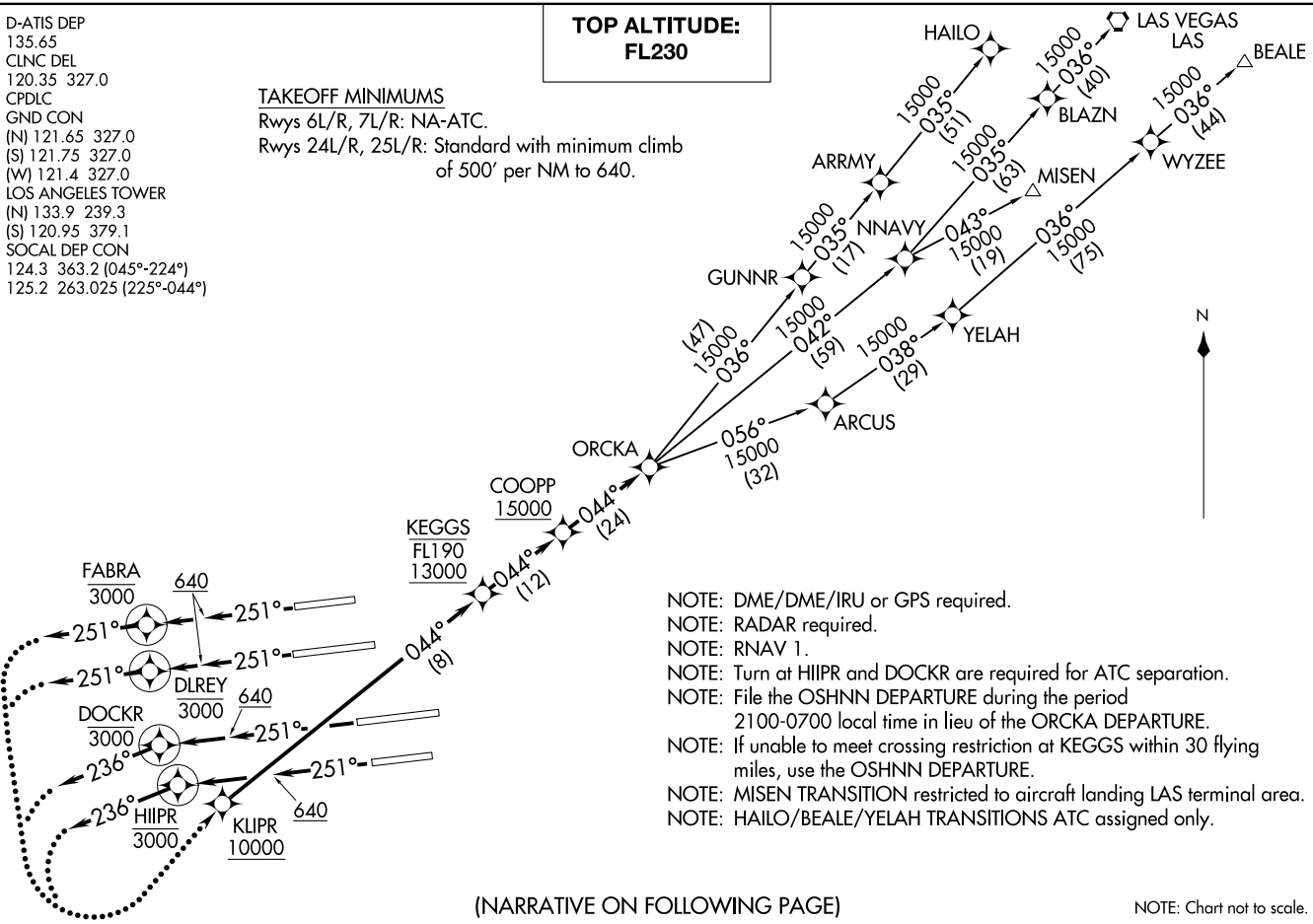
D-ATIS DEP  
135.65  
CLNC DEL  
120.35 327.0  
CPDLC  
GND CON  
(N) 121.65 327.0  
(S) 121.75 327.0  
(W) 121.4 327.0  
LOS ANGELES TOWER  
(N) 133.9 239.3  
(S) 120.95 379.1  
SOCAL DEP CON  
124.3 363.2 (045°-224°)  
125.2 263.025 (225°-044°)

**TOP ALTITUDE:  
FL230**

TAKEOFF MINIMUMS

Rwys 6L/R, 7L/R: NA-ATC.

Rwys 24L/R, 25L/R: Standard with minimum climb  
of 500' per NM to 640.



- NOTE: DME/DME/IRU or GPS required.
- NOTE: RADAR required.
- NOTE: RNAV 1.
- NOTE: Turn at HIIPR and DOCKR are required for ATC separation.
- NOTE: File the OSHNN DEPARTURE during the period 2100-0700 local time in lieu of the ORCA DEPARTURE.
- NOTE: If unable to meet crossing restriction at KEGGS within 30 flying miles, use the OSHNN DEPARTURE.
- NOTE: MISEN TRANSITION restricted to aircraft landing LAS terminal area.
- NOTE: HAILO/BEALE/YELAH TRANSITIONS ATC assigned only.

(NARRATIVE ON FOLLOWING PAGE)

NOTE: Chart not to scale.

ORCA FIVE DEPARTURE (RNAV)  
20254

LOS ANGELES INTL (LAX)  
LOS ANGELES CALIFORNIA

AL-237 (FAA)



DEPARTURE ROUTE DESCRIPTION

TAKEOFF RUNWAY 24L: Climb on heading 251° to 640, then climb direct to cross DLREY at or below 3000, then on heading 251° or as assigned by ATC, expect left turn to cross KLIPR at or above 10000, then on track 044° to cross KEGGS at or above 13000 and at or below FL190, then on track 044° to cross COOPP at or above 15000, then on track 044° to ORCKA, thence. . . .

TAKEOFF RUNWAY 24R: Climb on heading 251° to 640, then climb direct to cross FABRA at or below 3000, then on heading 251° or as assigned by ATC, expect left turn to cross KLIPR at or above 10000, then on track 044° to cross KEGGS at or above 13000 and at or below FL190, then on track 044° to cross COOPP at or above 15000, then on track 044° to ORCKA, thence. . . .

TAKEOFF RUNWAY 25L: Climb on heading 251° to 640, then climb direct to cross HIIPR at or below 3000, then on heading 236° or as assigned by ATC, expect left turn to cross KLIPR at or above 10000, then on track 044° to cross KEGGS at or above 13000 and at or below FL190, then on track 044° to cross COOPP at or above 15000, then on track 044° to ORCKA, thence. . . .

TAKEOFF RUNWAY 25R: Climb on heading 251° to 640, then climb direct to cross DOCKR at or below 3000, then on heading 236° or as assigned by ATC, expect left turn to cross KLIPR at or above 10000, then on track 044° to cross KEGGS at or above 13000 and at or below FL190, then on track 044° to cross COOPP at or above 15000, then on track 044° to ORCKA, thence. . . .

. . . .on (transition). Maintain FL230. Expect filed altitude five minutes after departure.

LOST COMMUNICATIONS: If not in contact with departure control within five minutes after departure, turn left and proceed direct KLIPR Waypoint, climb to FL230 or filed altitude whichever is lower, and when able proceed direct filed or assigned route/fix/transition. Aircraft filing FL240 or above, climb to filed altitude ten minutes after departure.

BEALE TRANSITION (ORCKA5.BEALE)

HAILO TRANSITION (ORCKA5.HAILO)

LAS VEGAS TRANSITION (ORCKA5.LAS)

MISEN TRANSITION (ORCKA5.MISEN)

YELAH TRANSITION (ORCKA5.YELAH)

SW-3, 26 DEC 2024 to 23 JAN 2025

SW-3, 26 DEC 2024 to 23 JAN 2025