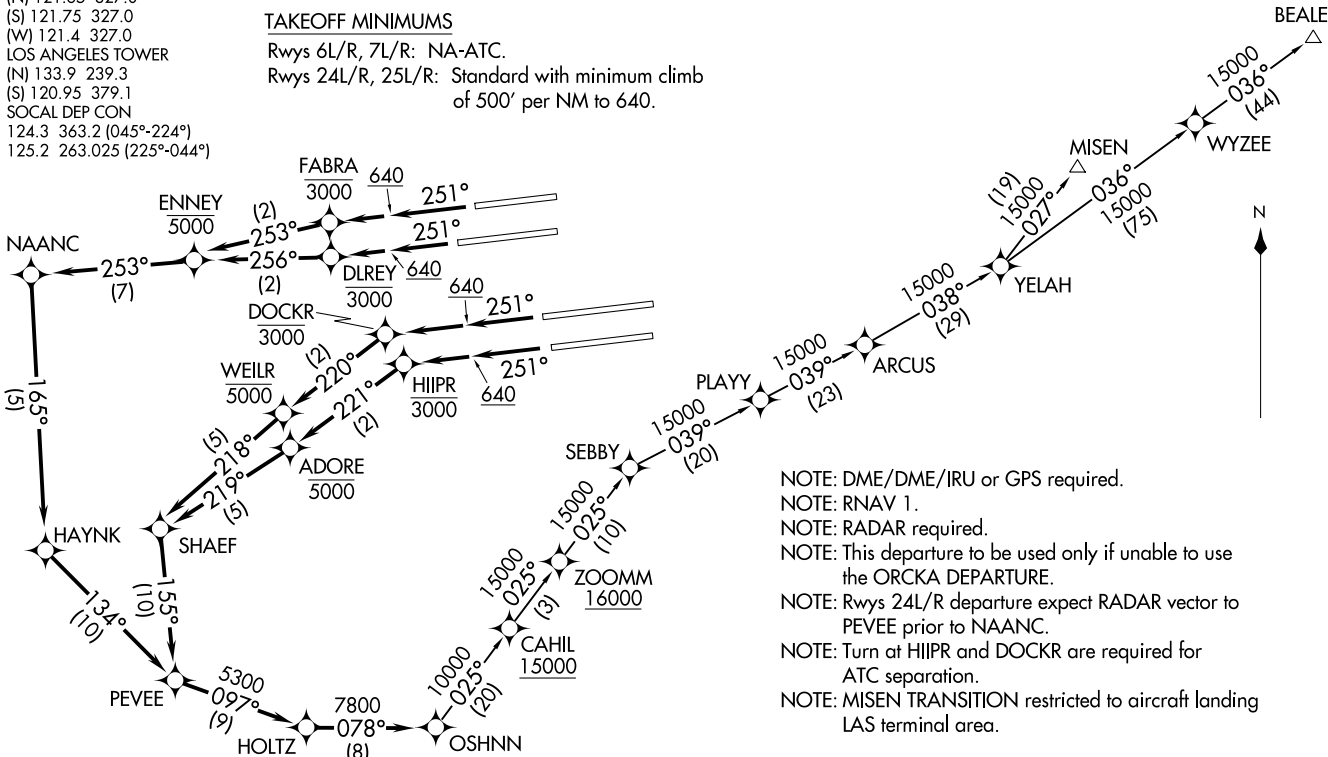


**TOP ALTITUDE:  
17000**

D-ATIS DEP  
135.65  
CLNC DEL  
120.35 327.0  
CPDLC  
GND CON  
(N) 121.65 327.0  
(S) 121.75 327.0  
(W) 121.4 327.0  
LOS ANGELES TOWER  
(N) 133.9 239.3  
(S) 120.95 379.1  
SOCAL DEP CON  
124.3 363.2 (045°-224°)  
125.2 263.025 (225°-044°)

**TAKEOFF MINIMUMS**

Rwys 6L/R, 7L/R: NA-ATC.  
Rwys 24L/R, 25L/R: Standard with minimum climb  
of 500' per NM to 640.



- NOTE: DME/DME/IRU or GPS required.
- NOTE: RNAV 1.
- NOTE: RADAR required.
- NOTE: This departure to be used only if unable to use the ORCA DEPARTURE.
- NOTE: Rwys 24L/R departure expect RADAR vector to PEVEE prior to NAANC.
- NOTE: Turn at HIIPR and DOCKR are required for ATC separation.
- NOTE: MISEN TRANSITION restricted to aircraft landing LAS terminal area.

(NARRATIVE ON FOLLOWING PAGE)

NOTE: Chart not to scale.

OSHHN ONE DEPARTURE (RNAV)  
(OSHHN1 .OSHHN) 17JUN21

LOS ANGELES, CALIFORNIA  
LOS ANGELES INTL (LAX)

(OSHHN1 .OSHHN) 21168  
OSHHN ONE DEPARTURE (RNAV)

AL-237 (FAA)

LOS ANGELES INTL (LAX)  
LOS ANGELES, CALIFORNIA



DEPARTURE ROUTE DESCRIPTION

TAKEOFF RUNWAY 24L: Climb on heading 251° to 640, then climb direct to cross DLREY at or below 3000, then on track 256° to cross ENNEY at or below 5000, then on depicted route to OSHNN, thence. . . .

TAKEOFF RUNWAY 24R: Climb on heading 251° to 640, then climb direct to cross FABRA at or below 3000, then on track 253° to cross ENNEY at or below 5000, then on depicted route to OSHNN, thence. . . .

TAKEOFF RUNWAY 25L: Climb on heading 251° to 640, then climb direct to cross HIIPR at or below 3000, then on track 221° to cross ADORE at or below 5000, then on depicted route to OSHNN, thence. . . .

TAKEOFF RUNWAY 25R: Climb on heading 251° to 640, then climb direct to cross DOCKR at or below 3000, then on track 220° to cross WEILR at or below 5000, then on depicted route to OSHNN, thence. . . .

. . . .on (transition). Maintain 17000. Expect filed altitude five minutes after departure.

BEALE TRANSITION (OSHNN1.BEALE)

MISEN TRANSITION (OSHNN1.MISEN)

SW-3, 26 DEC 2024 to 23 JAN 2025

SW-3, 26 DEC 2024 to 23 JAN 2025