

RNAV (RNP) Z RWY 24R

LOS ANGELES INTL (LAX)

APP CRS	Rwy Idg	8926
251°	TDZE	122
	Apt Elev	128

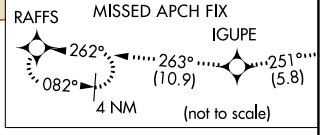
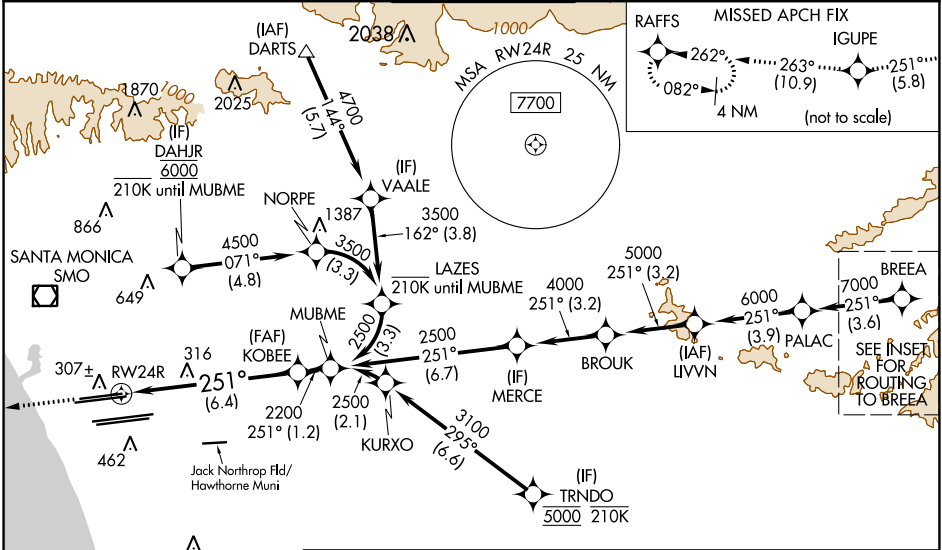
RNP AR APCH-GPS.

Simultaneous approach authorized with HHR. For uncompensated Baro-VNAV systems, procedure NA below 5°C or above 54°C. For inop ALS, increase RNP 0.15 all Cats visibility to RVR 6000 and RNP 0.30 all Cats visibility to 1½ SM. Simultaneous approach authorized.

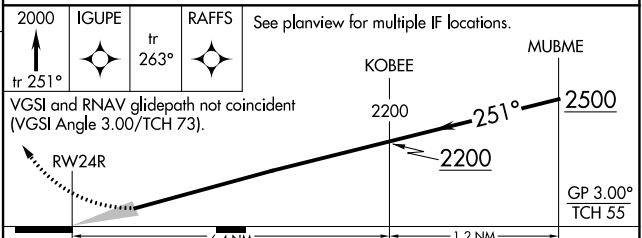
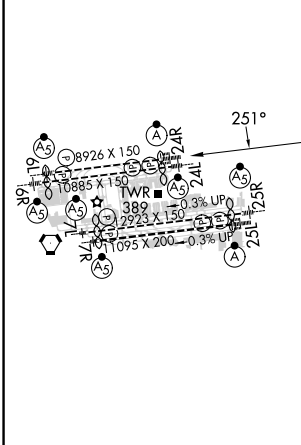
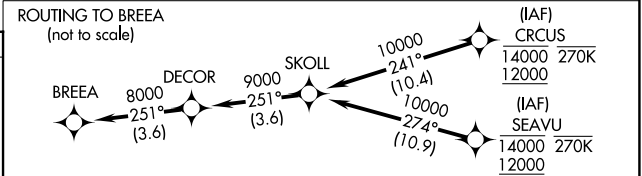
ALSF-2

MISSED APPROACH: Climb to 2000 on track 251° to IGUPE and track 263° to RAFFS and hold.

D-ATIS ARR 133.8 DEF 135.65	SOCAL APP CON (APCH FM WEST) 124.3 363.2 124.5 235.975 (225°-044°)	124.9 269.0 (090°-224°) 128.5 360.7 (045°-089°)	LOS ANGELES TOWER N 133.9 239.3 S 120.95 379.1	GND CON N 121.65 327.0 S 121.75 327.0 W 121.4 327.0	CLNC DEL 120.35 327.0	CPDLC
---	--	--	---	---	---	-------



ELEV 128	D	TDZE 122
----------	----------	----------



CATEGORY	A	B	C	D
RNP 0.15 DA		484/40	362 (400-¾)	
RNP 0.30 DA		586/60	464 (500-1½)	

TDZ/CL Rwy 6r, 7L, 24R, and 25L
HIRL all Rwys

AUTHORIZATION REQUIRED

SW-3, 26 DEC 2024 to 23 JAN 2025

SW-3, 26 DEC 2024 to 23 JAN 2025