

LOM LK	APP CRS	Rwy Idg	3125
414	348°	TDZE	546
		Apt Elev	546

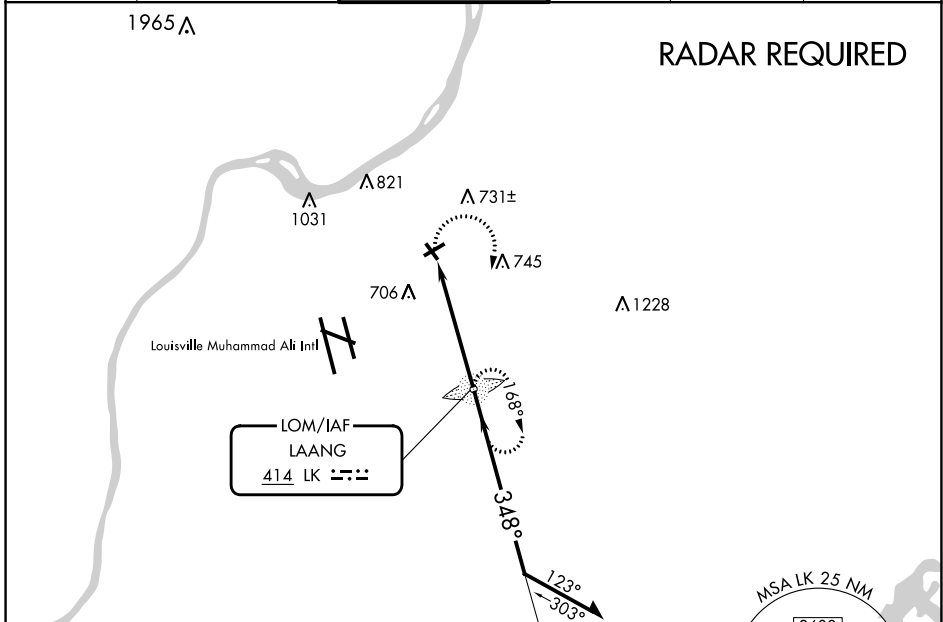
NDB RWY 33

BOWMAN FLD (LOU)

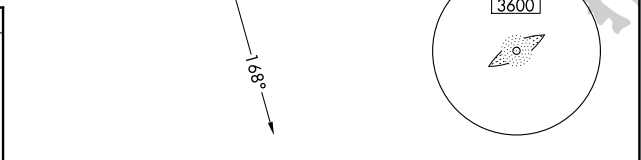
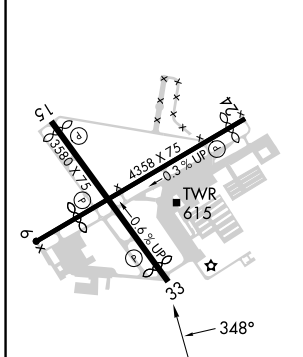
⚠ When local altimeter setting not received, use Louisville Muhammad Ali Intl altimeter setting. Rwy 33 helicopter visibility reduction below 1 SM NA. Straight-in Rwy 33 NA at night, Circling Rwy 6, 15, 33 NA at night.

MISSED APPROACH: Climbing right turn to 2500 reduction below LAANG LOM and hold.

ATIS 124.15	LOUISVILLE APP CON 132.075 327.0	BOWMAN TOWER★ 119.5 (CTAF) 257.625	GND CON 121.8	CLNC DEL 118.9	UNICOM 122.95
-----------------------	--	--	-------------------------	--------------------------	-------------------------



ELEV 546	D	TDZE 546
----------	----------	----------



2500	LK	LAANG LOM	Remain within 10 NM
		2500	
		2200	
		4.9 NM	

CATEGORY	A	B	C	D
S-33	1160-1	614 (700-1)	NA	
C CIRCLING	1160-1	614 (700-1)	NA	

SE-1, 26 DEC 2024 to 23 JAN 2025

SE-1, 26 DEC 2024 to 23 JAN 2025