

LOC/DME I-JJM 110.55 Chan 42 (Y)	APP CRS 350°	Rwy Idg TDZE Apt Elev	7800 479 501
--	------------------------	-----------------------------	---

ILS RWY 35R (SA CAT I)

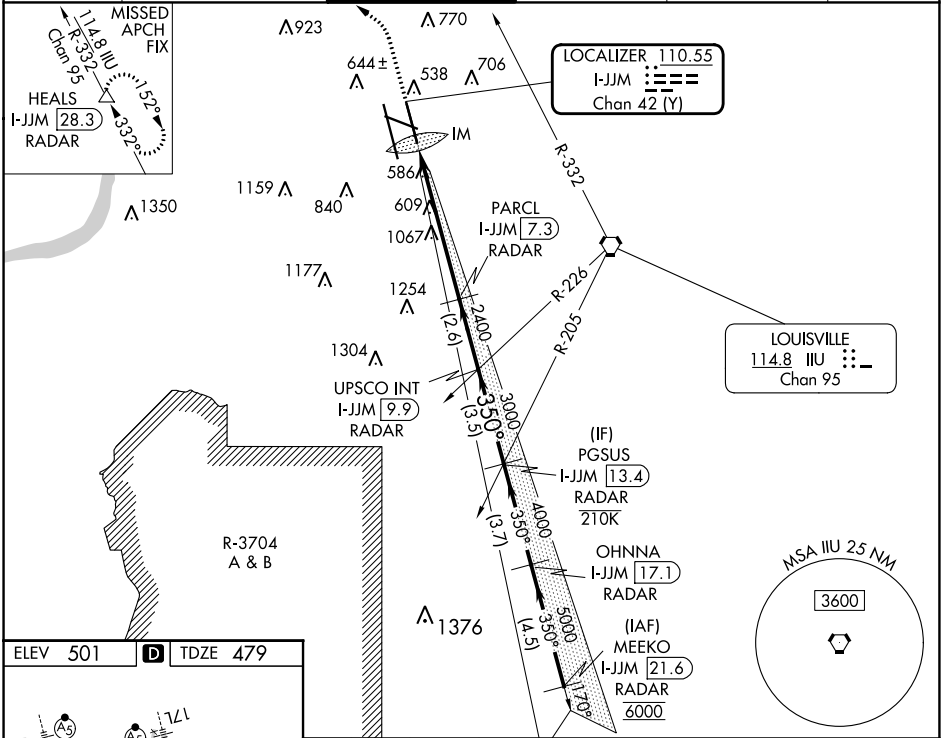
LOUISVILLE MUHAMMAD ALI INTL (SDF')

Simultaneous approach authorized. Requires specific OPSPEC, MSPEC, or LOA approval.

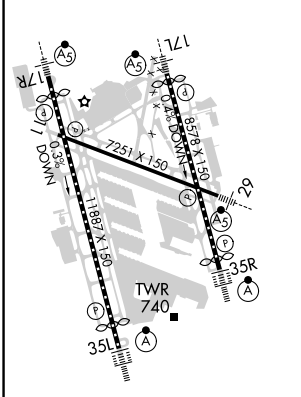


MISSED APPROACH: Climb to 2500 then climbing left turn to 4000 on heading 350° and on IIL VORTAC R-332 to HEALS/28.3 DME/RADAR and hold.

D-ATIS 118.725	LOUISVILLE APP CON 132.075 327.0	LOUISVILLE TOWER 124.2 257.8	GND CON 121.7 348.6	CLNC DEL 126.1 275.8	CPDLC
--------------------------	--	--	-------------------------------	--------------------------------	-------



ELEV 501	D	TDZE 479
----------	----------	----------



2500	4000	IIL R-332	HEALS	VGSI and ILS glidepath not coincident (VGSI Angle 3.00/TCH 71).	PGSUS I-JJM 13.4 RADAR
hdg 350°				PARCL I-JJM 7.3 RADAR	UPSCO INT I-JJM 9.9 RADAR
				2400	3000
				2400	3000
				5.9 NM	2.6 NM
				3.5 NM	
CATEGORY	A	B	C	D	
S-ILS 35R	RA 162/14 150 DA 629				

SA CATEGORY I ILS- SPECIAL AIRCREW & AIRCRAFT CERTIFICATION REQUIRED

SE-1, 26 DEC 2024 to 23 JAN 2025

SE-1, 26 DEC 2024 to 23 JAN 2025