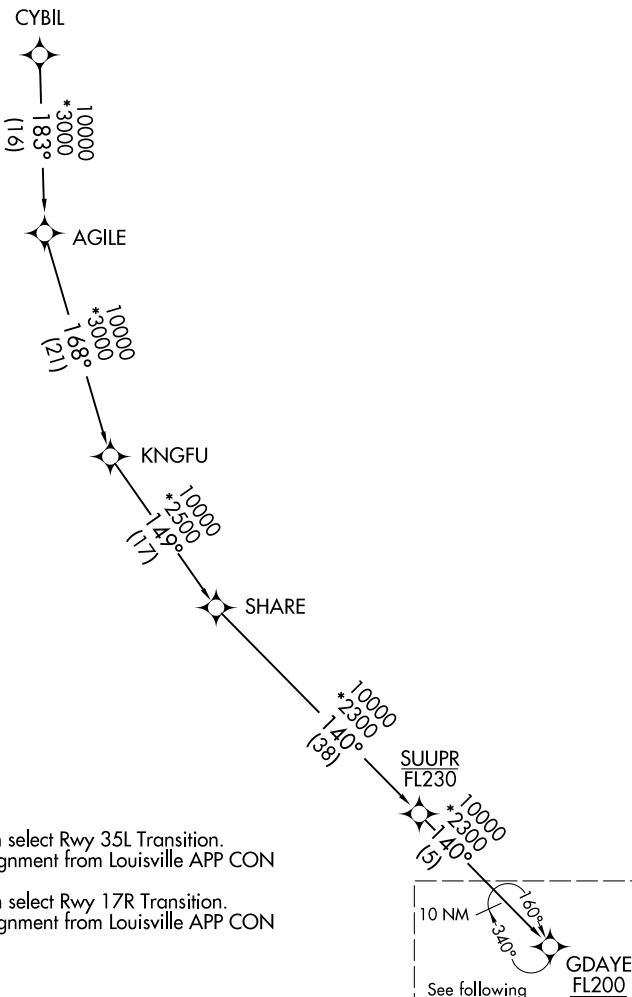


JMONY ONE ARRIVAL (RNAV) Transition Routes

LOUISVILLE, KENTUCKY

LOUISVILLE APP CON
 132.075 327.0
 SDF D-ATIS
 118.725
 LOU ATIS
 124.15

RNAV 1 - DME/DME/IRU or GPS.
 RADAR required.



- NOTE: Jet aircraft only.
- NOTE: KSDf landing north select Rwy 35L Transition. Expect runway assignment from Louisville APP CON prior to LISZA.
- NOTE: KSDf landing south select Rwy 17R Transition. Expect runway assignment from Louisville APP CON prior to LISZA.

10 NM
 See following page for Arrival Routes
 GDAYE FL200

NOTE: Chart not to scale.

(CONTINUED ON FOLLOWING PAGE)

CYBIL TRANSITION (CYBIL.JMONY1)
 SHARE TRANSITION (SHARE.JMONY1)

SE-1, 26 DEC 2024 to 23 JAN 2025

SE-1, 26 DEC 2024 to 23 JAN 2025

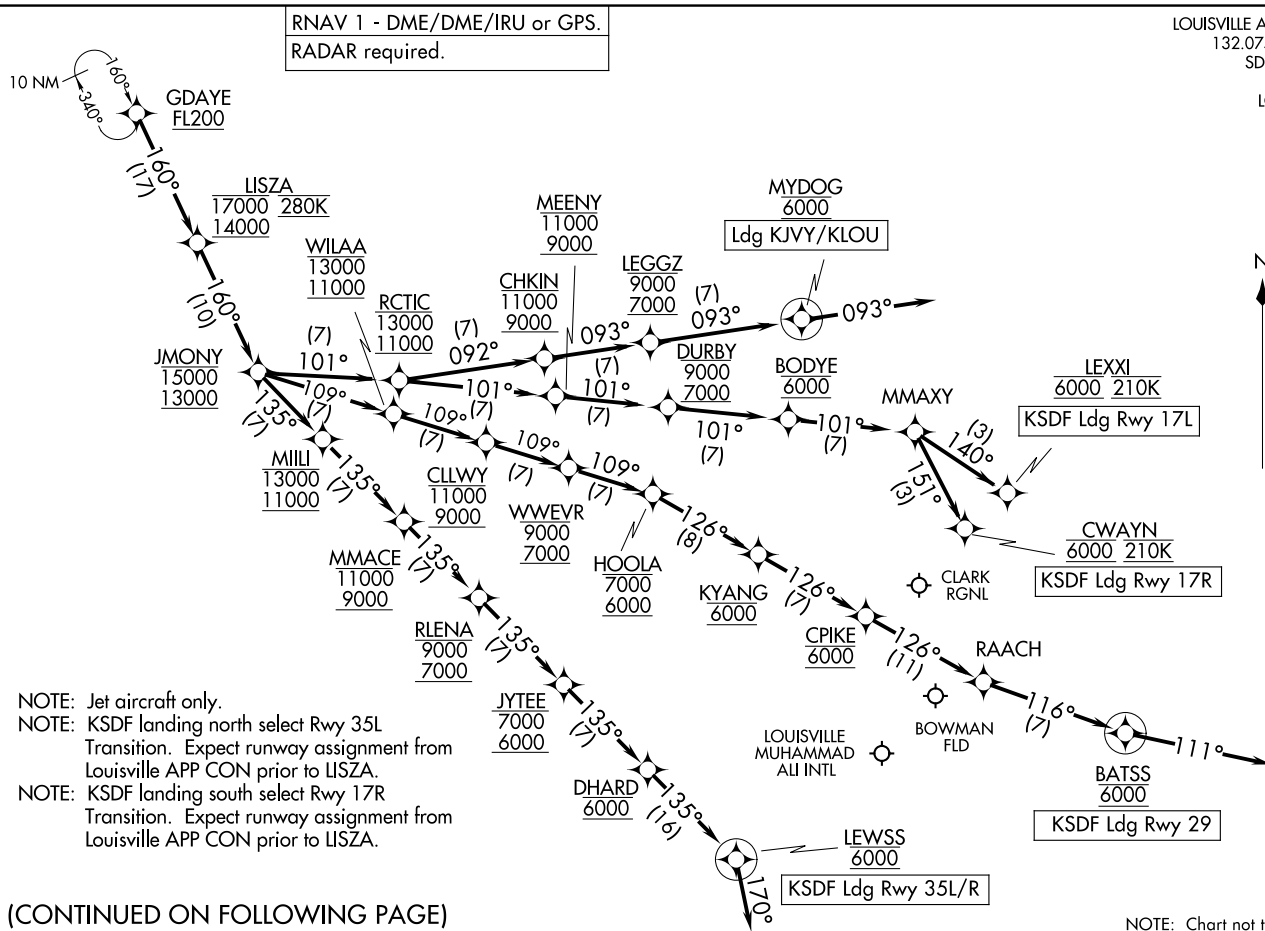
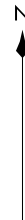
RNAV 1 - DME/DME/IRU or GPS.
RADAR required.

LOUISVILLE APP CON
132.075 327.0
SDF D-ATIS
118.725
LOU ATIS
124.15

(GDAYE:JMONT1) 24193

AL-239 (FAA)

LOUISVILLE, KENTUCKY



NOTE: Jet aircraft only.
 NOTE: KSDf landing north select Rwy 35L Transition. Expect runway assignment from Louisville APP CON prior to LISZA.
 NOTE: KSDf landing south select Rwy 17R Transition. Expect runway assignment from Louisville APP CON prior to LISZA.

(CONTINUED ON FOLLOWING PAGE)

NOTE: Chart not to scale.

JMONY ONE ARRIVAL (RNAV) Arrival Routes
(GDAYE:JMONT1) 11 JUL 24

LOUISVILLE, KENTUCKY

ARRIVAL ROUTE DESCRIPTION

KSDF: From GDAYE on track 160° to cross LISZA between 14000 and 17000 and at 280K, then on track 160° to cross JMONY between 13000 and 15000.

LANDING KSDF RUNWAY 17L: From JMONY on track 101° to cross RCTIC between 11000 and 13000, then on track 101° to cross MEENY between 9000 and 11000, then on track 101 to cross DURBY between 7000 and 9000, then on track 101° to cross BODYE at 6000, then on track 101° to MMAXY, then on track 140° to cross LEXXI at 6000 and at 210K. Expect ILS or LOC Rwy 17L approach.

LANDING KSDF RUNWAY 17R: From JMONY on track 101° to cross RCTIC between 11000 and 13000, then on track 101° to cross MEENY between 9000 and 11000, then on track 101° to cross DURBY between 7000 and 9000, then on track 101° to cross BODYE at 6000, then on track 101° to MMAXY, then on track 151° to cross CWAYN at 6000 and at 210K. Expect ILS or LOC Rwy 17R approach.

LANDING KSDF RUNWAY 29: From JMONY on track 109° to cross WILAA between 11000 and 13000, then on track 109° to cross CLLWY between 9000 and 11000, then on track 109° to cross WWEVR between 7000 and 9000, then on track 109° to cross HOOLA between 6000 and 7000, then on track 126° to cross KYANG at 6000, then on track 126° to cross CPIKE at 6000, then on track 126° to RAACH, then on track 116° to cross BATSS at 6000, then on track 111°. Expect RADAR vectors to final approach course.

LANDING KSDF RUNWAYS 35L/R: From JMONY on track 135° to cross MILLI between 11000 and 13000, then on track 135° to cross MMACE between 9000 and 11000, then on track 135° to cross RLENA between 7000 and 9000, then on track 135° to cross JYTEE between 6000 and 7000, then on track 135° to cross DHARD at 6000, then on track 135° to cross LEWSS at 6000, then on track 170°. Expect RADAR vectors to final approach course.

LANDING KJVY/KLOU: From GDAYE on track 160° to cross LISZA between 14000 and 17000 and at 280K, then on track 160° to cross JMONY between 13000 and 15000, then on track 101° to cross RCTIC between 11000 and 13000, then on track 092° to cross CHKIN between 9000 and 11000, then on track 093° to cross LEGGZ between 7000 and 9000, then on track 093° to cross MYDOG at 6000, then on track 093°. Expect RADAR vectors to final approach course.