


# LOC RWY 29

LOUISVILLE MUHAMMAD ALI INTL (SDF')

LOC I-LKS <b>109.1</b>	APP CRS <b>297°</b>	Rwy Idg TDZE Apt Elev <b>7250</b> <b>480</b> <b>501</b>
---------------------------	------------------------	--

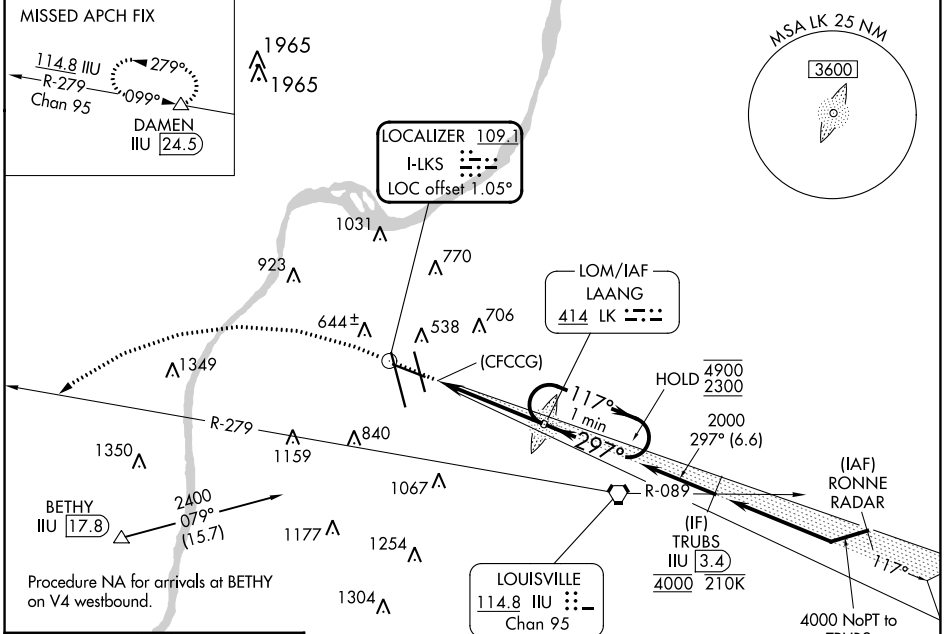
**RADAR required. ADF or DME required.**

**⚠** Circling Rwy 11 NA at night. Rwy 29 helicopter visibility reduction below RVR 4000 NA. For inop ALS, increase S-29 visibility Cats A/B to RVR 5500 and Cats C/D to 1½ SM.

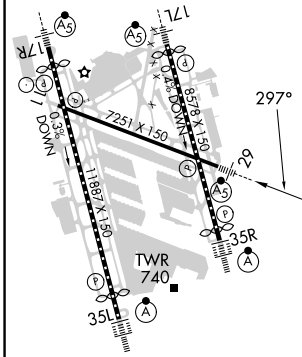
**MALSR** 

**MISSED APPROACH:** Climb to 1100 then climbing left turn to 4000 heading 268° and on ILL VORTAC R-279 to DAMEN and hold.

D-ATIS <b>118.725</b>	LOUISVILLE APP CON <b>132.075 327.0</b>	LOUISVILLE TOWER <b>124.2 257.8</b>	GND CON <b>121.7 348.6</b>	CLNC DEL <b>126.1 275.8</b>	CPDLC
--------------------------	--	--	-------------------------------	--------------------------------	-------



ELEV 501	<b>D</b>	TDZE 480
----------	----------	----------



**R-3704 A & B**

1100

4000

hdg 268°

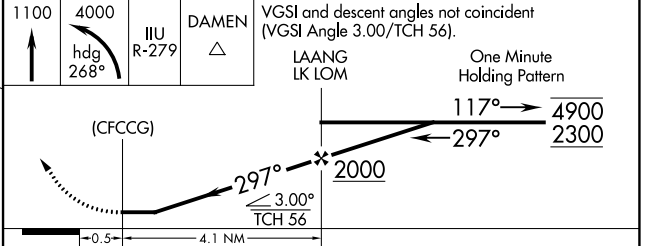
ILL R-279

DAMEN  $\triangle$

VGSI and descent angles not coincident (VGSI Angle 3.00/TCH 56).

LAANG LK LOM

One Minute Holding Pattern



	A	B	C	D
S-29	1060/40	580 (600-¾)	1060-1¼	580 (600-1¼)
<b>C</b> CIRCLING	1060-1 559 (600-1)	1140-1 639 (700-1)	1160-1¾ 659 (700-1¾)	1400-3 899 (900-3)

# LOC RWY 29

SE-1, 26 DEC 2024 to 23 JAN 2025

SE-1, 26 DEC 2024 to 23 JAN 2025