

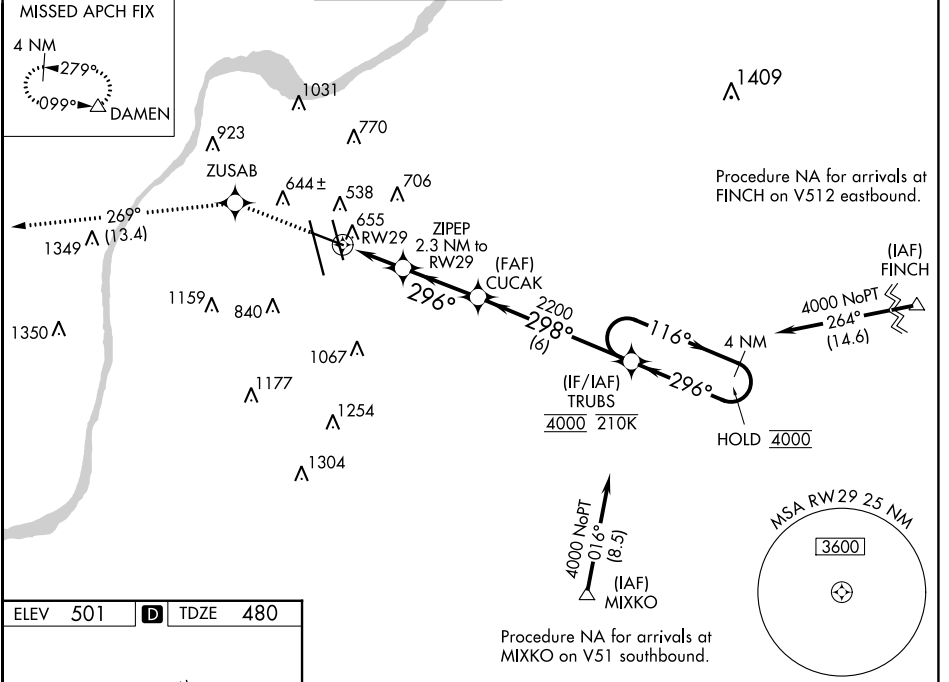
WAAS CH <b>93643</b> <b>W29A</b>	APP CRS <b>296°</b>	Rwy Idg <b>7250</b> TDZE <b>480</b> Apt Elev <b>501</b>
--	------------------------	---

# RNAV (GPS) Y RWY 29

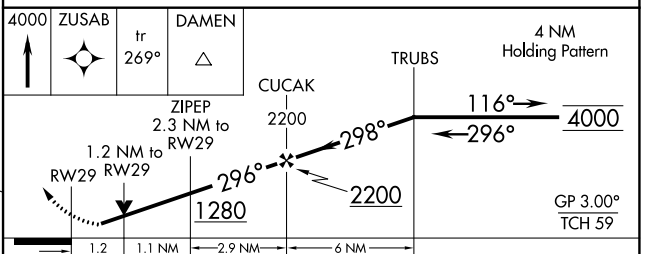
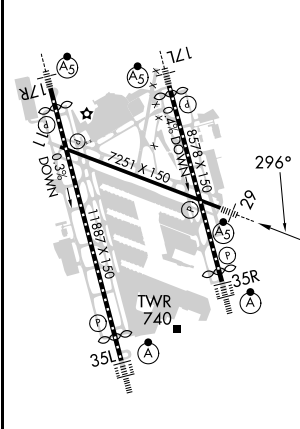
LOUISVILLE MUHAMMAD ALI INTL (SDF)

RNP APCH - GPS.		MALSRL
<p>▼ Rwy 29 helicopter visibility reduction below RVR 4000 NA. Circling Rwy 11 NA at night. For uncompensated Baro-VNAV systems, LNAV/VNAV NA below -13°C or above 54°C. For inop ALS, increase LPV all Cats visibility to RVR 4500 and LNAV Cats A/B visibility to RVR 5500.</p>		<p>MISSED APPROACH: Climb to 4000 direct ZUSAB and on track 269° to DAMEN and hold.</p>

D-ATIS <b>118.725</b>	LOUISVILLE APP CON <b>132.075 327.0</b>	LOUISVILLE TOWER <b>124.2 257.8</b>	GND CON <b>121.7 348.6</b>	CLNC DEL <b>126.1 275.8</b>	CPDLC
--------------------------	--	--	-------------------------------	--------------------------------	-------



ELEV 501	<b>D</b>	TDZE 480
----------	----------	----------



CATEGORY	A	B	C	D
LPV DA		761/40	281 (300-¾)	
LNAV/VNAV DA		920/40	440 (500-¾)	
LNAV MDA		920/40	440 (500-¾)	
<b>C</b> CIRCLING	1040-1 539 (600-1)	1140-1 639 (700-1)	1160-1¾ 659 (700-1¾)	1400-3 899 (900-3)

HIRL all Rwys  
TDZ/CL Rwys 17L, 17R, 35L and 35R

SE-1, 26 DEC 2024 to 23 JAN 2025

SE-1, 26 DEC 2024 to 23 JAN 2025