

LUBBOCK, TEXAS

HI-ILS or LOC RWY 17R

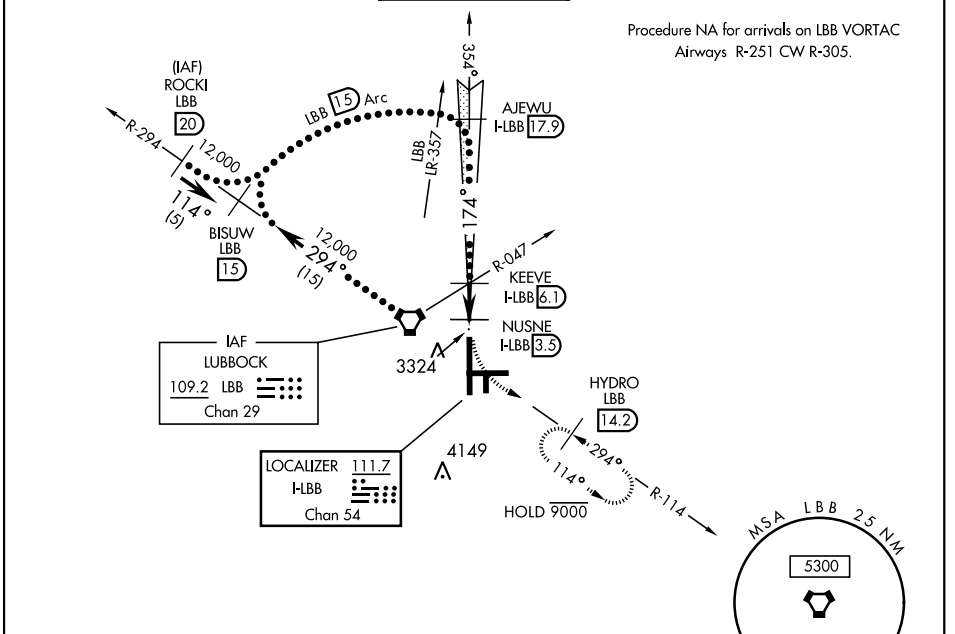
LOC I-LBB 111.7 Chan 54	APCH CRS 174°	Rwy Ildg 11 500 TDZE 3282 Arprt Elev 3282
---	-------------------------	--

AL-241 [USAF]

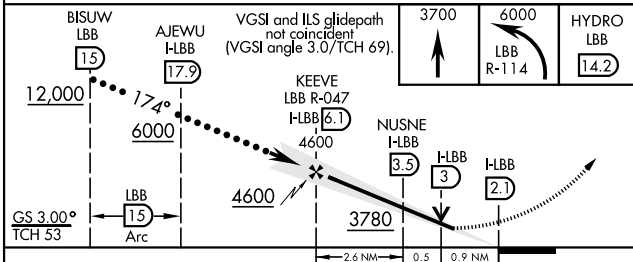
LUBBOCK PRESTON SMITH INTL (KLBB)

DME or RADAR required.	MALS R (A5)	MISSED APPROACH: Climb to 3700, then climbing left turn to 6000 via LBB VORTAC R-114 to HYDRO (LBB 14.2 DME) and hold, continue climb in hold to 6000.
<p>▼ * When ALS inop, increase CAT E RVR to 40.</p> <p>▲ ** When ALS inop, increase CAT CDE vis to 1 3/8 mile.</p> <p>▲ *** When ALS inop, increase CAT CDE RVR to 50.</p>		

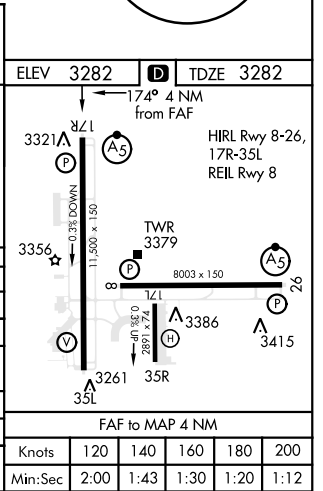
ATIS 125.3 270.275	APP CON 119.2 351.8	TOWER 120.5 239.3	GND CON 121.9 348.6	CLNC DEL 125.8 281.55
------------------------------	-------------------------------	-----------------------------	-------------------------------	---------------------------------



EMERG SAFE ALT 100 NM 7300



CATEGORY	C	D	E
S-ILS 17R *	3482/24	200 (200-1/2)	
S-LOC 17R **	3780/50	498 (500-1)	
CIRCLING	3880-1 1/2 598 (600-1 1/2)	3940-2 658 (700-2)	4100-3 818 (900-3)
	NUSNE DME FIX MINIMUMS		
S-LOC 17R ***	3620/26	338 (400-3/4)	
CIRCLING	3880-1 1/2 598 (600-1 1/2)	3940-2 658 (700-2)	4100-3 818 (900-3)



LUBBOCK, TEXAS

33°40'N-101°49'W

LUBBOCK PRESTON SMITH INTL (KLBB)

Amtd 2 02FEB17

HI-ILS or LOC RWY 17R

SC-2, 26 DEC 2024 to 23 JAN 2025

SC-2, 26 DEC 2024 to 23 JAN 2025