

LOC I-MCN	APP CRS	Rwy Idg	6221
109.5	054°	TDZE	344
		Apt Elev	354

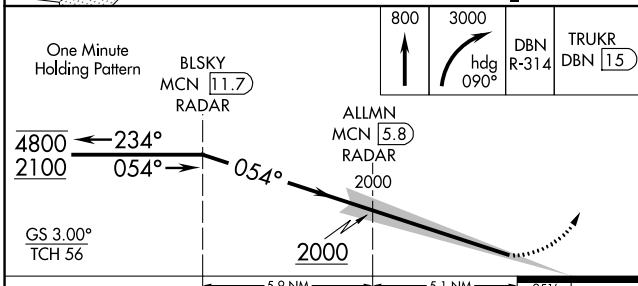
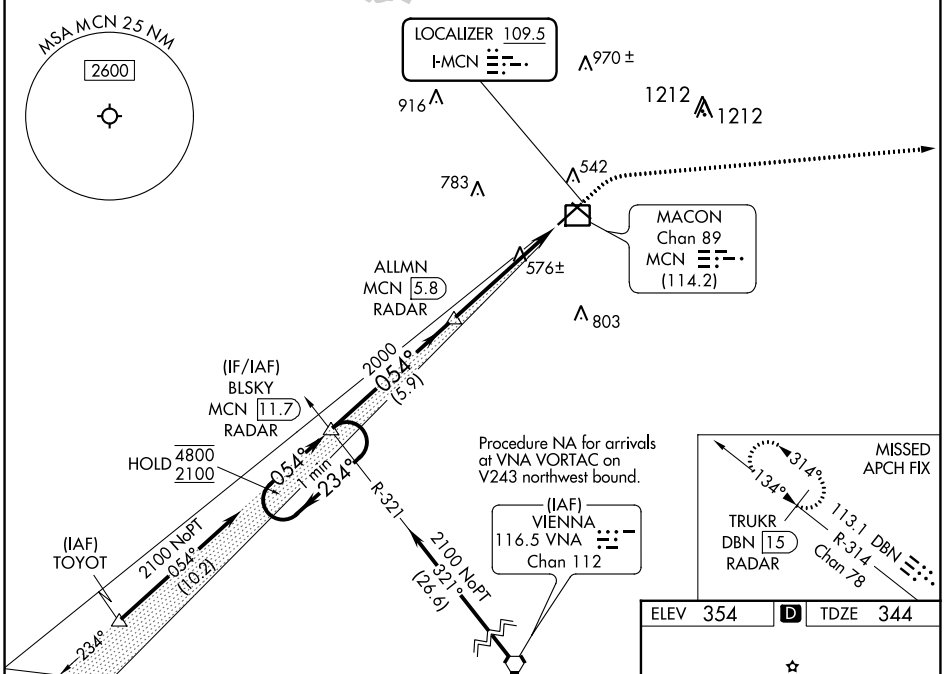
ILS RWY 5 (SA CAT I & II)

MIDDLE GEORGIA RGNL (MCN)

DME and RADAR required.

MALS MISSED APPROACH: Climb to 800 then climbing right turn to 3000 on heading 090° and DBN VORTAC R-314 to TRUKR/DBN VORTAC 15 DME/RADAR and hold.

ATIS 120.775	ATLANTA APP CON ★ 124.2 279.6	MACON TOWER ★ 128.2 (CTAF) 257.8	GND CON 121.65	UNICOM 122.95
------------------------	---	--	--------------------------	-------------------------



ELEV 354	D	TDZE 344
----------	---	----------

TWR 456

14

23

32

32

6500 X 150

5000 X 150

0.4% UP

HIRL Rwy 5-23

MIRL Rwy 14-32

REIL Rwy 23 and 32

CATEGORY	A	B	C	D
S-ILS 5	SA CAT I	RA 216/14	150 DA 494	
S-ILS 5	SA CAT II	RA 151/12	100 DA 444	

SA CATEGORY I & II ILS - SPECIAL AIRCREW & AIRCRAFT CERTIFICATION REQUIRED

SE-4, 26 DEC 2024 to 23 JAN 2025

SE-4, 26 DEC 2024 to 23 JAN 2025