

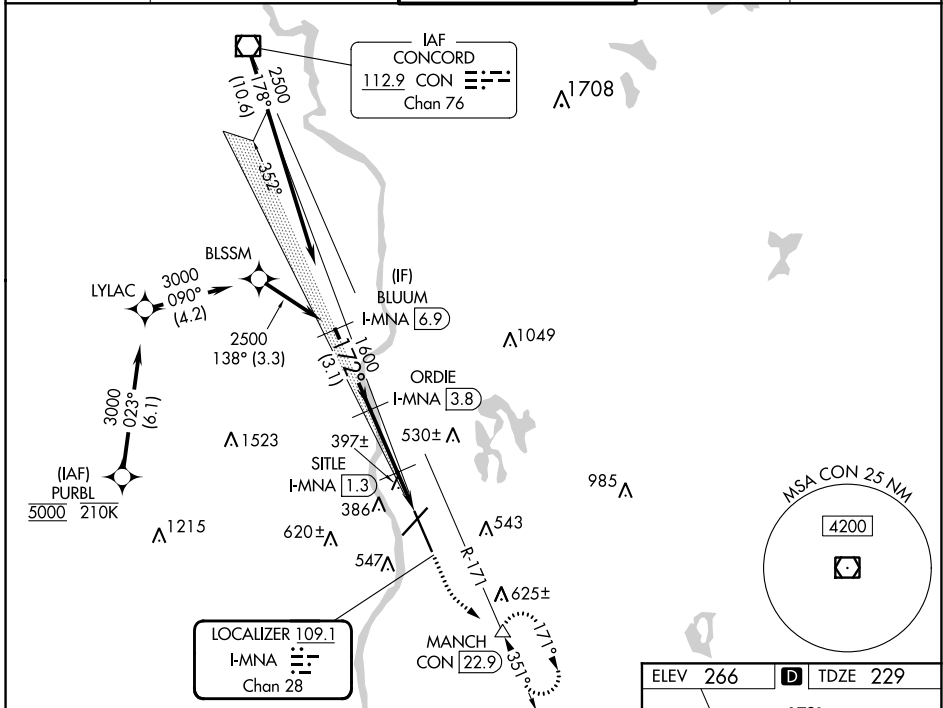
LOC/DME I-MNA 109.1 Chan 28	APP CRS 172°	Rwy ldg 8914 TDZE 229 Apt Elev 266
--	------------------------	---

ILS or LOC RWY 17

MANCHESTER BOSTON RGNL (MHT)

RNP APCH - GPS. From PURBL. DME required.	MALSR 	MISSED APPROACH: Climb to 900 then climbing left turn to 2100 on heading 145° and on CON VOR/DME R-171 to MANCH/CON 22.9 DME and hold, continue climb-in-hold to 2100.
--	-----------	--

ATIS 119.55	BOSTON APP CON 124.9 269.075	MANCHESTER TOWER 121.3 239.025	GND CON 121.9	CLNC DEL 135.9
-----------------------	--	--	-------------------------	--------------------------



NE-1, 26 DEC 2024 to 23 JAN 2025

NE-1, 26 DEC 2024 to 23 JAN 2025

VGSI and ILS glidepath not coincident (VGSI Angle 3.10/TCH 67). BLUUM I-MNA (6.9)				
900 2100 hdg 145°		CON R-171	MANCH	
2500 → 172° → 1600 → 780 ORDIE I-MNA (3.8) SITLE I-MNA (1.3) I-MNA DME ANTENNA I-MNA (0.3)				
3.1 NM		2.5 NM	1.6 NM	
CATEGORY	A	B	C	D
S-ILS 17	429/18		200 (200-½)	
S-LOC 17	660/24	431 (400-½)	660/40	431 (400-¾)
CIRCLING	880-1	614 (700-1)	980-2 714 (800-2)	1100-2¾ 834 (900-2¾)

