


LOC I-EXW <b>108.3</b>	APP CRS <b>259°</b>	Rwy Idg <b>7815</b>
		TDZE <b>548</b>
		Apt Elev <b>565</b>

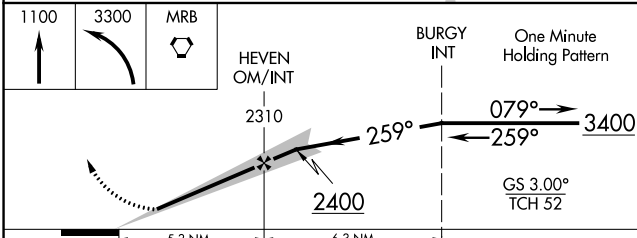
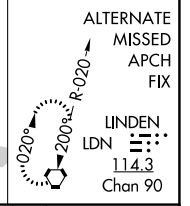
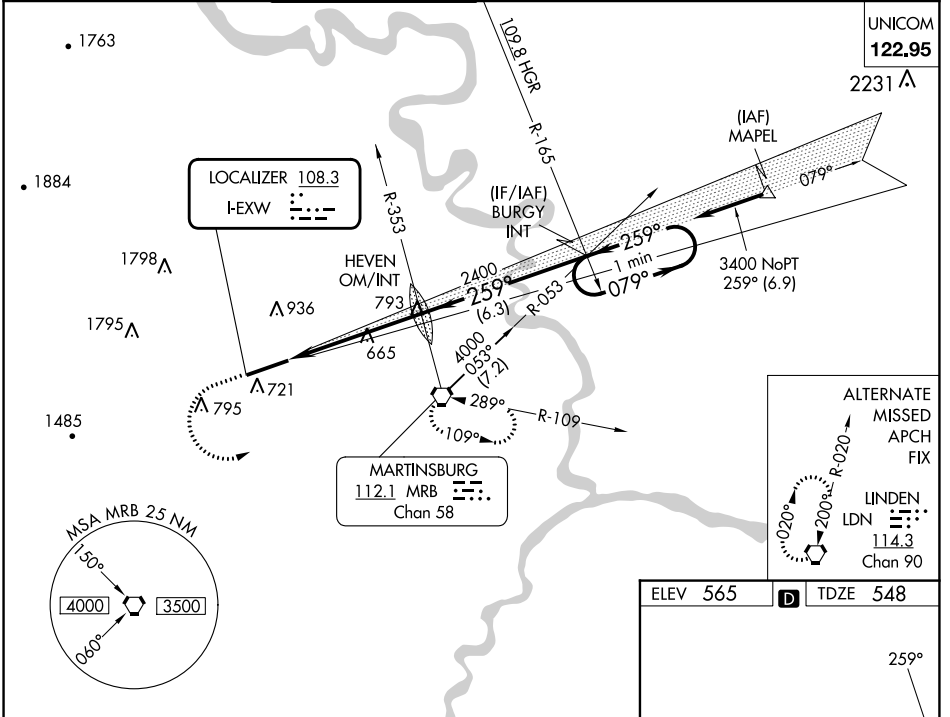
# ILS or LOC RWY 26




EASTERN WV RGNL/SHEPHERD FLD (MRB)

**⚠** For inoperative MALS/R, increase S-ILS 26 Cat E visibility to ¾ mile and S-LOC 26 Cat E visibility to 1¼ mile. When local altimeter setting not received, use Hagerstown altimeter setting and increase all DA 70 feet and all MDA 80 feet; increase S-LOC 26 Cat C, D, E and Circling Cat C and D visibility ¼ mile. For inoperative MALS/R when using Hagerstown altimeter setting increase S-ILS 26 visibility all Cats to 1 mile and S-LOC 26 Cat E visibility to 1½ mile.

**MALS/R**  
  
**MISSED APPROACH:** Climb to 1100 then climbing left turn to 3300 direct MRB VORTAC and hold, continue climb-in-hold to 3300.

ASOS <b>119.925</b>	POTOMAC APP CON <b>126.825 239.025</b>	MARTINSBURG TOWER * <b>124.3 (CTAF) 233.7</b>	GND CON <b>121.8 257.65</b>	CLNC DEL <b>121.8 257.65</b>	CLNC DEL <b>132.075 269.075</b> (When twr closed)
------------------------	---	--	--------------------------------	---------------------------------	---



ELEV 565	<b>D</b> TDZE 548												
 TWR  8815 X 150  622													
REIL Rwy 8 <b>1</b>													
HIRL Rwy 8-26 <b>1</b>													
FAF to MAP 5.3 NM													
CIRCLING	<table border="1"> <tr> <td>Knots</td> <td>60</td> <td>90</td> <td>120</td> <td>150</td> <td>180</td> </tr> <tr> <td>Min:Sec</td> <td>5:18</td> <td>3:32</td> <td>2:39</td> <td>2:07</td> <td>1:46</td> </tr> </table>	Knots	60	90	120	150	180	Min:Sec	5:18	3:32	2:39	2:07	1:46
Knots	60	90	120	150	180								
Min:Sec	5:18	3:32	2:39	2:07	1:46								

CATEGORY	A	B	C	D	E
S-ILS 26	748-½ 200 (200-½)				
S-LOC 26	920-½ 372 (400-½)		920-¾ 372 (400-¾)		
<b>C</b> CIRCLING	1100-1 535 (600-1)	1240-1 675 (700-1)	1240-2 675 (700-2)	1260-2¼ 695 (700-2¼)	2140-3 1575 (1600-3)

# ILS or LOC RWY 26

NE-4, 26 DEC 2024 to 23 JAN 2025

NE-4, 26 DEC 2024 to 23 JAN 2025