


LOC/DME I-RRU 111.3 Chan 50	APP CRS 269°	Rwy Idg TDZE 8175 862 Apt Elev 869
--	------------------------	--

ILS or LOC RWY 27

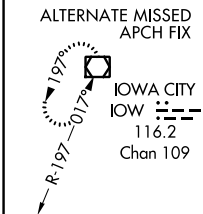
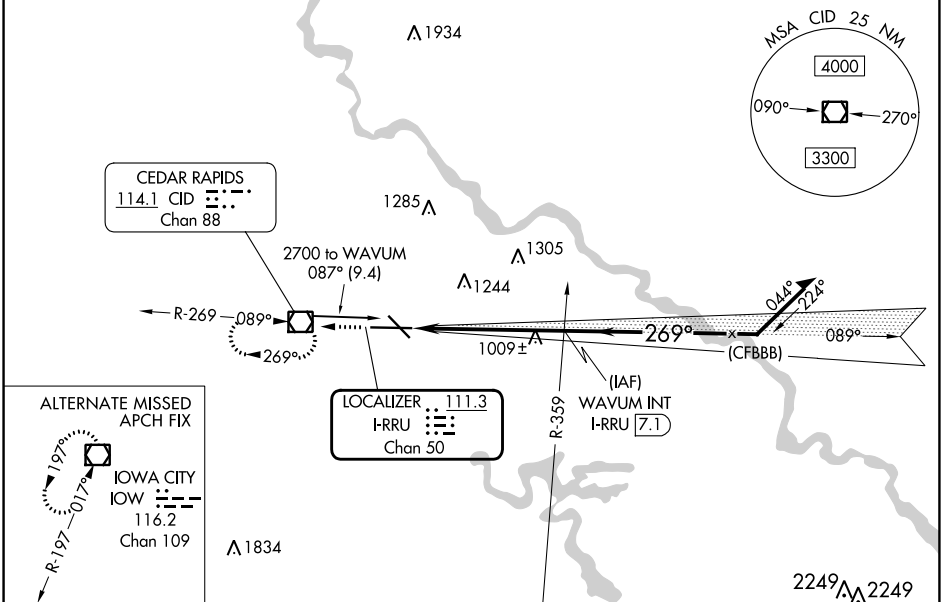
THE EASTERN IOWA (CID)

⚠ VDP NA with Iowa City altimeter setting. Autopilot coupled approach NA below 1910.
⚠ When local altimeter setting not received, use Iowa City altimeter setting: increase DA to 1126 feet; increase all MDA 80 feet, increase S-LOC Cat C and D visibility to RVR 5000, and Circling Cat C and D visibility ¼ SM.
 #RVR 1800 authorized with use of FD or HUD to DA (NA when using Iowa City altimeter setting).

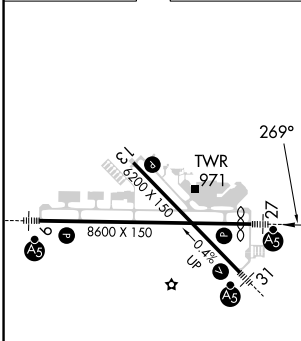
MALSR


MISSED APPROACH: Climb to 2900 direct CID VOR/DME and hold, continue climb-in-hold to 2900.

ATIS 124.15	CEDAR RAPIDS APP CON* 119.7 266.8	CEDAR RAPIDS TOWER* 118.7 (CTAF) 266.8	GND CON 121.6	CLNC DEL 125.45	UNICOM 122.95
-----------------------	---	--	-------------------------	---------------------------	-------------------------



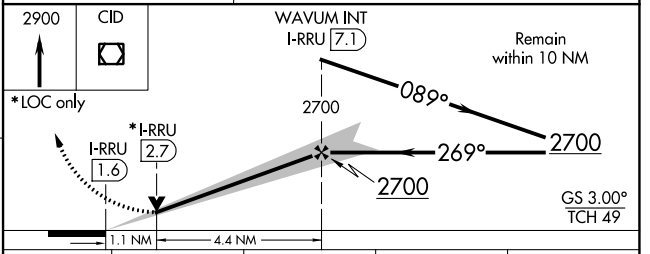
ELEV 869	D	TDZE 862
-----------------	----------	-----------------



MIRL Rwy 13-31 **1**
 HIRL Rwy 9-27 **1**
 REIL Rwy 13

FAF to MAP 5.5 NM

Knots	60	90	120	150	180
Min:Sec	5:30	3:40	2:45	2:12	1:50



NC-3, 26 DEC 2024 to 23 JAN 2025

NC-3, 26 DEC 2024 to 23 JAN 2025