


LOC I-CID 109.3	APP CRS 089°	Rwy Idg TDZE Apt Elev	8175 857 869
---------------------------	------------------------	-----------------------------	---

ILS or LOC RWY 9

THE EASTERN IOWA (CID)

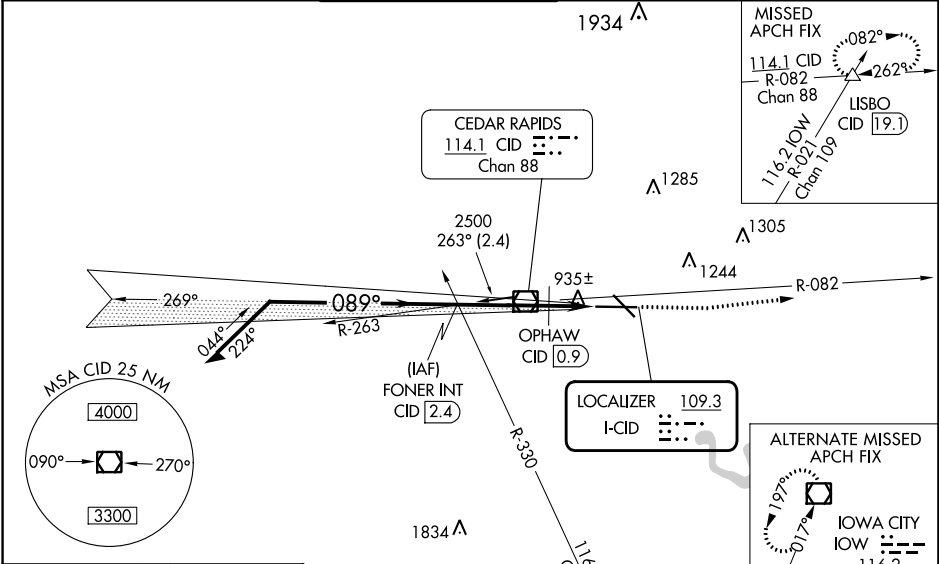
⚠ When local altimeter setting not received, use Iowa City altimeter setting and increase all DA 64 feet and all MDA 80 feet; increase S-LOC Cat D visibility to RVR 6000. OPHAW fix minimums: increase S-LOC Cat C visibility to RVR 4000 and Cat D to RVR 6000. When using Iowa City altimeter setting, for inop MALSR, increase S-ILS 9 all Cats visibility to RVR 5000. Autopilot coupled approach NA below 1100 MSL.
RVR 1800 authorized with use of FD or HUD to DA (NA when using Iowa City altimeter setting).

MALSR

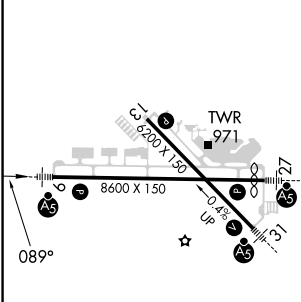


MISSED APPROACH: Climb to 1400 then climb to 2700 via CID VOR/DME R-082 to LISBO/CID VOR/DME 19.1 DME and hold.

ATIS 124.15	CEDAR RAPIDS APP CON* 119.7 266.8	CEDAR RAPIDS TOWER* 118.7 (CTAF) 266.8	GND CON 121.6	CLNC DEL 125.45	UNICOM 122.95
-----------------------	---	--	-------------------------	---------------------------	-------------------------



ELEV 869	D	TDZE 857
----------	----------	----------



* 1440 when using Iowa City altimeter setting.

Remain within 10 NM

2500 089° 2500 VOR/DME

OPHAW CID 0.9

CID 2.5

* 1360

3.3 NM 1.7 NM

1400 2700 LISBO

↑ CID R-082

* LOC only

GS 3.00° TCH 49 VGSi and ILS glidepath not coincident (VGSi Angle 3.00/TCH 60).

CATEGORY	A	B	C	D
S-ILS 9#	1057/24 200 (200-½)			
S-LOC 9	1360/24 503 (500-½)		1360/50 503 (500-1)	
OPHAW FIX MINIMUMS				
S-LOC 9	1220/24 363 (400-½)			1220/40 363 (400-¾)

NC-3, 26 DEC 2024 to 23 JAN 2025

NC-3, 26 DEC 2024 to 23 JAN 2025