

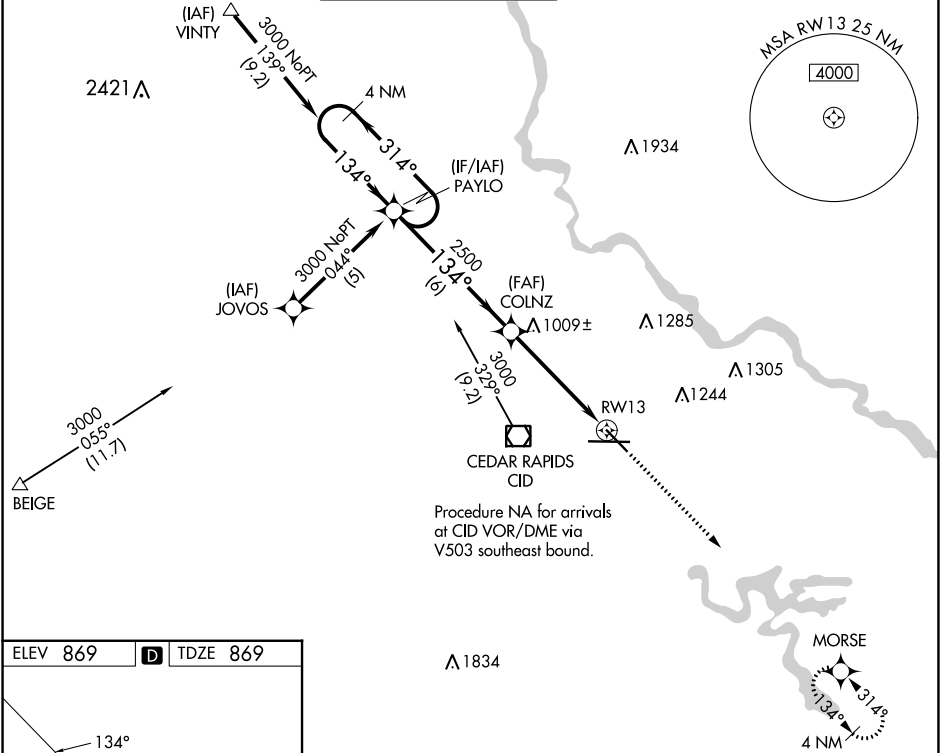
WAAS CH <b>86201</b> <b>W13A</b>	APP CRS <b>134°</b>	Rwy ldg TDZE Apt Elev	<b>6200</b> <b>869</b> <b>869</b>
--	------------------------	-----------------------------	---

# RNAV (GPS) RWY 13

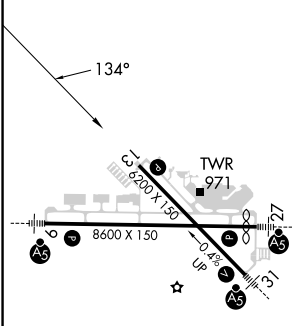
THE EASTERN IOWA (CID)

RNP APCH.	MISSED APPROACH: Climb to 3000 direct MORSE and hold.				
Baro-VNAV NA below -16°C (4°F).					

ATIS <b>124.15</b>	CEDAR RAPIDS APP CON * <b>119.7 266.8</b>	CEDAR RAPIDS TOWER * <b>118.7 (CTAF) 266.8</b>	GND CON <b>121.6</b>	CLNC DEL <b>125.45</b>	UNICOM <b>122.95</b>
-----------------------	--	---	-------------------------	---------------------------	-------------------------



ELEV 869	<b>D</b>	TDZE 869
----------	----------	----------



4 NM Holding Pattern		VGSI and descent angles not coincident (VGSI Angle 3.00/TCH 51).		3000	MORSE
3000 ← 314°		134°		↑	✦
GP 3.00° TCH 40		2500		*LNNAV only.	
				*1 NM to RW13	
				RW13	
				1 NM	

CATEGORY	A	B	C	D
LPV DA	1120-1 251 (300-1)			
LNNAV/VNAV DA	1200-1¼ 331 (400-1¼)			
LNNAV MDA	1260-1 391 (400-1)			1260-1¼ 391 (400-1¼)

MIRL Rwy 13-31 **I**  
 HIRL Rwy 9-27 **I**  
 REIL Rwy 13

NC-3, 26 DEC 2024 to 23 JAN 2025

NC-3, 26 DEC 2024 to 23 JAN 2025