

LOC/DME I-MFR 110.3 Chan 40	APP CRS 323°	Rwy Idg TDZE Apt Elev 1335	N/A N/A 1335
---	------------------------	--	---

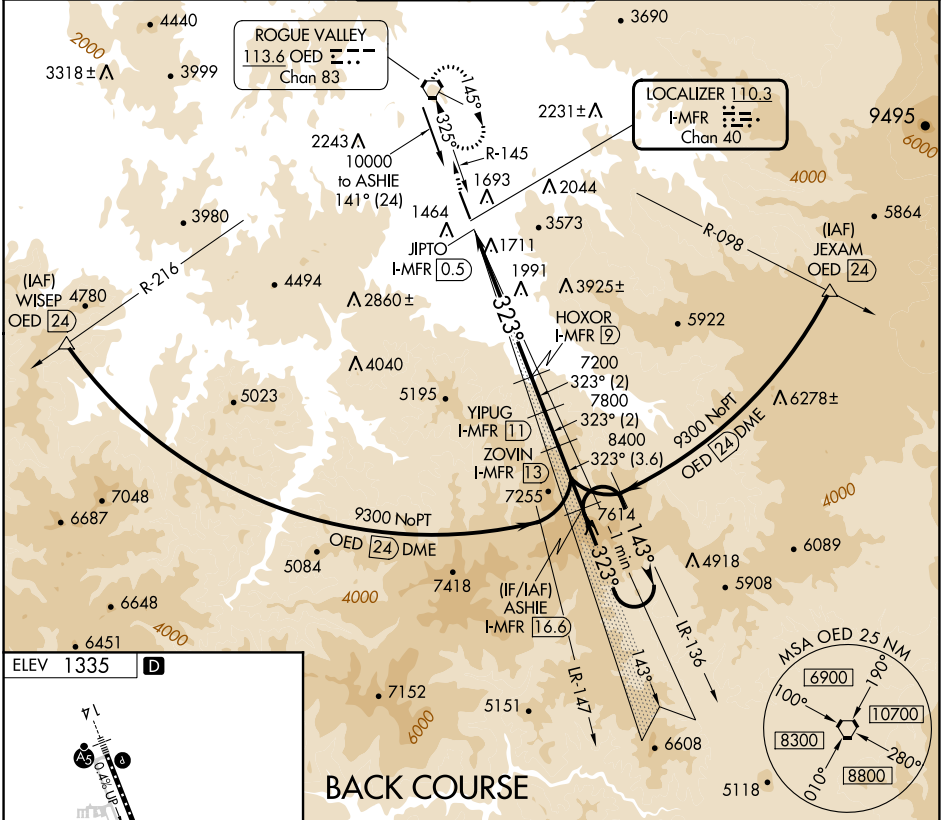
LOC/DME BC-B

ROGUE VALLEY INTL/MEDFORD (MFR)

Visibility reduction by helicopters NA. Circling NA for Cats C and D northeast of Rwy 14-32.

MISSED APPROACH: Climb to 7600 direct OED VORTAC and hold, continue climb-in-hold to 7600.

ATIS 127.25	CASCADE APP CON * 124.3 379.9	MEDFORD TOWER * 119.4 (CTAF) 257.8	GND CON 121.8	UNICOM 122.95
-----------------------	---	--	-------------------------	-------------------------



NW-1, 26 DEC 2024 to 23 JAN 2025

NW-1, 26 DEC 2024 to 23 JAN 2025

ELEV 1335 **D**

CL Rwy 14-32 **1**
 TDZ/CL Rwy 14 **1**
 REIL Rwy 32 **1**
 HIRL Rwy 14-32 **1**

BACK COURSE

7600 OED	VSGI and descent angles not coincident (VSGI Angle 3.00/TCH 50).	ASHIE I-MFR 16.6	One Minute Holding Pattern
Disregard GS indications.	HOXOR I-MFR 9	YIPUG I-MFR 13	ZOVIN I-MFR 16.6
JIPTO I-MFR 0.5	7200	7800	9300
5.98° TCH 45	323°	143°	323°
0.7	8.5 NM	2 NM	2 NM
CATEGORY	A	B	C
CIRCLING	3540-1¼ 2205 (2300-1¼)	3540-1½ 2205 (2300-1½)	3540-3 2205 (2300-3)

Use I-MFR DME when on the localizer course.