

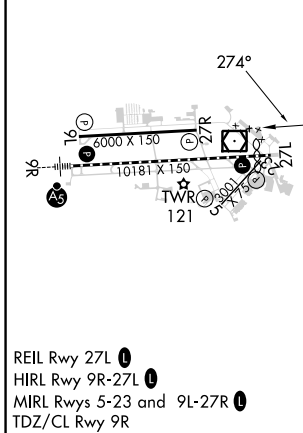
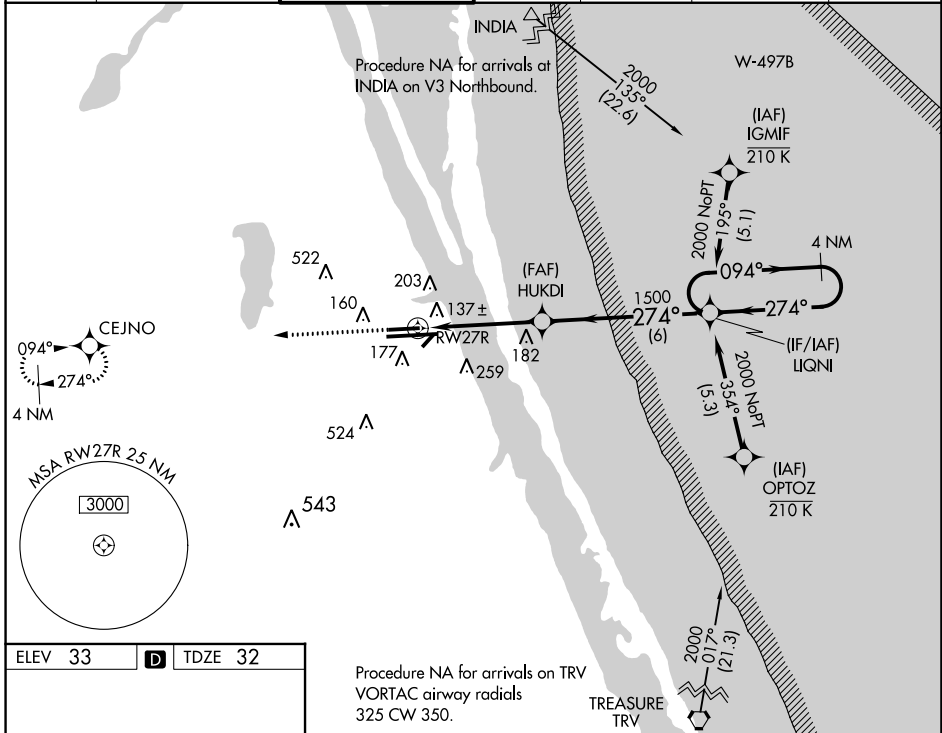
WAAS CH 50101 W27A	APP CRS 274°	Rwy ldg TDZE Apt Elev	6000 32 33
--	------------------------	-----------------------------	---------------------------------------

RNAV (GPS) RWY 27R

MELBOURNE ORLANDO INTL (MLB)

RNP APCH.		MISSED APPROACH: Climb to 2000 direct CEJNO and hold.			
For uncompensated Baro-VNAV systems, LNAV/VNAV NA below -15°C (5°F) or above 54°C (130°F).					

ATIS 132.55	ORLANDO APP CON 132.65 281.425	MELBOURNE TOWER ★ 118.2 (CTAF) 257.8	GND CON 121.9	CLNC DEL 121.9	CLNC DEL 132.65 (When twr closed)	UNICOM 122.95
-----------------------	--	--	-------------------------	--------------------------	--	-------------------------



2000	CEJNO	VGSI and RNAV glidepath not coincident (VGSI Angle 3.00/TCH 40).	4 NM Holding Pattern
↑			
*LNAV only.			
		HUKDI 1500	LIQNI
		*1 NM to RW27R	094° → 2000
		274°	← 274°
		1500	GP 3.00° TCH 55
		1 NM	3.5 NM
		6 NM	
CATEGORY	A	B	C
LPV DA		232-3/4	200 (200-3/4)
LNAV/VNAV DA		443-13/8	411 (500-13/8)
LNAV MDA		400-1	368 (400-1)
CIRCLING	500-1 467 (500-1)	560-1 527 (600-1)	680-13/4 647 (700-13/4)
			880-23/4 847 (900-23/4)

SE-3, 26 DEC 2024 to 23 JAN 2025

SE-3, 26 DEC 2024 to 23 JAN 2025