

VOR/DME	MLB	APP CRS	Rwy Idg	<b>10181</b>
<b>115.85</b>		<b>089°</b>	TDZE	<b>32</b>
Chan	<b>105 (Y)</b>		Apt Elev	<b>33</b>

# VOR RWY 9R

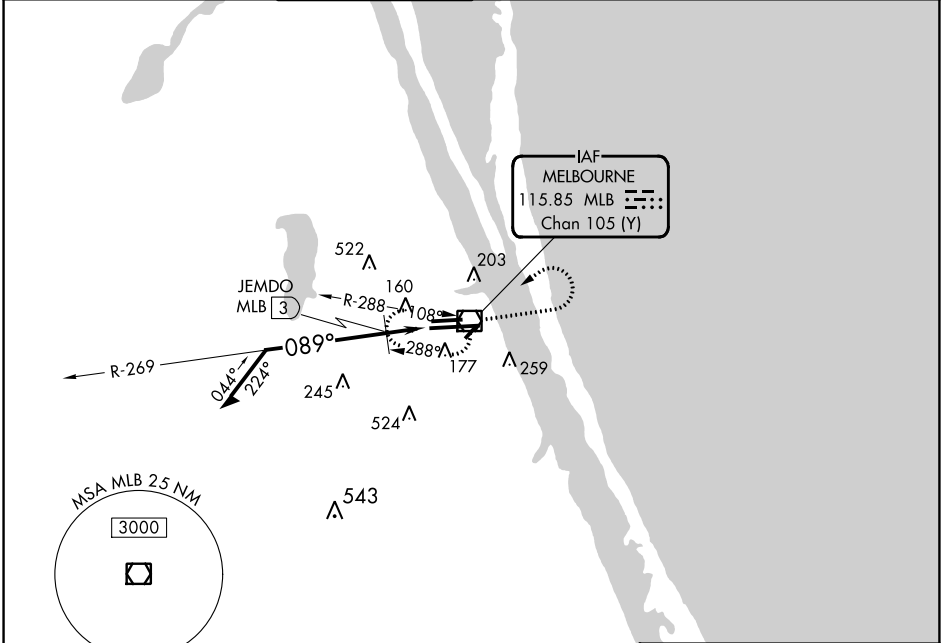
MELBOURNE ORLANDO INTL (MLB)

**▼** JEMDO FIX minimums: For inop MALSRL, **▲** increase S-9R Cats C and D visibility to RVR 6000.



**MISSED APPROACH:** Climb to 1000, then climbing left turn to 2100 direct MLB VOR/DME and hold, continue climb-in-hold to 2100.

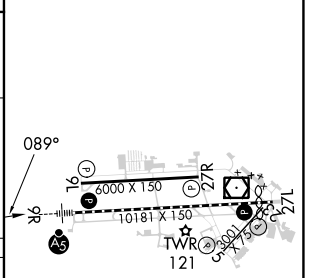
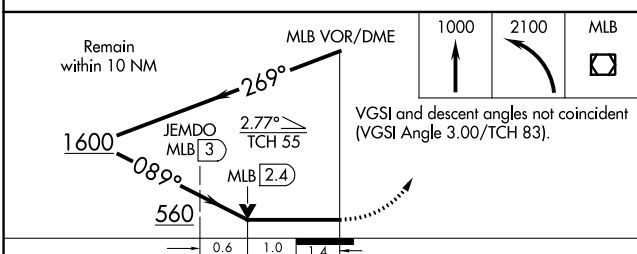
ATIS	ORLANDO APP CON	MELBOURNE TOWER ★	GND CON	CLNC DEL	CLNC DEL	UNICOM
<b>132.55</b>	<b>132.65 281.425</b>	<b>118.2 (CTAF) 257.8</b>	<b>121.9</b>	<b>121.9</b>	<b>132.65</b> (When twr closed)	<b>122.95</b>



SE-3, 26 DEC 2024 to 23 JAN 2025

SE-3, 26 DEC 2024 to 23 JAN 2025

ELEV 33	<b>D</b>	TDZE 32
---------	----------	---------



CATEGORY	A	B	C	D
S-9R	560/24	528 (600-½)	560/55	528 (600-1)
<b>C</b> CIRCLING	560-1	527 (600-1)	680-1¾ 647 (700-1¾)	880-2¾ 847 (900-2¾)
<b>JEMDO FIX MINIMUMS</b>				
S-9R	440/24	408 (500-½)	440/40	408 (500-¾)
<b>C</b> CIRCLING	560-1	527 (600-1)	680-1¾ 647 (700-1¾)	880-2¾ 847 (900-2¾)

- REIL Rwy 27L **0**
- HIRL Rwy 9R-27L **0**
- MIRL Rws 5-23 and 9L-27R **0**
- TDZ/CL Rwy 9R **0**