

# CONDR FOUR ARRIVAL (RNAV)

SE-1, 26 DEC 2024 to 23 JAN 2025

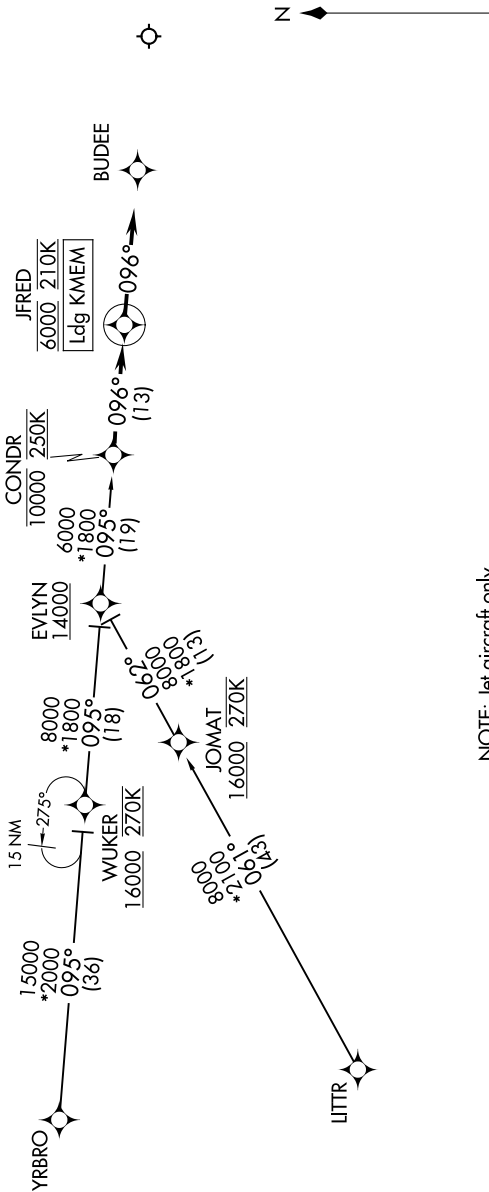
**ARRIVAL ROUTE DESCRIPTION**

EVLYN TRANSITION (EVLYN.CONDR4):  
LITTR TRANSITION (LITTR.CONDR4):  
YRBRO TRANSITION (YRBRO.CONDR4):

From CONDR on track 096° to cross JFRED at 6000 and at 210K, then on track 096°. Expect RADAR vectors to final approach course.

**RNAV 1 - DME/DME/IRU or GPS.**  
 RADAR required.

MEMPHIS APP CON  
 119.1 291.6 (176°-355°)  
 125.8 338.3 (356°-175°)  
 D-ATIS  
 127.75



NOTE: Jet aircraft only.  
 NOTE: Do not file - to be assigned by ATC.

NOTE: Chart not to scale.

# CONDR FOUR ARRIVAL (RNAV)

SE-1, 26 DEC 2024 to 23 JAN 2025