

**TOP ALTITUDE:  
5000**

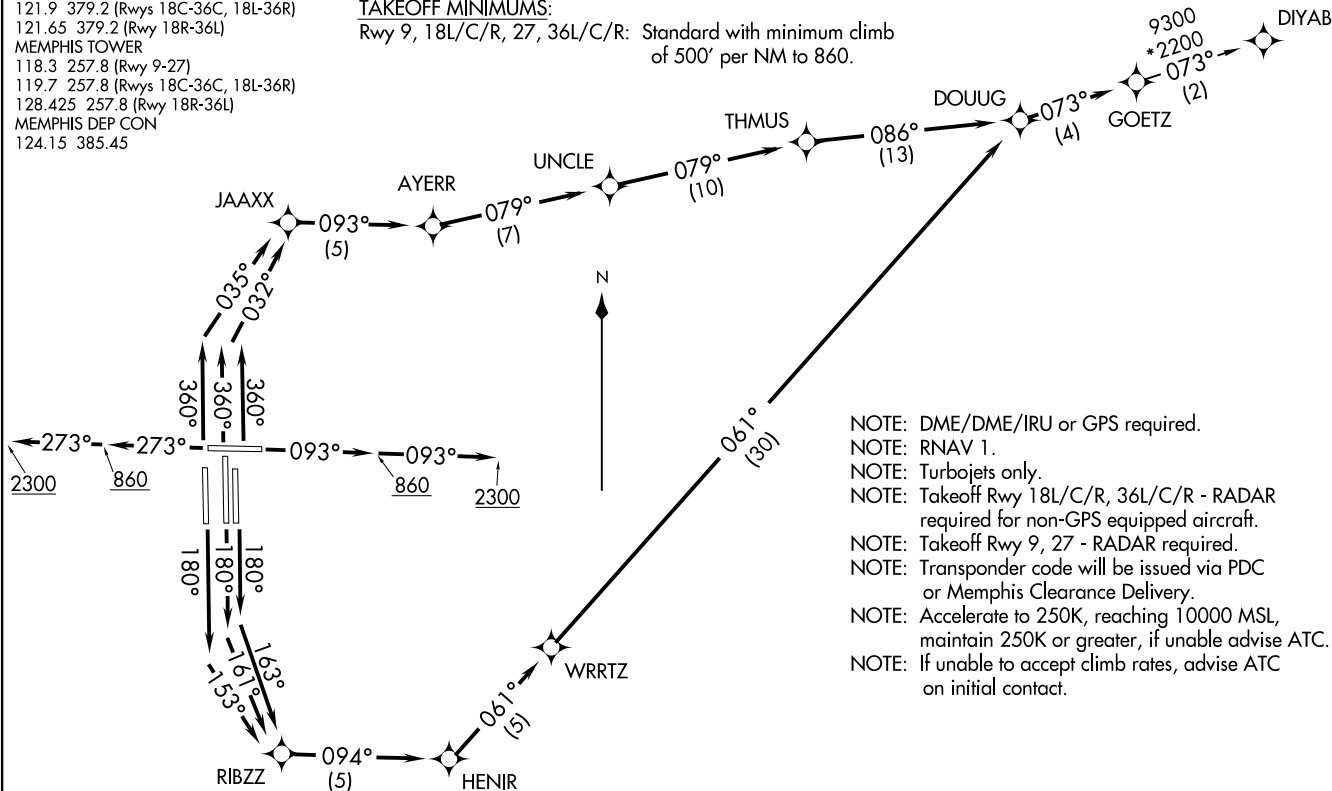
GOETZ SEVEN DEPARTURE (RNAV)  
(GOETZZ.GOEI7Z) 31 DECCO

MEMPHIS, TENNESSEE  
MEMPHIS INTL (MEMI)

D-ATIS 127.75  
CLNC DEL 125.2  
CPDLC  
GND CON  
121.0 379.2 (Rwy 9-27)  
121.9 379.2 (Rwys 18C-36C, 18L-36R)  
121.65 379.2 (Rwy 18R-36L)  
MEMPHIS TOWER  
118.3 257.8 (Rwy 9-27)  
119.7 257.8 (Rwys 18C-36C, 18L-36R)  
128.425 257.8 (Rwy 18R-36L)  
MEMPHIS DEP CON  
124.15 385.45

**TAKEOFF MINIMUMS:**

Rwy 9, 18L/C/R, 27, 36L/C/R: Standard with minimum climb of 500' per NM to 860.



(NARRATIVE ON FOLLOWING PAGE)

NOTE: Chart not to scale.

- NOTE: DME/DME/IRU or GPS required.
- NOTE: RNAV 1.
- NOTE: Turbojets only.
- NOTE: Takeoff Rwy 18L/C/R, 36L/C/R - RADAR required for non-GPS equipped aircraft.
- NOTE: Takeoff Rwy 9, 27 - RADAR required.
- NOTE: Transponder code will be issued via PDC or Memphis Clearance Delivery.
- NOTE: Accelerate to 250K, reaching 10000 MSL, maintain 250K or greater, if unable advise ATC.
- NOTE: If unable to accept climb rates, advise ATC on initial contact.

(GOETZZ.GOEI7Z) 20366  
GOETZ SEVEN DEPARTURE (RNAV)

AL-253 (FAA)

MEMPHIS INTL (MEMI)  
MEMPHIS, TENNESSEE

# GOETZ SEVEN DEPARTURE (RNAV)



## DEPARTURE ROUTE DESCRIPTION

TAKEOFF RUNWAY 9: Climb on heading 093° to 860, then continue climb to 2300 on heading 093° or as assigned by ATC, for RADAR vectors to DOUUG, then on depicted route to GOETZ, thence . . . .

TAKEOFF RUNWAY 18C: Climb on heading 180° to intercept course 161° to RIBZZ, then on depicted route to GOETZ, thence . . . .

TAKEOFF RUNWAY 18L: Climb on heading 180° to intercept course 163° to RIBZZ, then on depicted route to GOETZ, thence . . . .

TAKEOFF RUNWAY 18R: Climb on heading 180° to intercept course 153° to RIBZZ, then on depicted route to GOETZ, thence . . . .

TAKEOFF RUNWAY 27: Climb on heading 273° to 860, then continue climb to 2300 on heading 273° or as assigned by ATC, for RADAR vectors to DOUUG, then on depicted route to GOETZ, thence . . . .

TAKEOFF RUNWAY 36L: Climb on heading 360° to intercept course 035° to JAAXX, then on depicted route to GOETZ, thence . . . .

TAKEOFF RUNWAYS 36C/R: Climb on heading 360° to intercept course 032° to JAAXX, then on depicted route to GOETZ, thence . . . .

. . . . maintain 5000. Expect clearance to filed altitude within ten (10) minutes after departure.

DIYAB TRANSITION (GOETZ7.DIYAB)

SE-1, 26 DEC 2024 to 23 JAN 2025

SE-1, 26 DEC 2024 to 23 JAN 2025