

LOC/DME I-EXS <b>111.15</b>	APP CRS <b>180°</b>	Rwy Idg TDZE Apt Elev	<b>9000</b> <b>301</b> <b>341</b>
Chan <b>48(Y)</b>			

# ILS or LOC RWY 18L

MEMPHIS INTL (MEM)

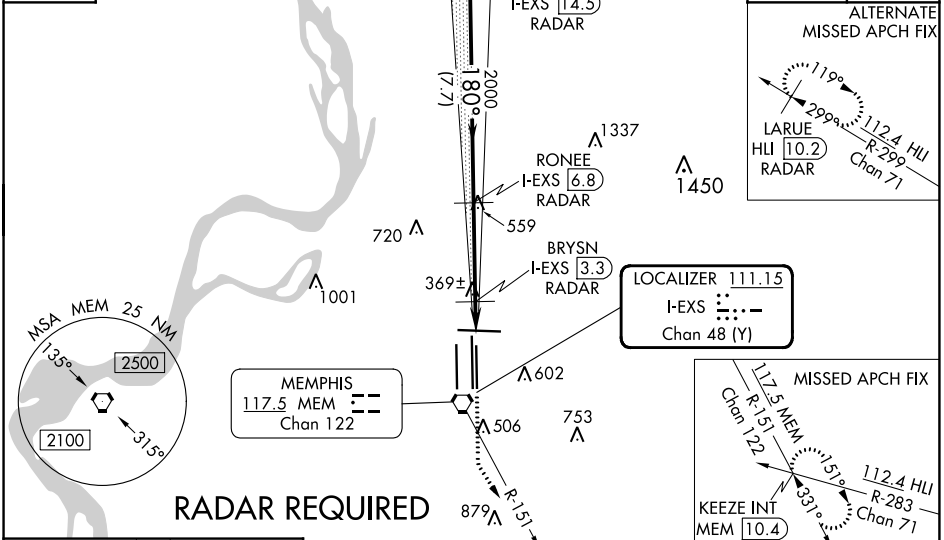
**Simultaneous approach authorized. DME or RADAR required.** For inop ALS, increase S-ILS 18L Cat E visibility to RVR 4000, S-LOC 18L Cat E visibility to 1 3/4 SM, BRYSN fix minimums, increase S-LOC 18L Cats D and E visibility to RVR 5000.

**MALSR** 

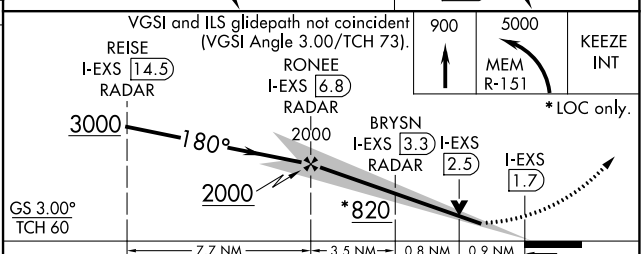
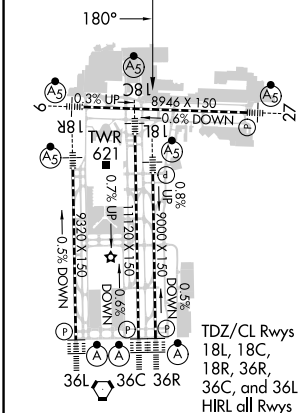
**MISSED APPROACH:** Climb to 900 then climbing left turn to 5000 on MEM VORTAC R-151 to KEEZE INT/MEM 10.4 DME and hold, continue climb-in-hold to 5000.

MEMPHIS APP CON <b>119.1 291.6</b> (176°-355°) <b>125.8 338.3</b> (356°-175°)	MEMPHIS TOWER (Rwy 9-27) <b>118.3 257.8</b> (Rwys 18C-36C, 18L-36R) <b>119.7 257.8</b> (Rwy 18R-36L) <b>128.425 257.8</b>	GND CON (Rwy 9-27) <b>121.0 379.2</b> (Rwys 18C-36C, 18L-36R) <b>121.9 379.2</b> (Rwy 18R-36L) <b>121.65 379.2</b>
---	--	---

D-ATIS <b>127.75</b>	CLNC DEL <b>125.2</b>	CPDLC
-------------------------	--------------------------	-------



ELEV 341	TDZE 301
----------	----------



CATEGORY	A	B	C	D	E
S-ILS 18L	501/18 200 (200-1/2)				501/24 200 (200-1/2)
S-LOC 18L	820/24	519 (500-1/2)	820/50 519 (500-1)	820/60	519 (500-1/4)
<b>CIRCLING</b>	940-1	599 (600-1)	940-1 1/2 599 (600-1 1/2)	1020-2 1/4 679 (700-2 1/4)	1140-2 3/4 799 (800-2 3/4)
<b>BRYSN FIX MINIMUMS</b>					
S-LOC 18L	620/24	319 (300-1/2)	620/40	319 (300-3/4)	
<b>CIRCLING</b>	940-1	599 (600-1)	940-1 1/2 599 (600-1 1/2)	1020-2 1/4 679 (700-2 1/4)	1140-2 3/4 799 (800-2 3/4)

FAF to MAP 5.2 NM					
Knots	60	90	120	150	180
Min:Sec	5:12	3:28	2:36	2:05	1:44

SE-1, 26 DEC 2024 to 23 JAN 2025

SE-1, 26 DEC 2024 to 23 JAN 2025