


# RNAV (RNP) Y RWY 18L

MEMPHIS INTL (MEM)

|             |          |             |
|-------------|----------|-------------|
| APP CRS     | Rwy Idg  | <b>9000</b> |
| <b>180°</b> | TDZE     | <b>301</b>  |
|             | Apt Elev | <b>341</b>  |

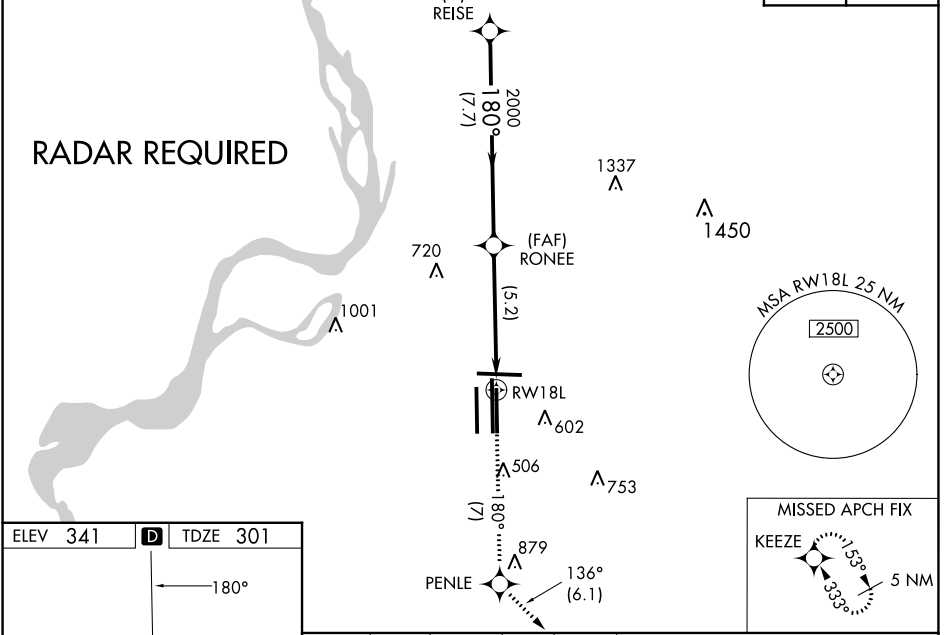
**▼** For uncompensated Baro-VNAV systems, procedure NA below -9°C (16°F) or above 48°C (118 °F). GPS required. Simultaneous approach authorized. For inop ALS, increase RNP 0.30 \* all Cats visibility to RVR 6000 and RNP 0.30 all Cats visibility to 1¼ SM.

**MALSR**  
  
**MISSED APPROACH:** Climb to 5000 on track 180° to PENLE and on track 136° to KEEZE and hold, continue climb-in-hold to 5000. \*Missed approach requires minimum climb of 400 feet per NM to 1000.

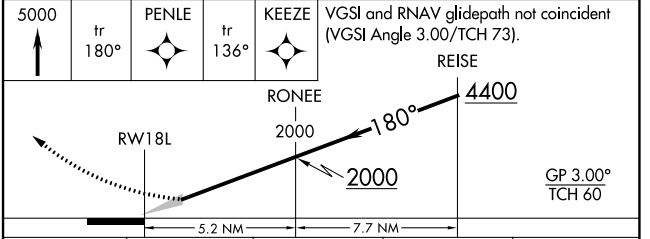
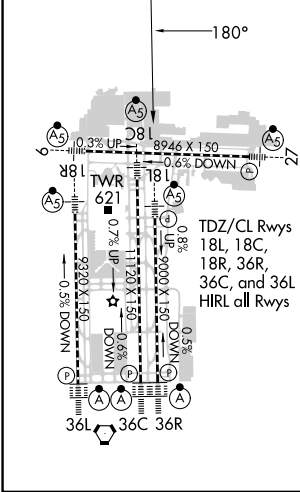
|                                |  |  |
|--------------------------------|--|--|
| MEMPHIS APP CON                | MEMPHIS TOWER                              | GND CON                                    |
| <b>119.1 291.6</b> (176°-355°) | <b>118.3 257.8</b> (Rwy 9-27)              | <b>121.0 379.2</b> (Rwy 9-27)              |
| <b>125.8 338.3</b> (356°-175°) | <b>119.7 257.8</b> (Rwys 18C-36C, 18L-36R) | <b>121.9 379.2</b> (Rwys 18C-36C, 18L-36R) |
|                                | <b>128.425 257.8</b> (Rwy 18R-36L)         | <b>121.65 379.2</b> (Rwy 18R-36L)          |

D-ATIS  
**127.75**

CLNC DEL **125.2** CPDLC



|          |          |          |
|----------|----------|----------|
| ELEV 341 | <b>D</b> | TDZE 301 |
|----------|----------|----------|



| CATEGORY     | A | B      | C            | D |
|--------------|---|--------|--------------|---|
| RNP 0.30 DA* |   | 698/50 | 397 (400-1)  |   |
| RNP 0.30 DA  |   | 791/60 | 490 (500-1¼) |   |

## AUTHORIZATION REQUIRED

SE-1, 26 DEC 2024 to 23 JAN 2025

SE-1, 26 DEC 2024 to 23 JAN 2025