


APP CRS 180°	Rwy Idg 9320
	TDZE 295
	Apt Elev 341

RNAV (RNP) Y RWY 18R

MEMPHIS INTL (MEM)

▼ For uncompensated Baro-VNAV systems, procedure NA below -9°C (16°F) or above 48°C (118°F). Simultaneous approach authorized. GPS required. Use of FD or AP required during simultaneous operations. For inop ALS, increase RNP 0.19* all Cats visibility to RVR 6000 and RNP 0.30 all Cats visibility to 1 3/4 SM.

MALSR

MISSED APPROACH: Climb to 5000 on track 180° to JAGUR and on track 223° to JEPOB and hold. *Missed approach requires minimum climb of 425 feet per NM to 1000.

MEMPHIS APP CON

119.1 291.6	(176°-355°)
125.8 338.3	(356°-175°)

MEMPHIS TOWER

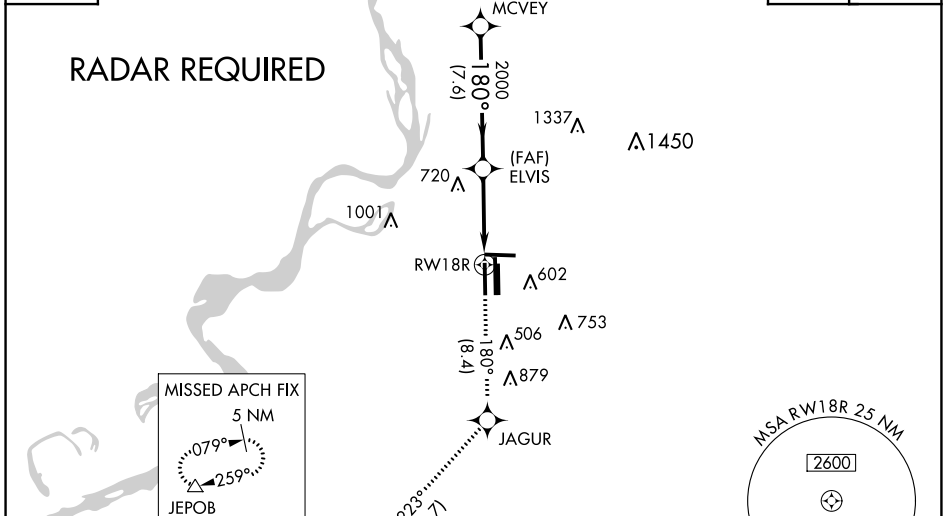
(Rwy 9-27)	118.3 257.8
(Rwys 18C-36C, 18L-36R)	119.7 257.8
(Rwy 18R-36L)	128.425 257.8

GND CON

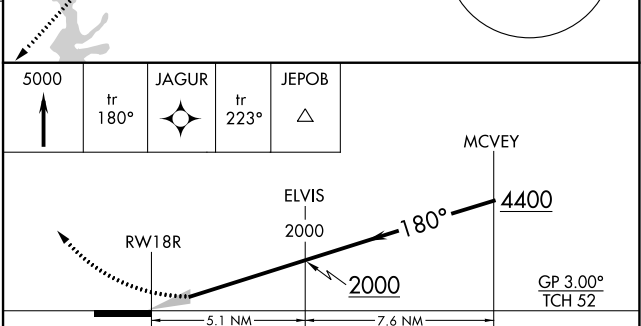
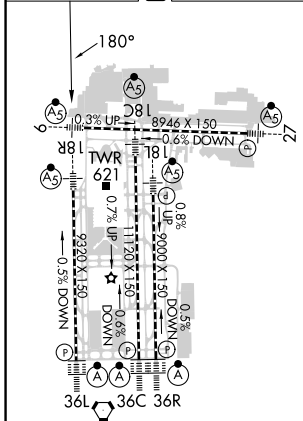
(Rwy 9-27)	121.0 379.2
(Rwys 18C-36C, 18L-36R)	121.9 379.2
(Rwy 18R-36L)	121.65 379.2

D-ATIS
127.75

CLNC DEL 125.2	CPDLC
--------------------------	-------



ELEV 341	D	TDZE 295
-----------------	----------	-----------------



CATEGORY	A	B	C	D
RNP 0.19 DA *		645/40	350 (400-3/4)	
RNP 0.30 DA		771/60	476 (500-1 1/4)	

MEMPHIS, TENNESSEE
 Orig-E 29MAR18

35°03'N-89°59'W

MEMPHIS INTL (MEM)
RNAV (RNP) Y RWY 18R

AUTHORIZATION REQUIRED

SE-1, 26 DEC 2024 to 23 JAN 2025

SE-1, 26 DEC 2024 to 23 JAN 2025