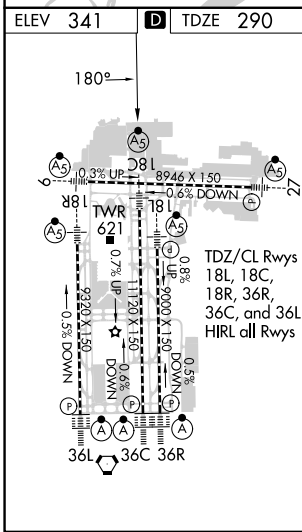
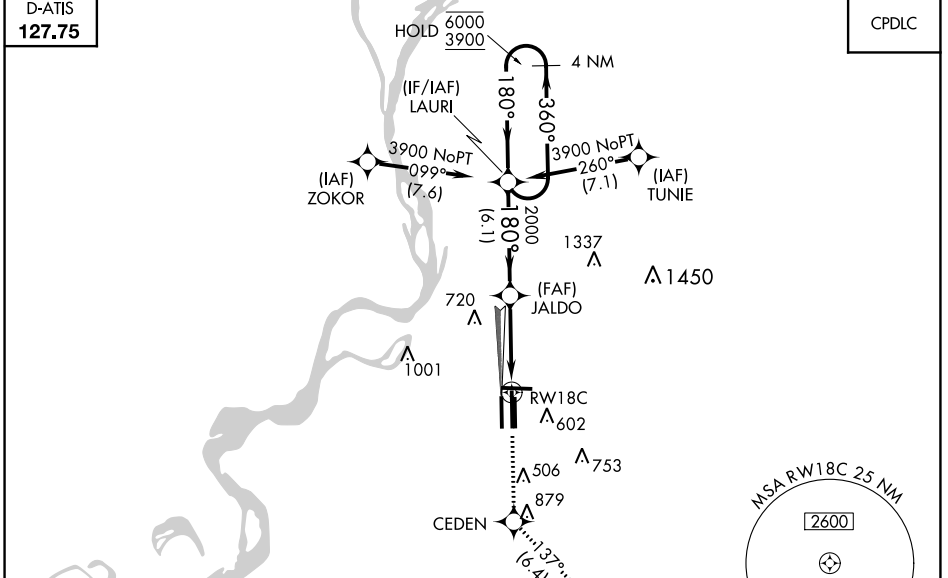


WAAS CH 97507	APP CRS 180°	Rwy Idg TDZE Apt Elev	1120 290 341
-------------------------	------------------------	-----------------------------	---

RNAV (GPS) Z RWY 18C

MEMPHIS INTL (MEM)

RNP APCH - GPS.		MALSR	MISSED APPROACH: Climb to 5000 direct CEDEN and on track 137° to KEEZE and hold, continue climb-in-hold to 5000.
<p>Simultaneous approach authorized. For uncompensated Baro-VNAV systems, LNAV/VNAV NA below -15°C or above 54°C. Use of FD or AP required during simultaneous operations. LNAV procedure NA during simultaneous operations. For Inop ALS, increase LPV all Cats visibility to RVR 5500 and LNAV/VNAV all Cats visibility to 1½ SM.</p>			
MEMPHIS APP CON	MEMPHIS TOWER	GND CON	CLNC DEL
119.1 291.6 (176°-355°)	(Rwy 9-27) 118.3 257.8	(Rwy 9-27) 121.0 379.2	125.2
125.8 338.3 (356°-175°)	(Rwys 18C-36C, 18L-36R) 119.7 257.8	(Rwys 18C-36C, 18L-36R) 121.9 379.2	
	(Rwy 18R-36L) 128.425 257.8	(Rwy 18R-36L) 121.65 379.2	



ELEV 341	TDZE 290				
5000	CEDEN	tr 137°	KEEZE	4 NM Holding Pattern	
		JALDO	2000	6000	3900
		RW18C	1.7 NM to RW18C	180°	360°
		1.7 NM	3.5 NM	6.1 NM	GP 3.00° TCH 54
CATEGORY	A	B	C	D	
LPV DA	665/35		375 (400-½)		
LNAV/VNAV DA	782/50		492 (500-1)		
LNAV MDA	880/24	590 (600-½)	880-1¼	590 (600-1¼)	
CIRCLING	940-1	599 (600-1)	940-1¾	1020-2 ¼	679 (700-2¼)

SE-1, 26 DEC 2024 to 23 JAN 2025

SE-1, 26 DEC 2024 to 23 JAN 2025