


WAAS CH 53307 W18B	APP CRS 180°	Rwy Idg TDZE Apt Elev	9000 301 341
--	------------------------	-----------------------------	---

RNAV (GPS) Z RWY 18L

MEMPHIS INTL (MEM)

RNP APCH - GPS.

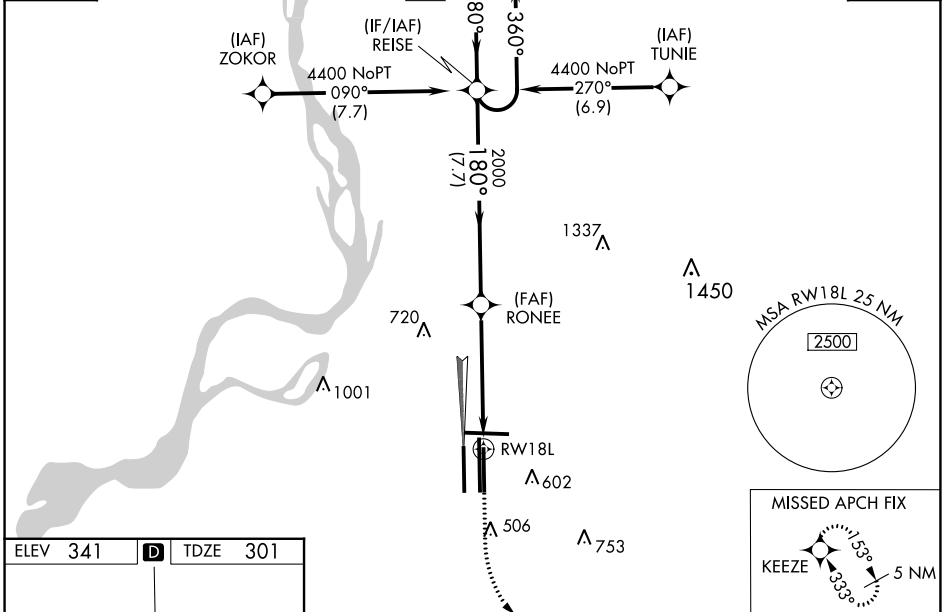
Simultaneous approach authorized. For uncompensated Baro-VNAV systems, LNAV/VNAV NA below -15°C or above 54°C. LNAV procedure NA during simultaneous operations. Use of FD or AP required during simultaneous operations. For inop ALS, increase LNAV/VNAV all Cats visibility to 1½ SM and LNAV Cat C/D visibility to 1½ SM.

MALSR 

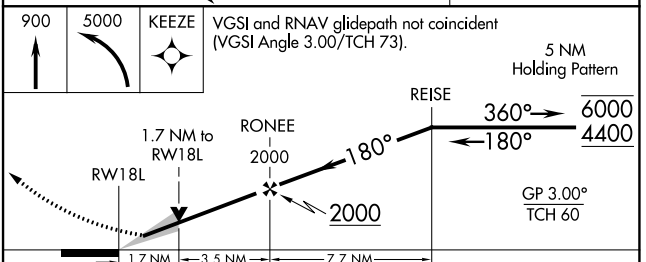
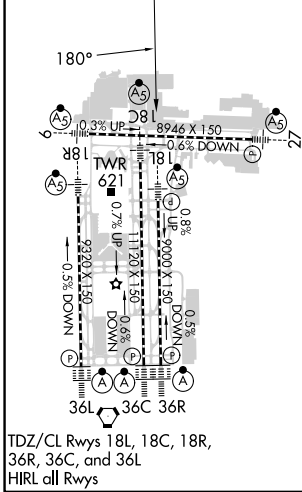
MISSED APPROACH: Climb to 900 then climbing left turn to 5000 direct KEEZE and hold, continue climb-in-hold to 5000.

MEMPHIS APP CON 119.1 291.6 (176°-355°) 125.8 338.3 (356°-175°)	MEMPHIS TOWER 118.3 257.8 (Rwys 18C-36C, 18L-36R) 119.7 257.8 (Rwys 18C-36L) 128.425 257.8 (Rwy 18R-36L)	GND CON 121.0 379.2 (Rwys 9-27) 121.9 379.2 (Rwys 18C-36C, 18L-36R) 121.65 379.2 (Rwy 18R-36L)	CLNC DEL 125.2
---	--	--	--------------------------

D-ATIS 127.75	CPDLC
-------------------------	-------



ELEV 341	D	TDZE 301
----------	----------	----------



CATEGORY	A	B	C	D
LPV DA		557/18	256 (300-½)	
LNAV/VNAV DA		874-1¼	573 (600-1¼)	
LNAV MDA	880/24	579 (600-½)	880-1¼	579 (600-1¼)
C CIRCLING	940-1	599 (600-1)	940-1½ 599 (600-1½)	1020-2¼ 679 (700-2¼)

SE-1, 26 DEC 2024 to 23 JAN 2025

SE-1, 26 DEC 2024 to 23 JAN 2025