

# VANZE THREE ARRIVAL (RNAV)

SE-1, 26 DEC 2024 to 23 JAN 2025

**GRAMM TRANSITION (GRAMM.VANZE3):**  
**TALLO TRANSITION (TALLO.VANZE3):**  
**WASER TRANSITION (WASER.VANZE3):**

**LANDING SOUTH: RUNWAY 18L/18C/18R:** From over VANZE on track 287° to MASHH, cross MASHH at/below 16000 and at/above 14000 at 280K, then on track 286° to HI VORTAC, then on track 303° to LARUE, cross LARUE at/below 12000 and at/above 10000 at 250K, then on track 302° to FLOND, cross FLOND at/below 11000 and at/above 9000, then on track 302° to SUUZE, then on track 360° to MEBEE, cross MEBEE at/below 10000 and at/above 8000 at 210K, then on track 360° to HADSO, cross HADSO at/below 8000 and at/above 6000, then on track 360° to HEXIN, cross HEXIN at 3000, then on track 360°. Expect radar vectors to final approach course.

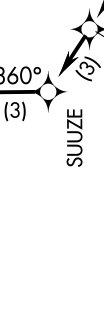
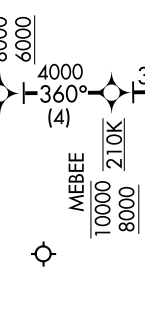
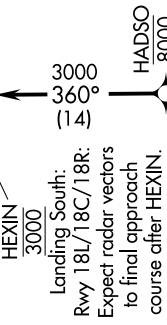
**LANDING NORTH: RUNWAY 36L/36C/36R/9/27:** From over VANZE on track 284° to CHLMR, cross CHLMR at 10000 at 230K, then on track 284°. Expect radar vectors to final approach course.

RNAV 1 - DME/DME/IRU or GPS required.  
 RADAR required.

MEMPHIS APP CON  
 119.1 291.6 (176°-355°)  
 125.8 338.3 (356°-175°)  
 D-ATIS  
 127.75

HEXIN  
 3000

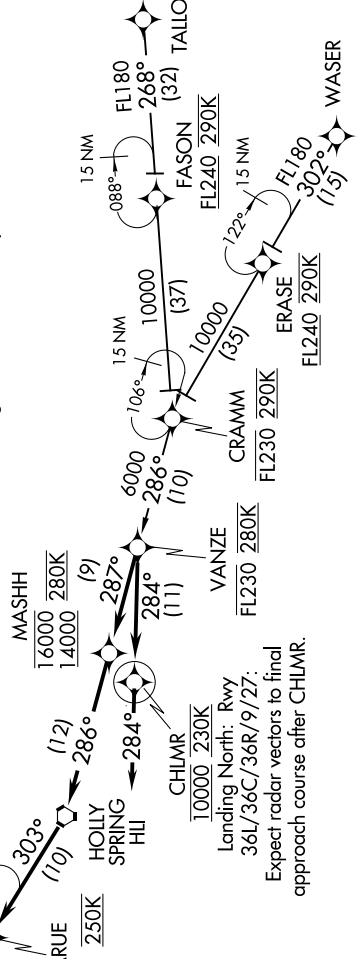
Landing South:  
 Rwy 18L/18C/18R:  
 Expect radar vectors  
 to final approach  
 course after HEXIN.



**NOTE:** Expect to receive landing direction (North/South) and "Descend via" clearance from Memphis Center. Memphis approach will assign landing runway.

NOTE: Chart not to scale.

**NOTE:** Descend via Mach number until transition to 290K.  
**NOTE:** Jet aircraft only.  
**NOTE:** Landing South indicates Rwy 18L/18C/18R.  
 Landing North indicates Rwy 36L/36C/36R/9/27.



SE-1, 26 DEC 2024 to 23 JAN 2025