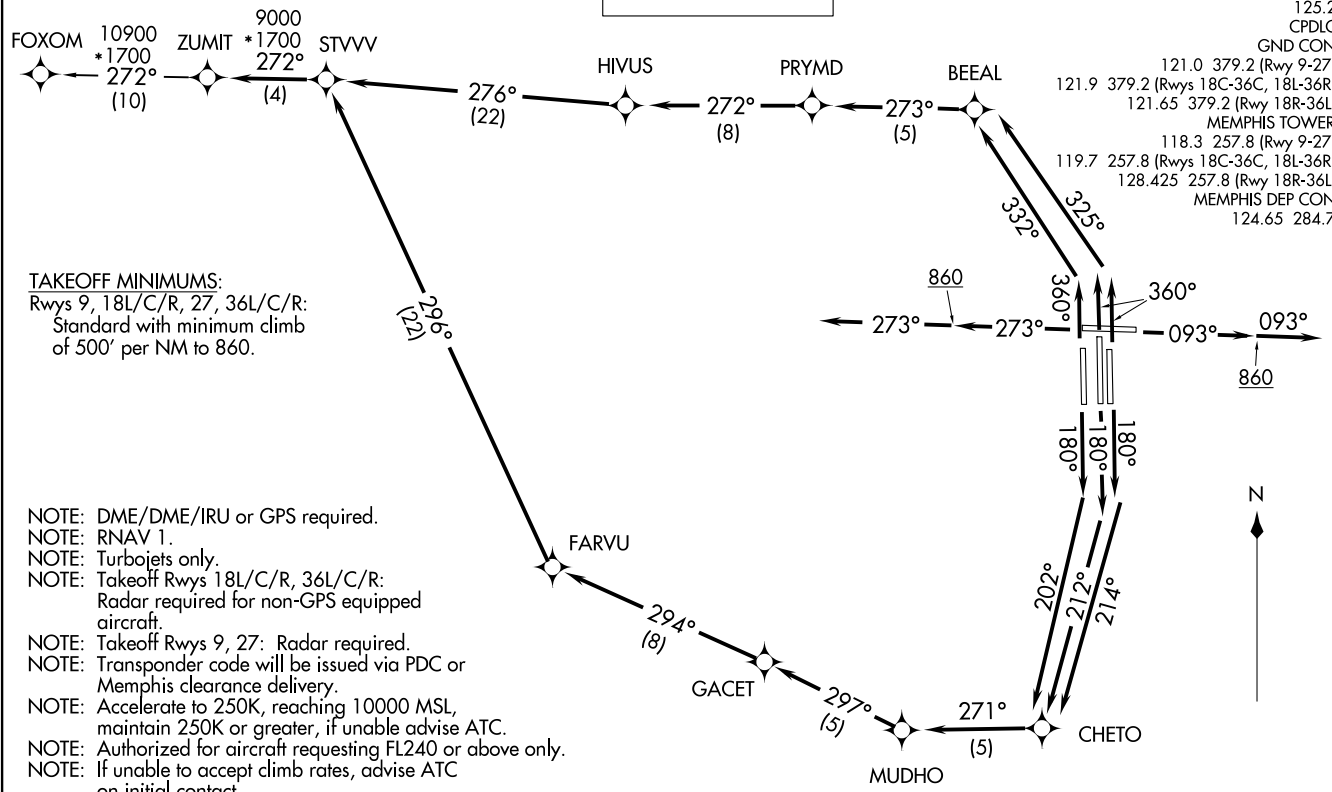


**TOP ALTITUDE:  
5000**

D-ATIS 127.75  
CLNC DEL 125.2  
CPDLC  
GND CON  
121.0 379.2 (Rwy 9-27)  
121.9 379.2 (Rwys 18C-36C, 18L-36R)  
121.65 379.2 (Rwy 18R-36L)  
MEMPHIS TOWER  
118.3 257.8 (Rwy 9-27)  
119.7 257.8 (Rwys 18C-36C, 18L-36R)  
128.425 257.8 (Rwy 18R-36L)  
MEMPHIS DEP CON  
124.65 284.7

(ZUMIT5 ZUMIT) 21224  
AL-253 (FAA)

MEMPHIS INTL (MEM) MEMPHIS, TENNESSEE



**TAKEOFF MINIMUMS:**  
Rwys 9, 18L/C/R, 27, 36L/C/R:  
Standard with minimum climb  
of 500' per NM to 860.

- NOTE: DME/DME/IRU or GPS required.
- NOTE: RNAV 1.
- NOTE: Turbojets only.
- NOTE: Takeoff Rwys 18L/C/R, 36L/C/R:  
Radar required for non-GPS equipped aircraft.
- NOTE: Takeoff Rwys 9, 27: Radar required.
- NOTE: Transponder code will be issued via PDC or Memphis clearance delivery.
- NOTE: Accelerate to 250K, reaching 10000 MSL, maintain 250K or greater, if unable advise ATC.
- NOTE: Authorized for aircraft requesting FL240 or above only.
- NOTE: If unable to accept climb rates, advise ATC on initial contact.

(NARRATIVE ON FOLLOWING PAGE)

NOTE: Chart not to scale.

ZUMIT FIVE DEPARTURE (RNAV)  
(ZUMIT5 ZUMIT) 31DECC20

MEMPHIS, TENNESSEE  
MEMPHIS INTL (MEM)

# ZUMIT FIVE DEPARTURE (RNAV)

## DEPARTURE ROUTE DESCRIPTION



TAKEOFF RUNWAY 9: Climb on heading 093° to 860, then continue climb on heading 093°, expect vectors to STVVV, then on depicted route to ZUMIT, thence....

TAKEOFF RUNWAY 18C: Climb on heading 180° to intercept course 212° to CHETO, then on depicted route to ZUMIT, thence....

TAKEOFF RUNWAY 18L: Climb on heading 180° to intercept course 214° to CHETO, then on depicted route to ZUMIT, thence....

TAKEOFF RUNWAY 18R: Climb on heading 180° to intercept course 202° to CHETO, then on depicted route to ZUMIT, thence....

TAKEOFF RUNWAY 27: Climb on heading 273° to 860, then continue climb on heading 273°, expect vectors to STVVV, then on depicted route to ZUMIT, thence....

TAKEOFF RUNWAY 36L: Climb on heading 360° to intercept course 332° to BEEAL, then on depicted route to ZUMIT, thence....

TAKEOFF RUNWAYS 36C/R: Climb on heading 360° to intercept course 325° to BEEAL, then on depicted route to ZUMIT, thence....

....maintain 5000. Expect clearance to filed altitude within ten (10) minutes after departure.

FOXOM TRANSITION (ZUMIT5.FOXOM):

SE-1, 26 DEC 2024 to 23 JAN 2025

SE-1, 26 DEC 2024 to 23 JAN 2025